

STAUD

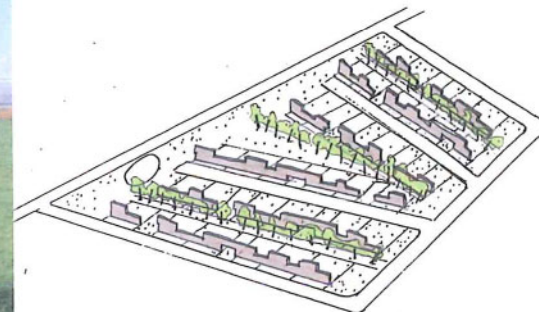
PLATFORM VOOR STRATEGIE THEORIE
ARCHITECTUUR URBANISME EN DIALOOG
AKKERLAAN 23 B-2830 WILLEBROEK
t +32 (0)2 757 12 61 f +32 (0)2 757 07 78

ONTWERPTEAM VOOR STAUD:
RAF DE SAEGER, dr.ingenieur, architect
ANN VOETS, kunsthistoricus, landschapsarchitect
BRUNO DEPRÉ, ir.architect
SASKIA WOUTERS, ir.architect
SARAH VERSTRAETE, architect

OPDRACHT:
REF.: open oproep nr. 521 (OPEN OPROEP VLAAMS BOUWMEESTER)

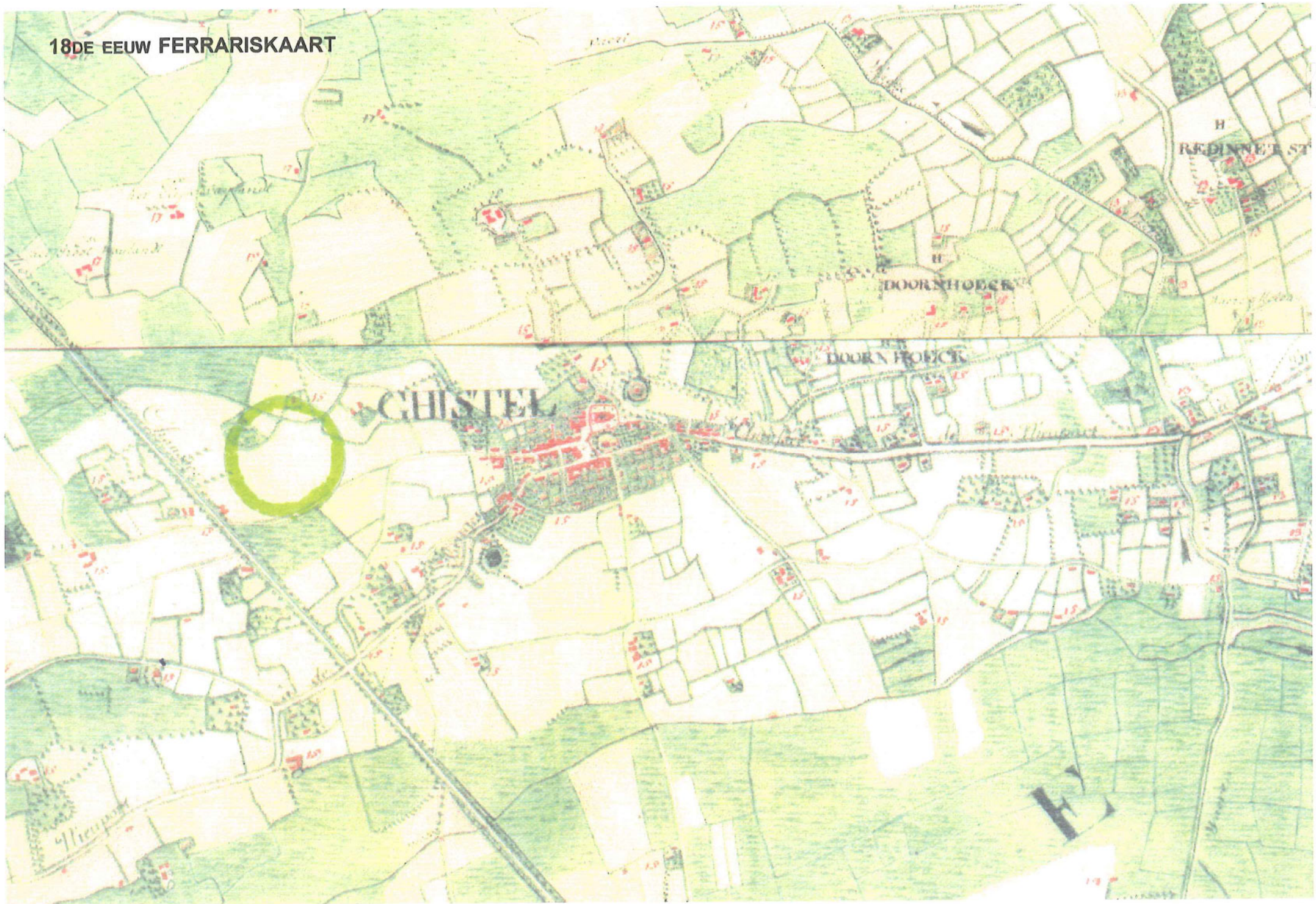
DATUM: 28.01.2004

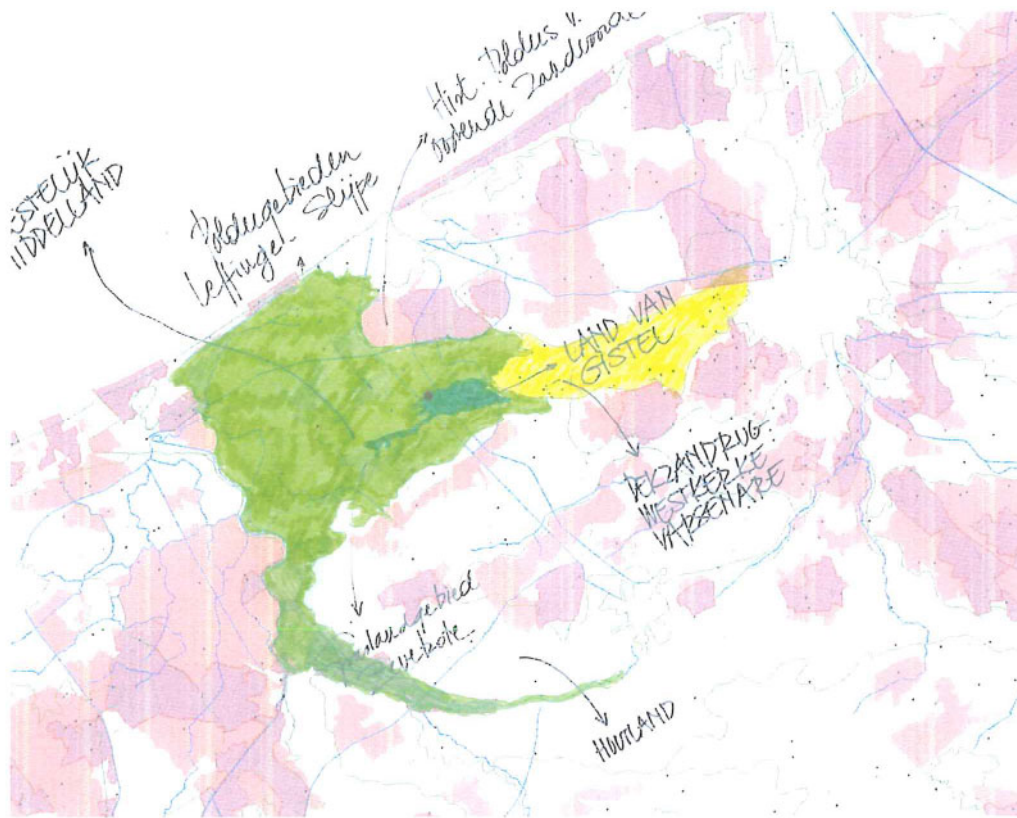
WERKOPDRACHT VOOR HET STEDENBOUWKUNDIG INRICHTINGSPLAN VAN EEN NIEUWE WOONWIJK STEENBAKKER, GISTEL VOOR DE SOCIALE BOUWMAATSCHAPPIJ OLW



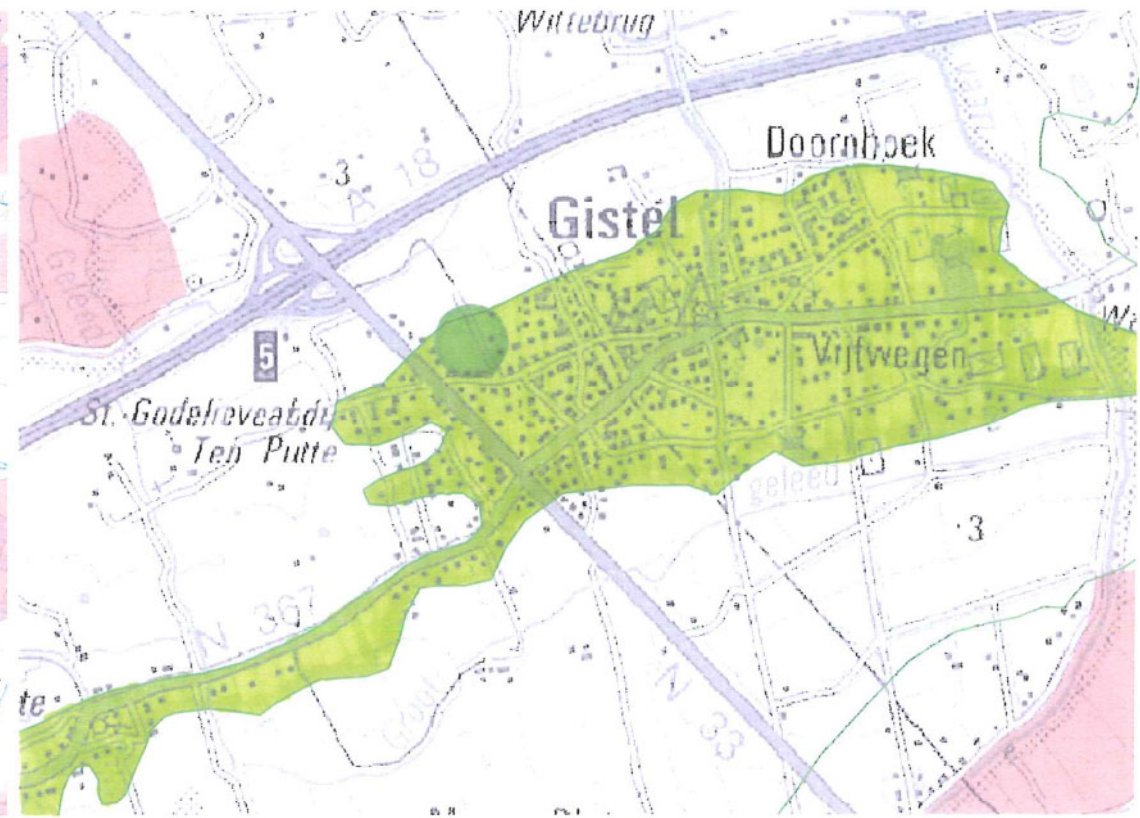
A LANDSCHAP - CONTEXT

18DE EEUW FERRARISKAART





TRADITIONELE LANDSCHAPPEN



LANDSCHAPSATLAS STUDIEGEBIED OP DE GENS VAN HET 'LAND VAN GISTEL' EN 'WESTELIJK MIDDELLANI'



OVERGANG BEBOUWING – LANDSCHAP



OPEN ZICHTEN

GROTE OPEN RUIMTEN

WEINIG LINEAIR GROEN

MOERASSIGE WEIDEN



AKKERLAND



ECOLOGISCHE CORRIDORS TE ASSOCIEREN MET SLOTEN, DIJKEN EN WEGEN





GESLOTEN OPSTELLING VERMIJDEN



LANDSCHAPPELIJKE RELATIES ZOEK



MICRORELIEF MET ZIJN SPECIFIEKE VEGETATIE



MICRORELIEF HERKENNEN

DOORZICHTEN BEHOUDEN



REstant BOOMGAARD BEHOUDEN



DREEF HERWAARDEREN



POEL IN SYSTEEM SCHAKELEN



SLOOT ALS GRENS

SLOOT EN WEG OVERGANG



LINEAIR AFLEESBAAR

GRACHT MET BEGROEIING



INTIMITEIT

LANDSCHAPPELIJKE INTEGRATIE



WILGEN SCHAAL EN KARAKTER



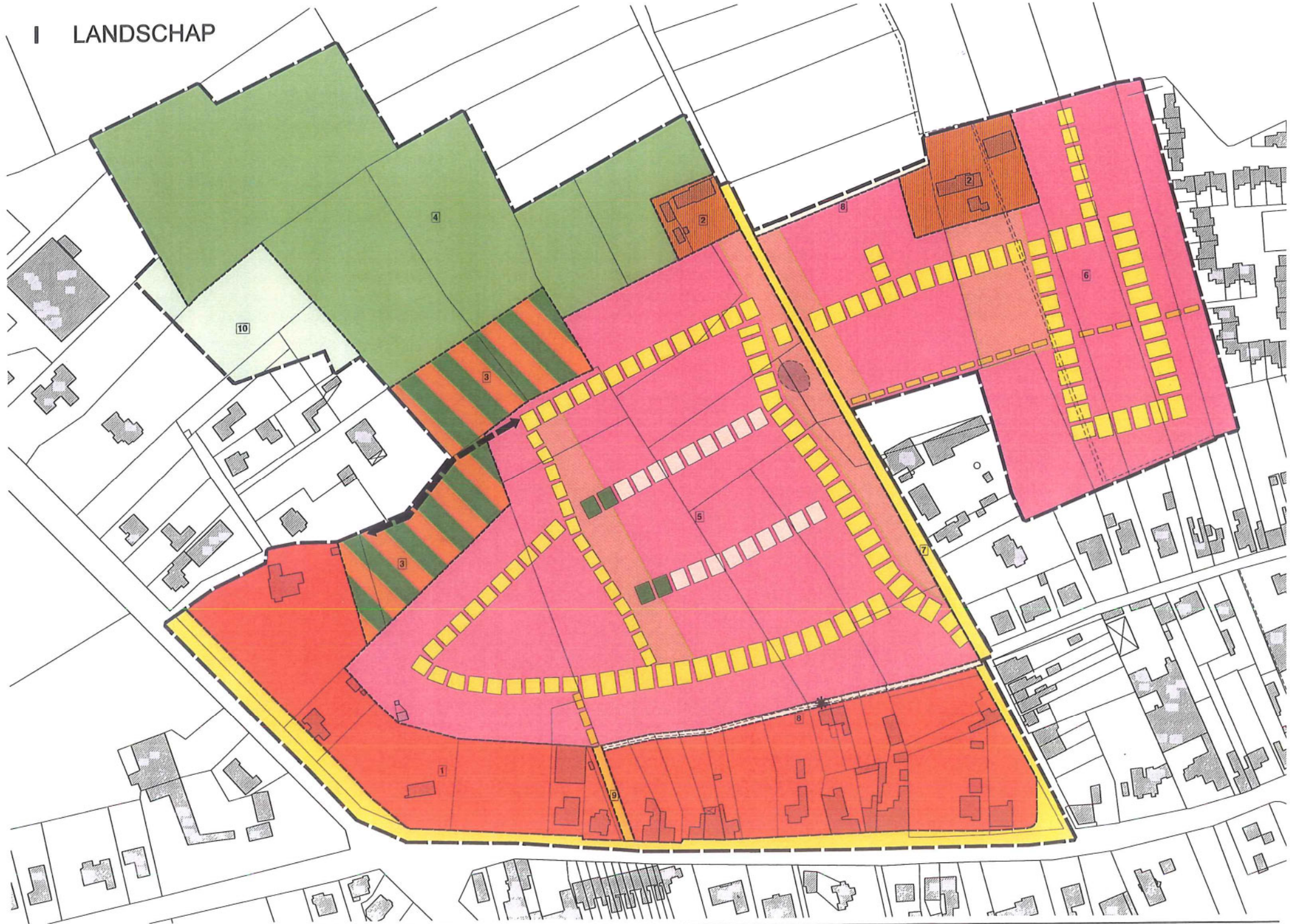
SCHAALGEBONDEN LANDSCHAPPELIJKE ELEMENTEN

B LANDSCHAPARCHITECTUUR

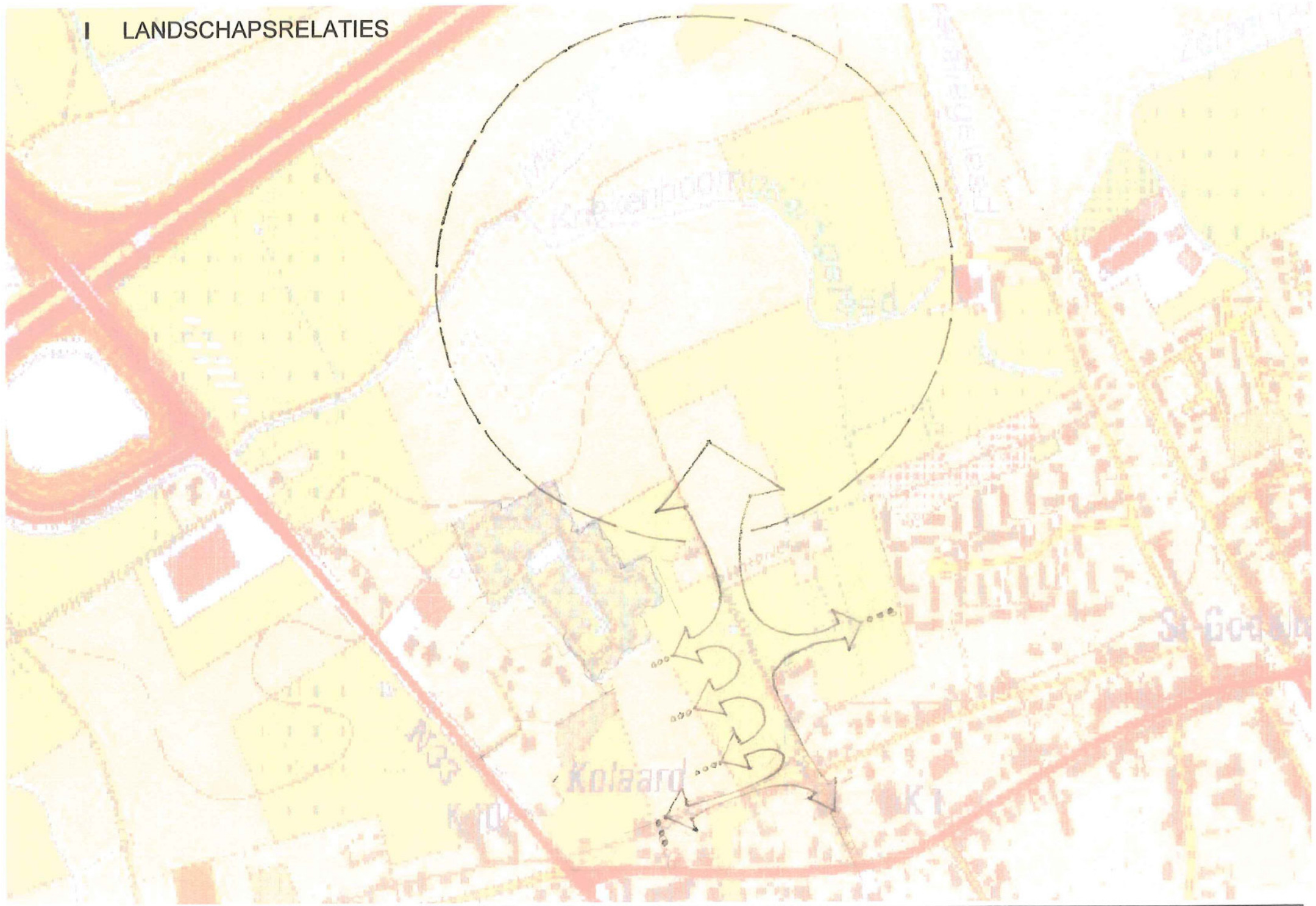
I LANDSCHAP

II LANDSCHAP EN ARCHITECTUUR

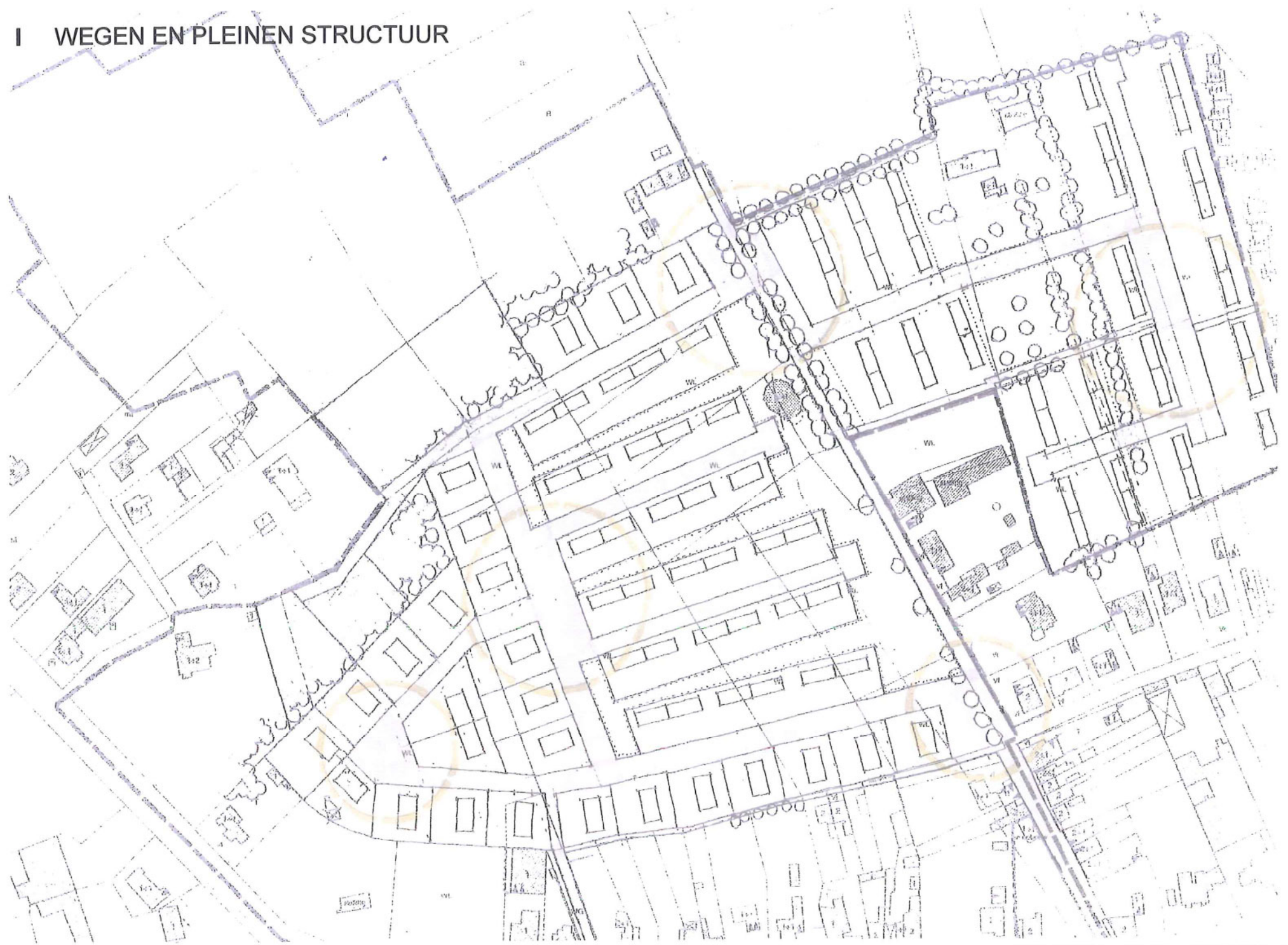
I LANDSCHAP



I LANDSCHAPSRELATIES



I WEGEN EN PLEINEN STRUCTUUR



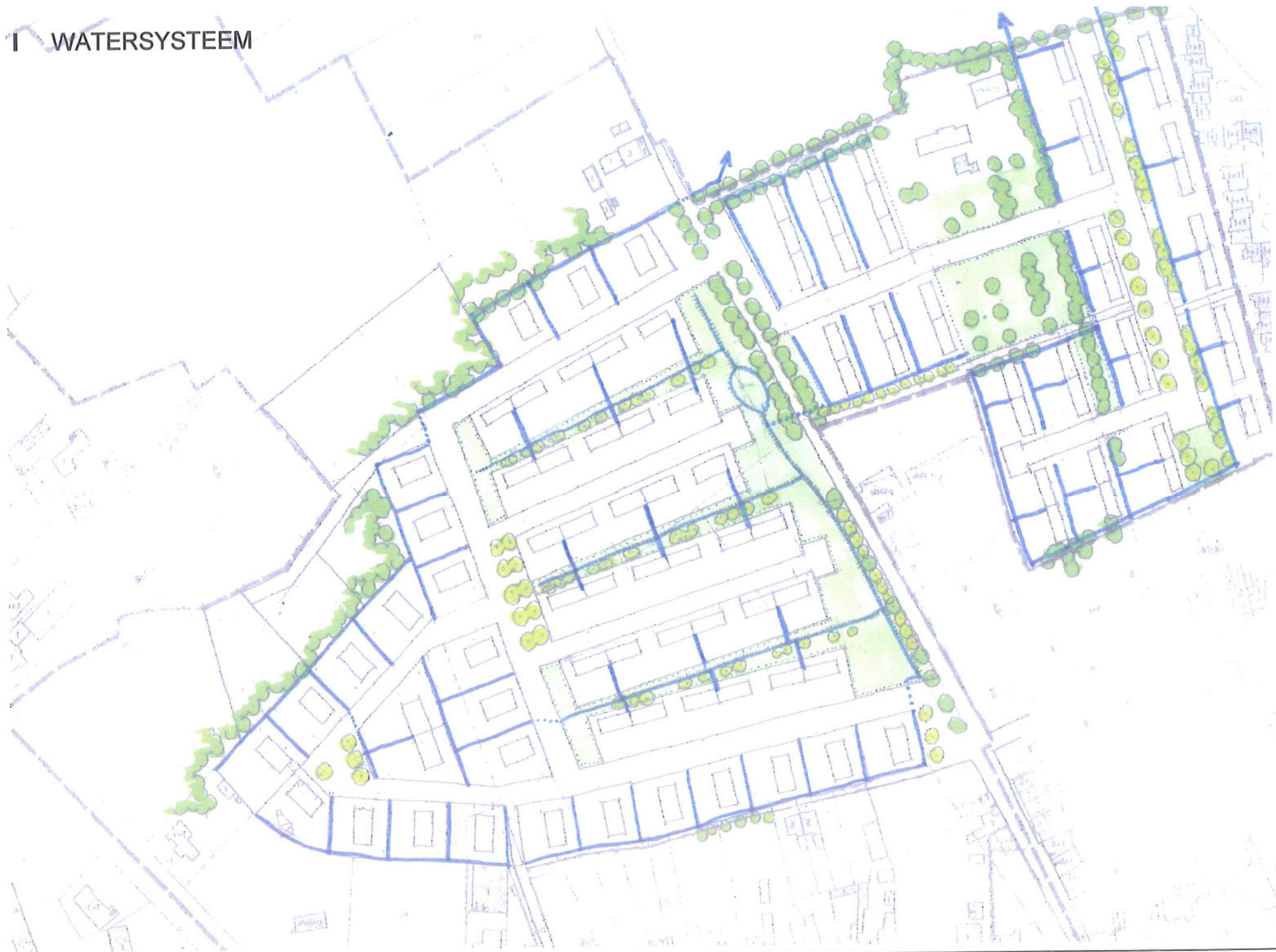
I ZICHTEN EN RICHTINGEN



I LANDSCHAPPELIJKE RELATIE



1 WATERSYSTEEM

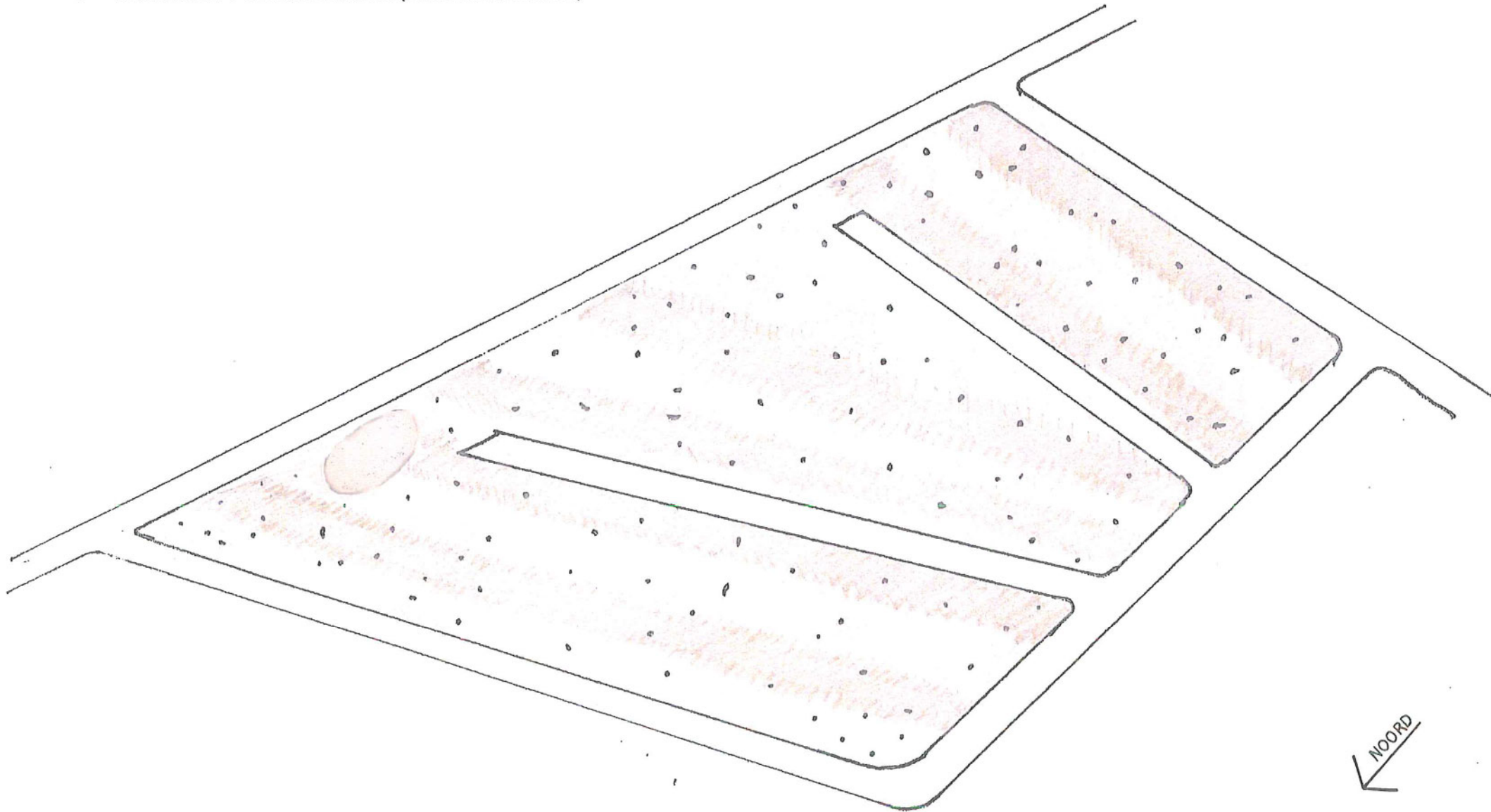


I LANDSCHAPPELIJKE CONTEXT WOONKwalITEIT



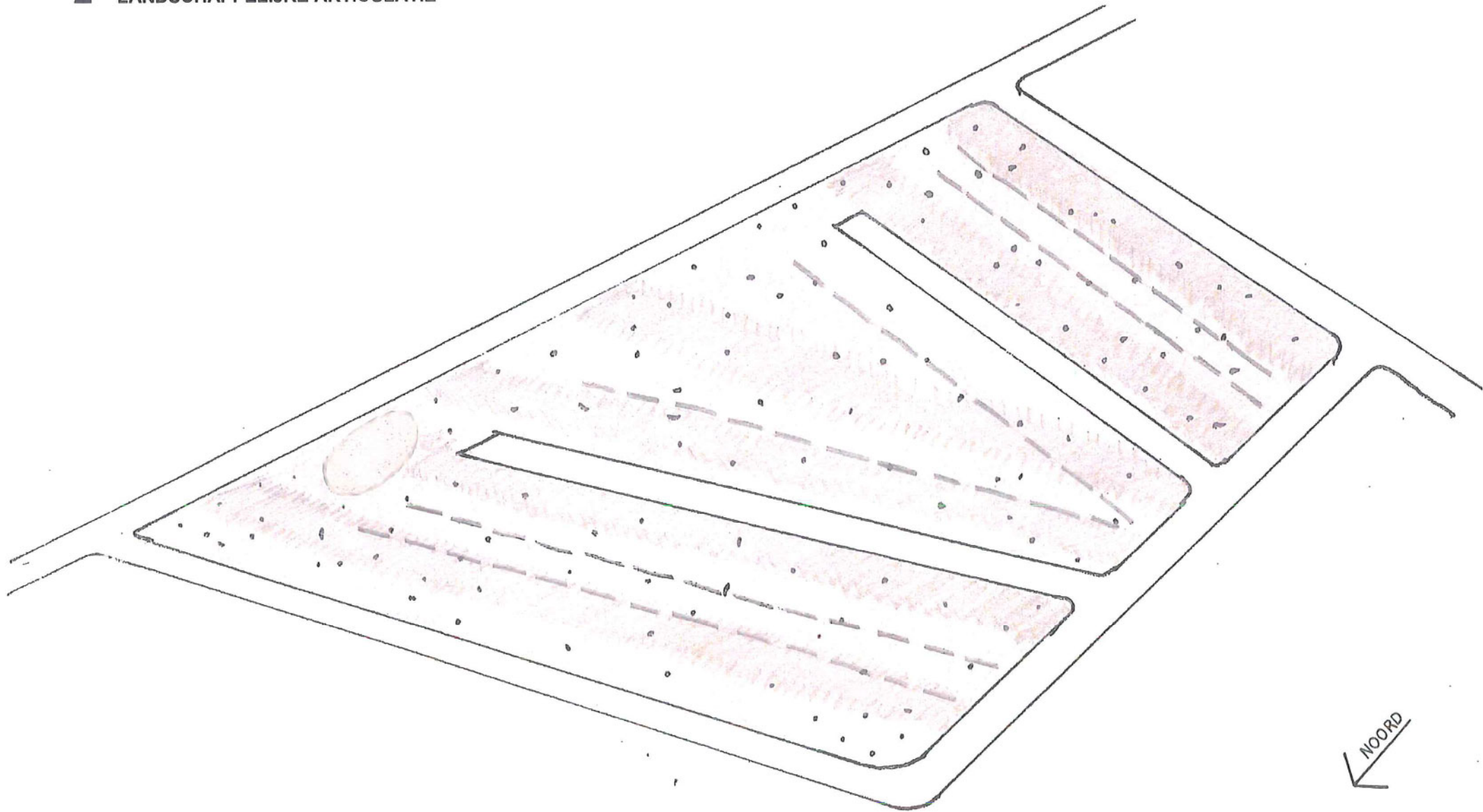
II LANDSCHAP EN ARCHITECTUUR

1 LANDSCHAPPELIJKE DRAGER (INFRASTRUCTUUR)



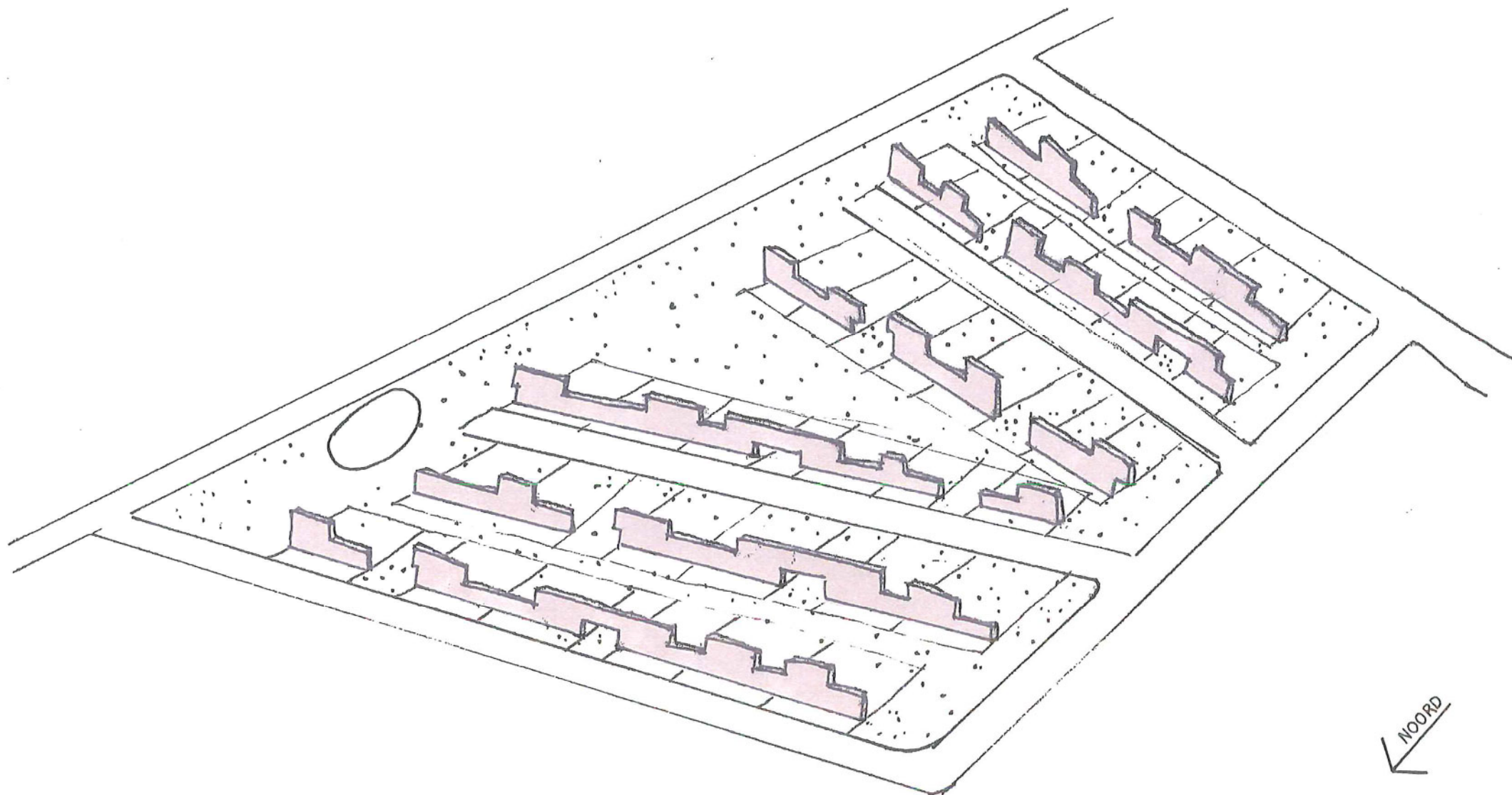
II LANDSCHAP EN ARCHITECTUUR

2 LANDSCHAPPELIJKE ARTICULATIE



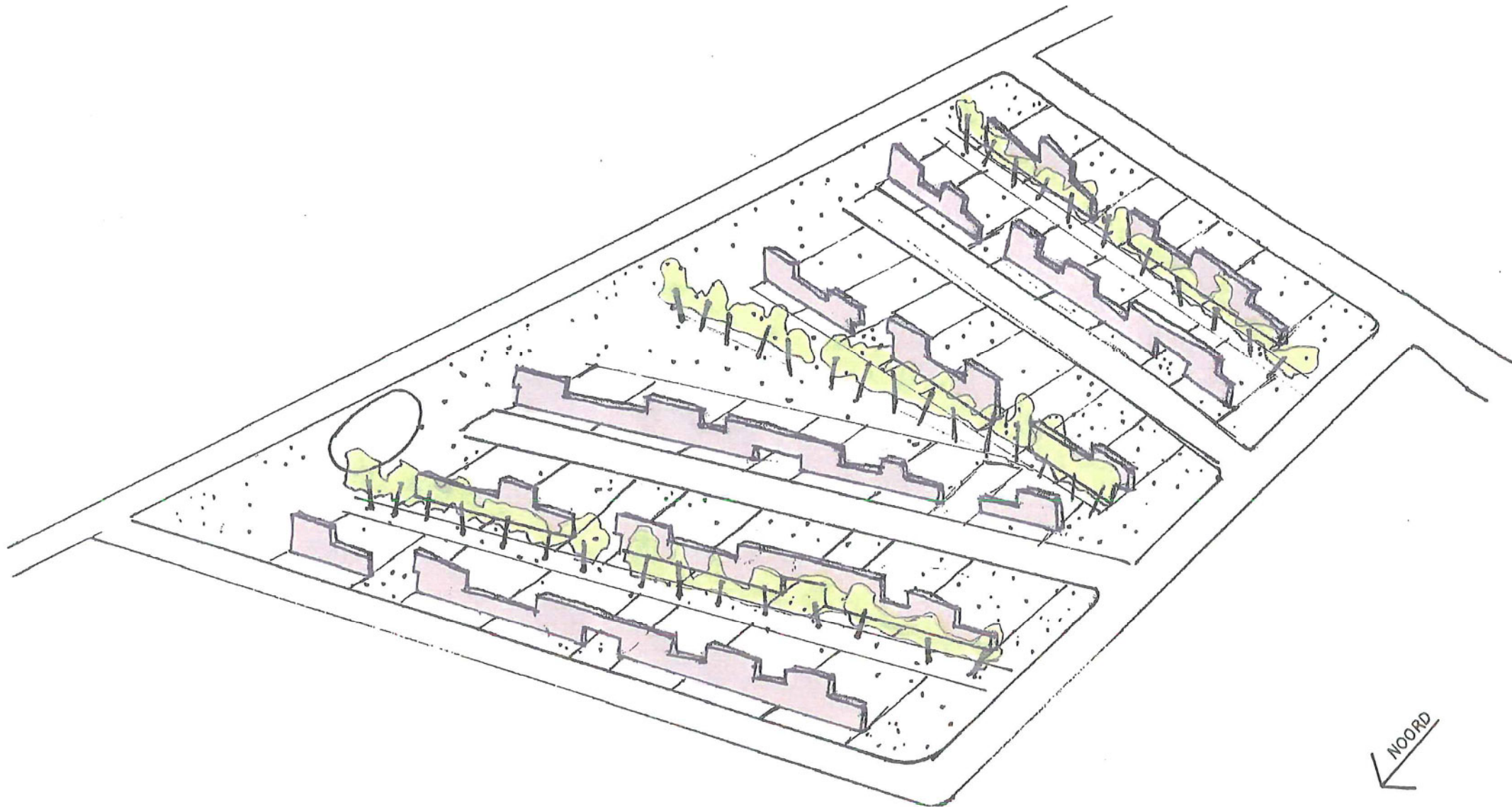
II LANDSCHAP EN ARCHITECTUUR

3 ARCHITECTURALE ARTICULATIE



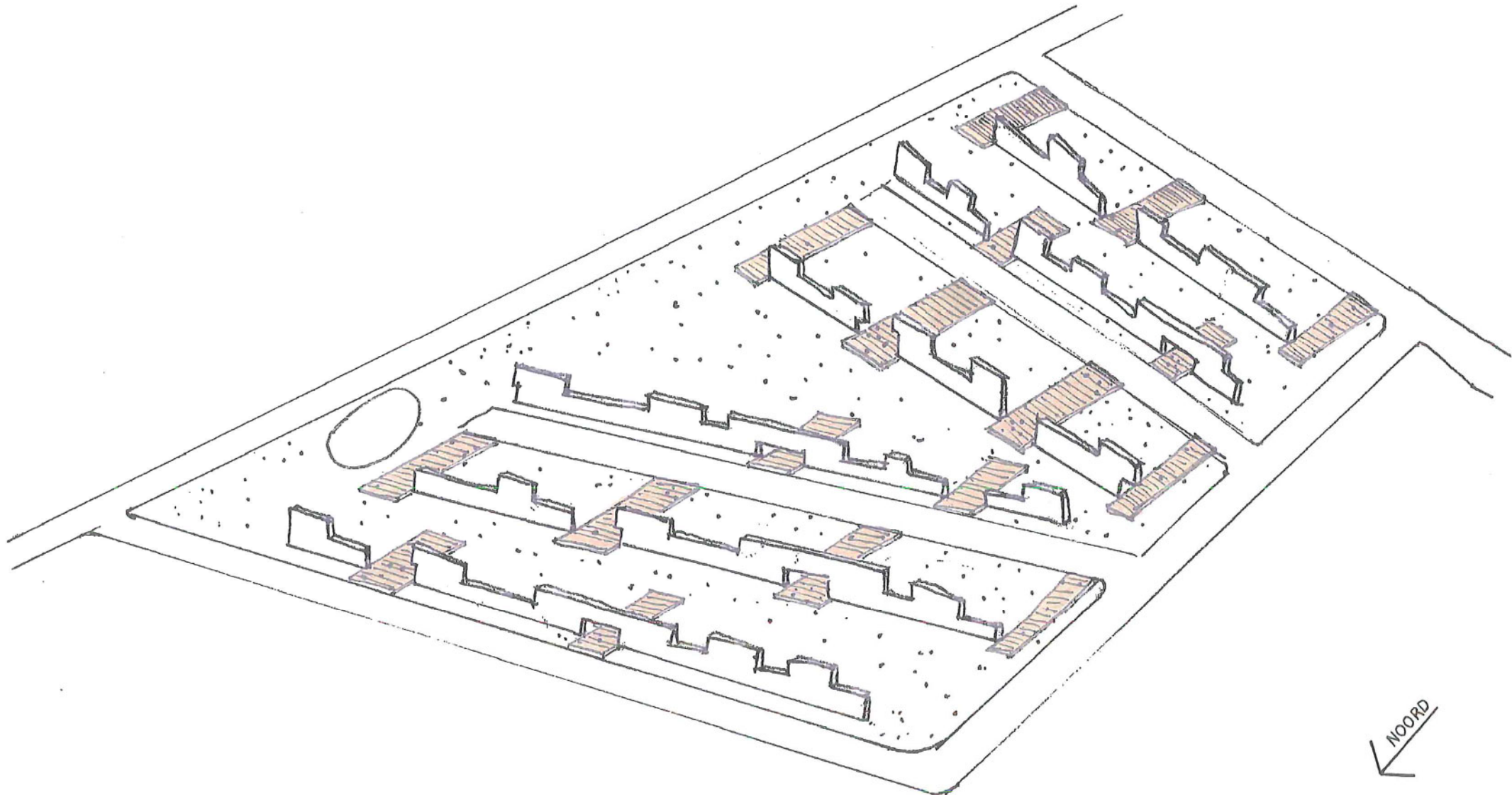
II LANDSCHAP EN ARCHITECTUUR

4 LANDSCHAPPELIJKE ARCHITECTURALE RUIMTE

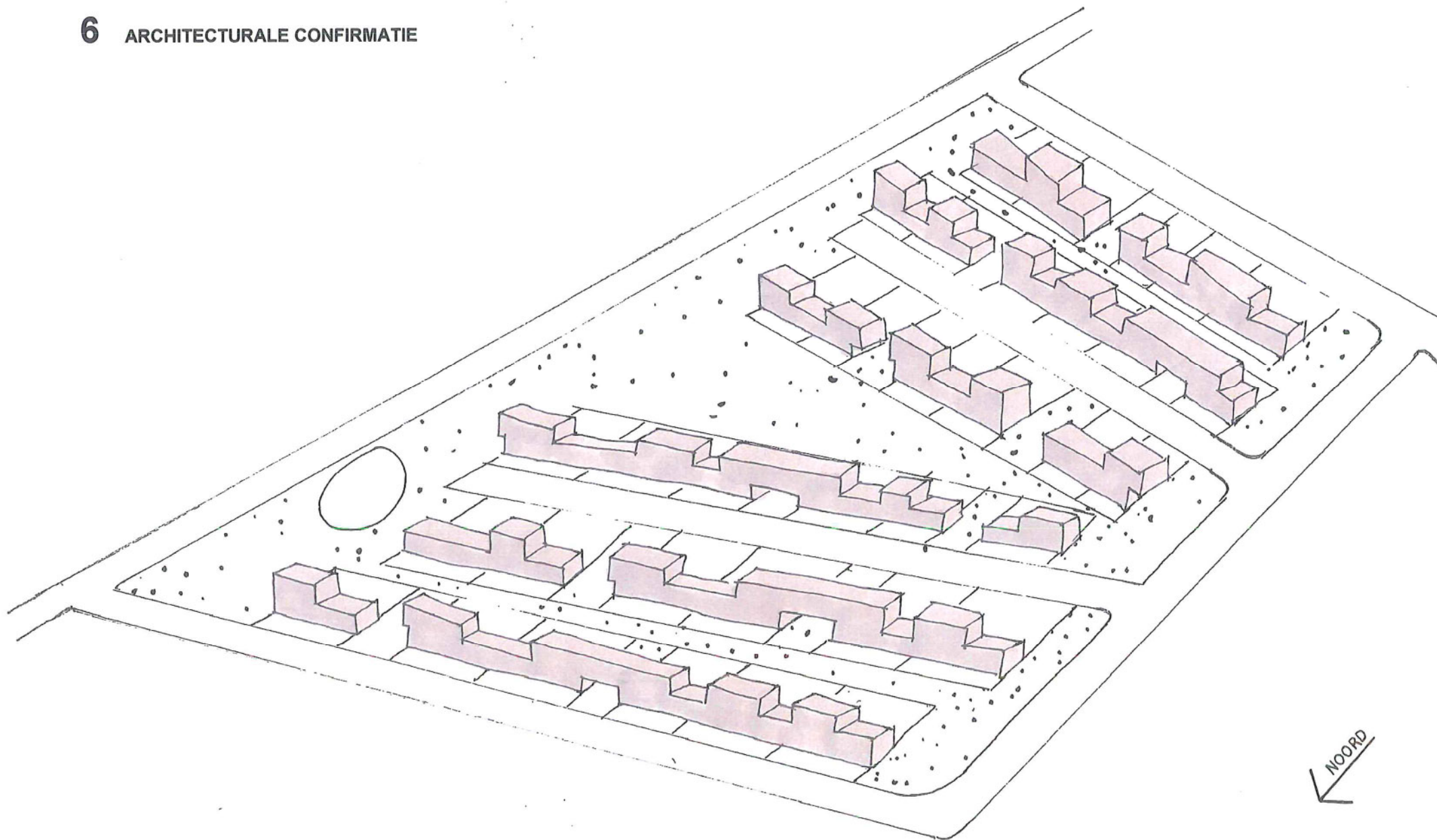


II LANDSCHAP EN ARCHITECTUUR

5 LANDSCHAPPELIJKE ARCHITECTURALE TOEGANKELIJKHEID STAPSTENEN



6 ARCHITECTURALE CONFIRMATIE

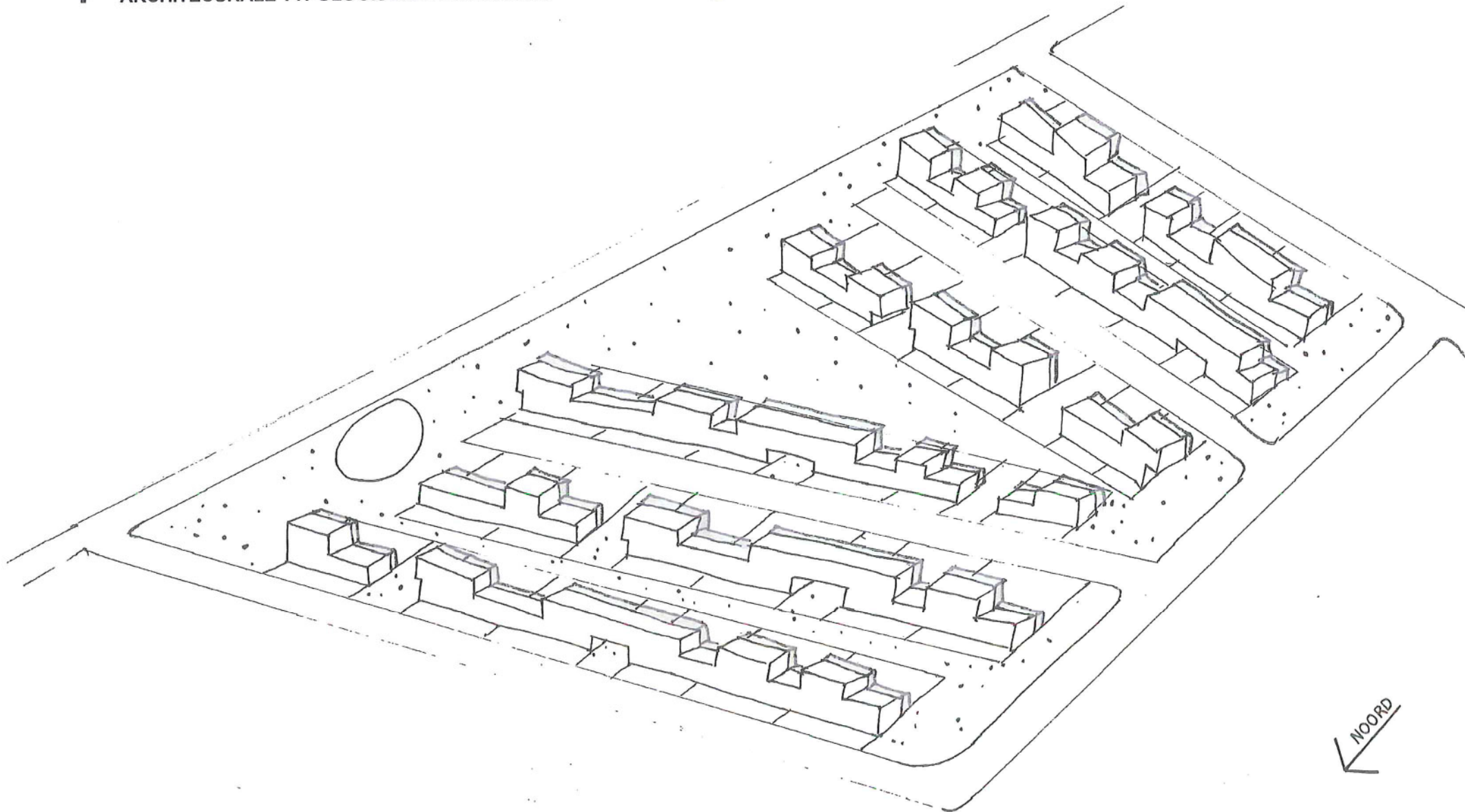


II LANDSCHAP EN ARCHITECTUUR

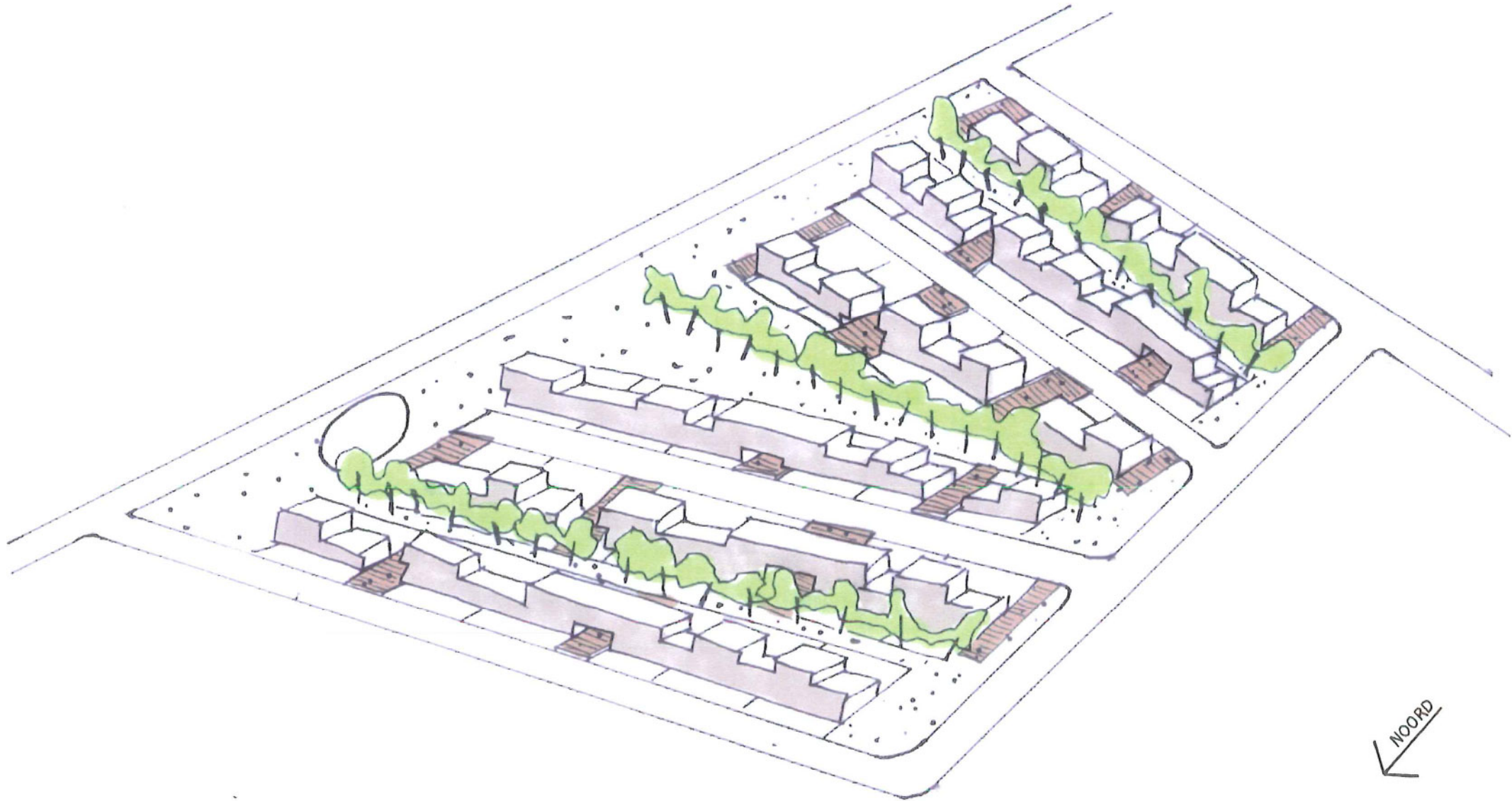
7 ARCHITECTURALE TYPOLOGISCHE HERKENNING



ORIENTATIE - FUNCTIE



8 SYNTHESE

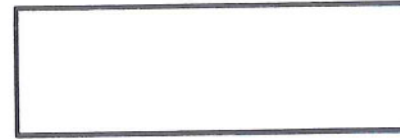


C ARCHITECTURAAL CONCEPT

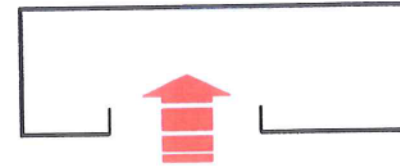
- I PLANCONCEPT
- II NOTIE REPETITIE
- III ORIENTATIE

I PLANCONCEPT

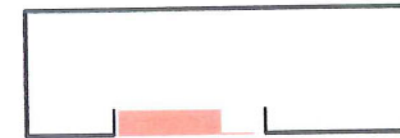
DRAGER



GEBORGENHEID



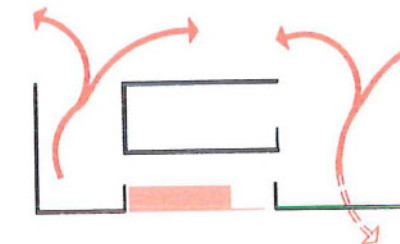
INVULLING



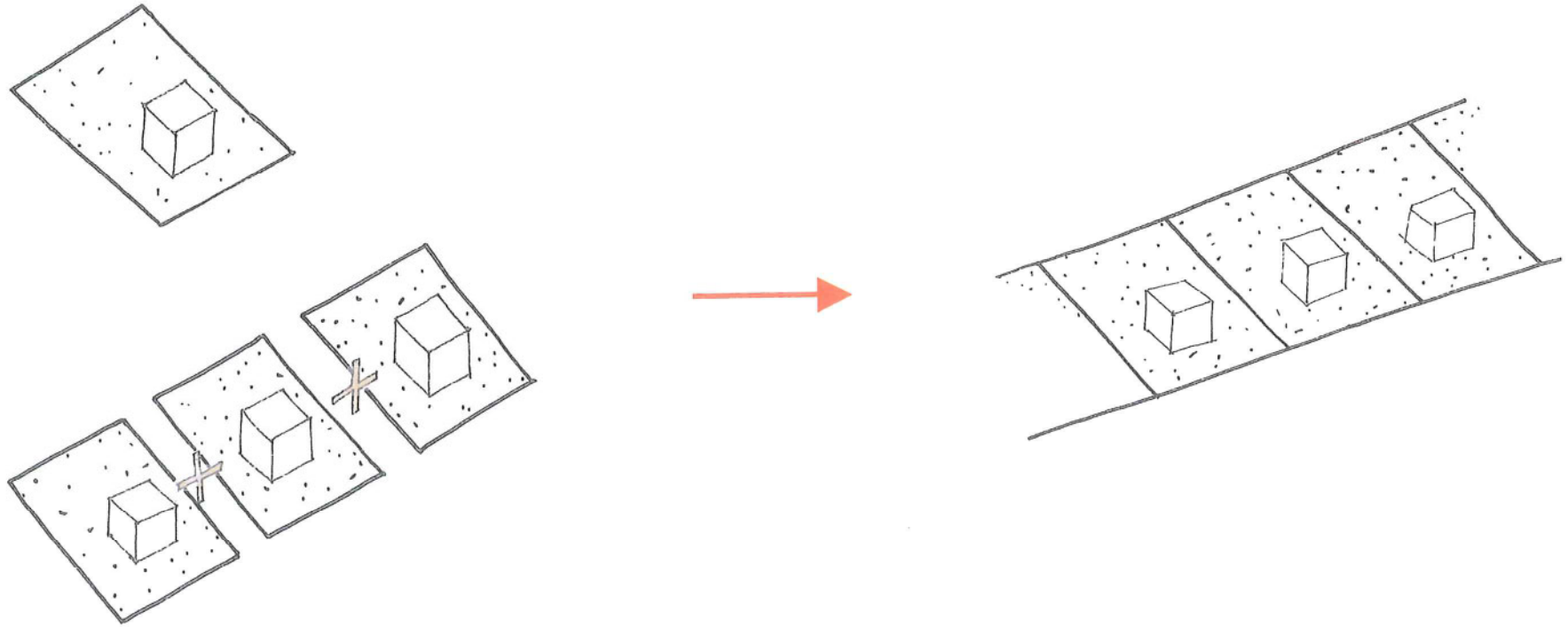
FUNCTIE



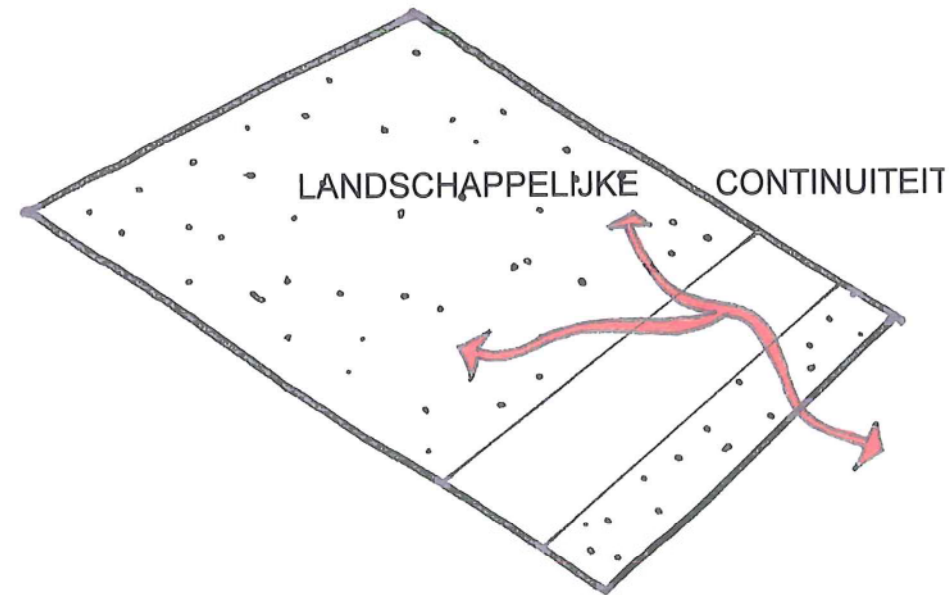
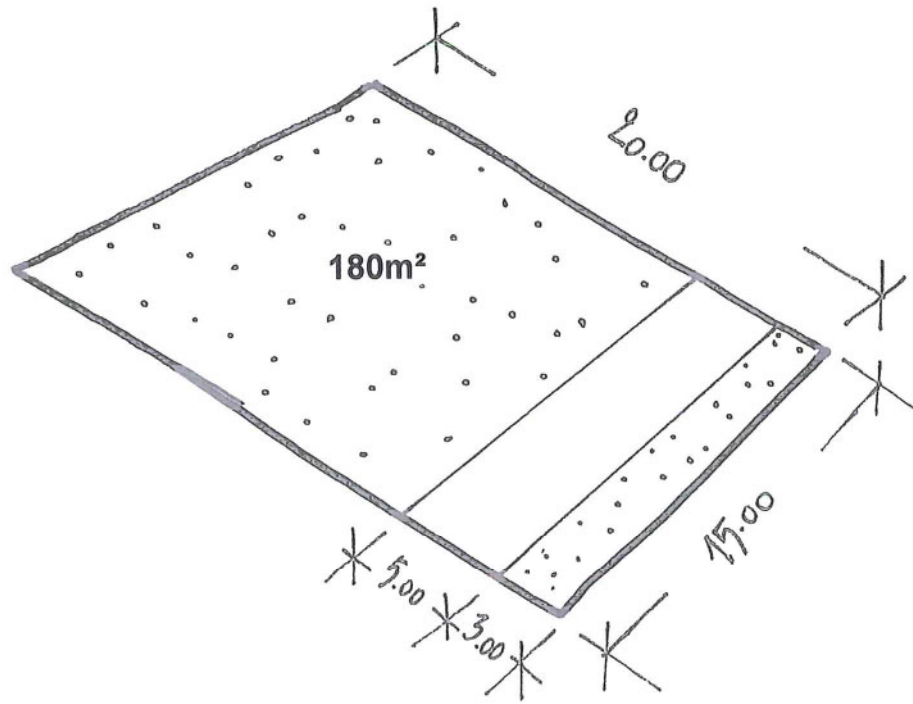
LANDSCHAPPELIJKE CONTINUÏTEIT



II NOTIE REPETITIE



III MAXIMAAL REDUCEREN → ARCHETYPE KAVEL



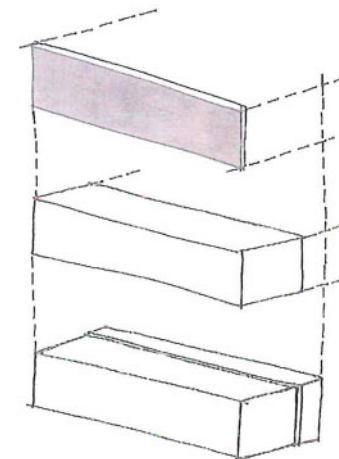
$15 \times 20\text{m}^2 = 300 \text{ m}^2$

$15 \times 12\text{m}^2 = 180 \text{ m}^2 \rightarrow 60\%$

ARCHITECTURALE ARTICULATIE

ARCHITECTURALE CONFIRMATIE

ARCHITECTURALE TYPOLOGISCHE HERKENNING

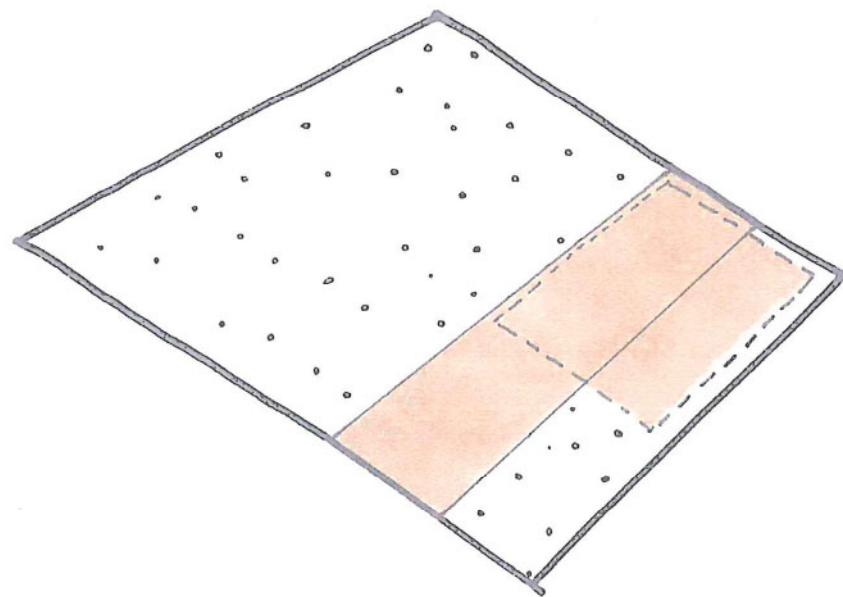
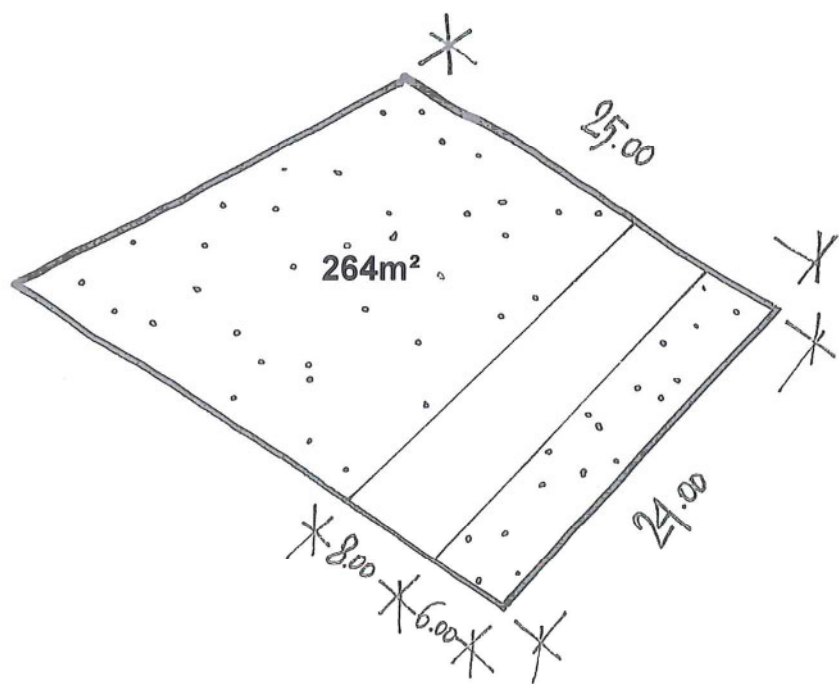


VLAK

VOLUME

ORIENTATIE

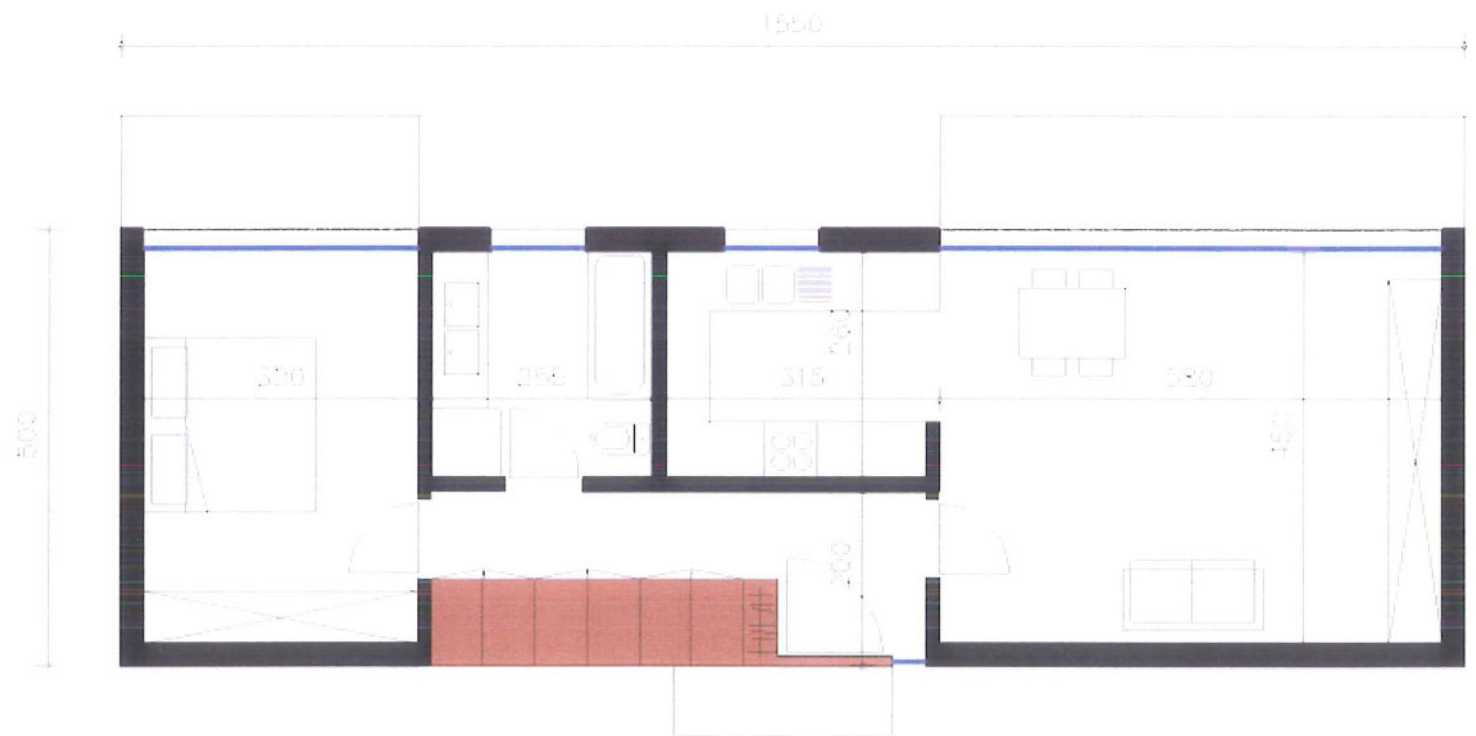
III ARCHETYPE KAVEL



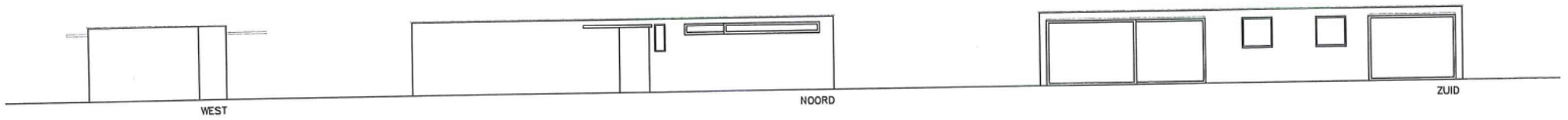
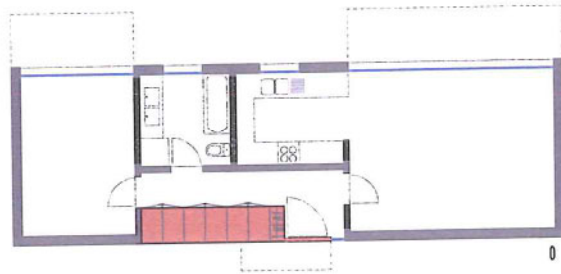
264m² BESTEMDE TUIN

D ARCHITECTURAAL SYSTEEM

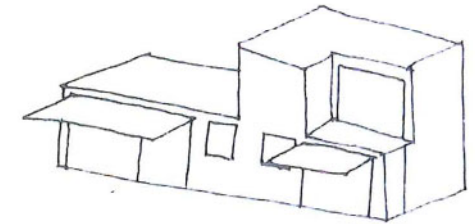
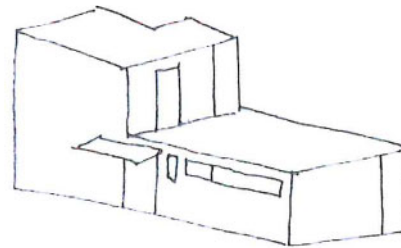
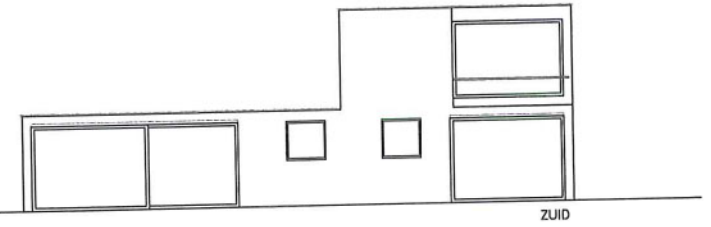
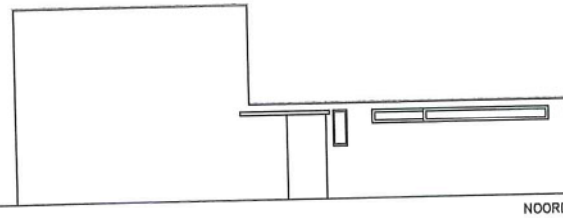
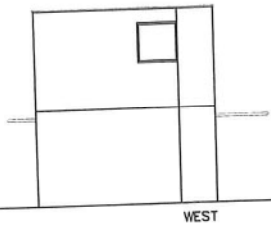
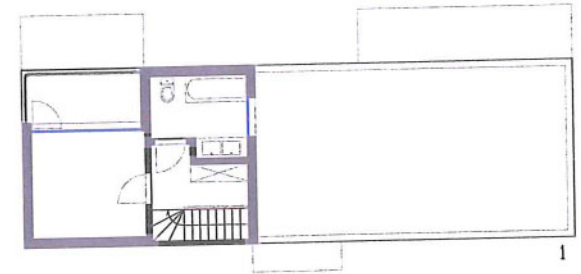
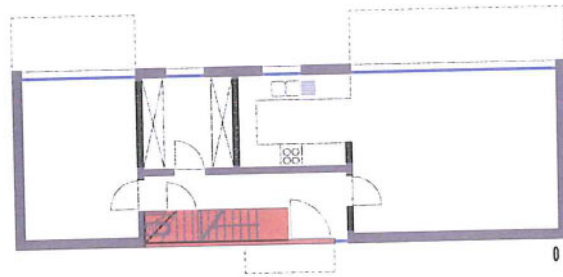
1/2 - 66m²



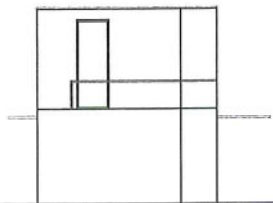
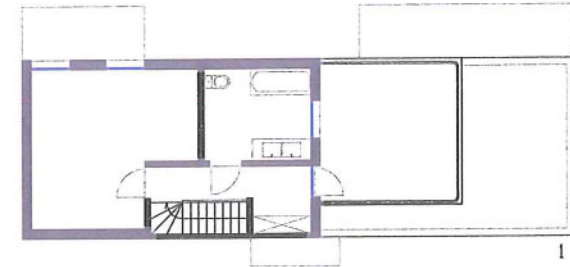
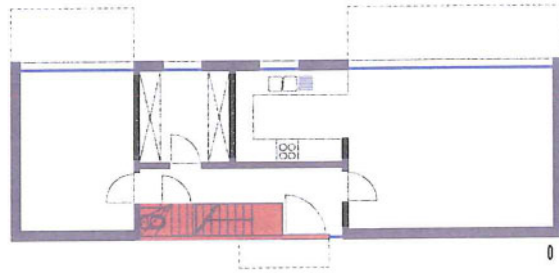
1/2-66m²



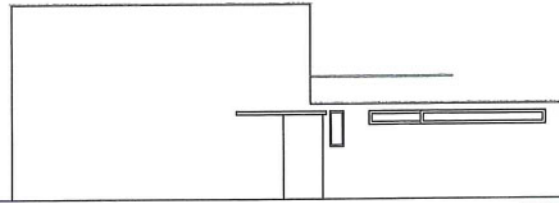
2/3-88m²



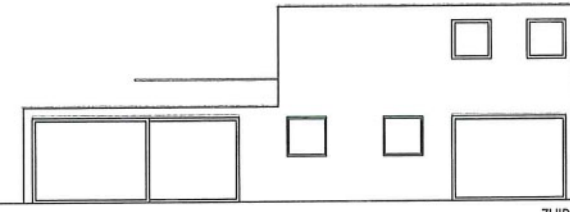
2/4-100m²



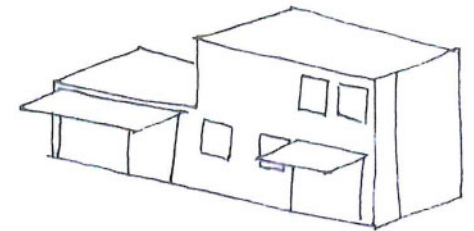
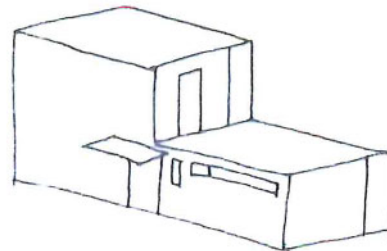
WEST



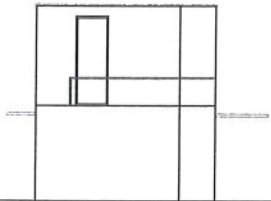
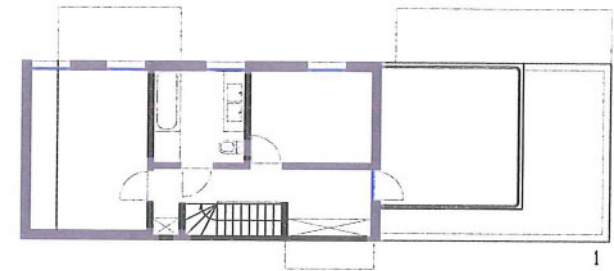
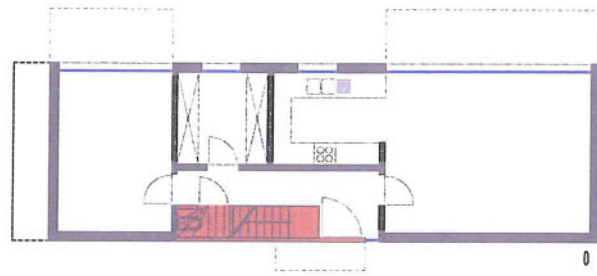
NOORD



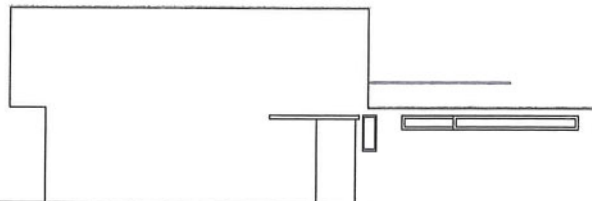
ZUID



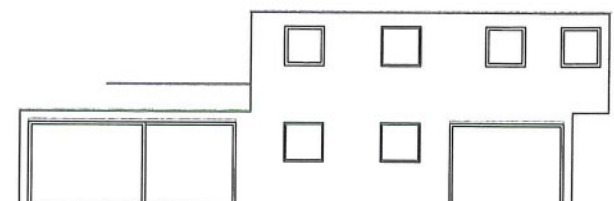
3/4-108m²



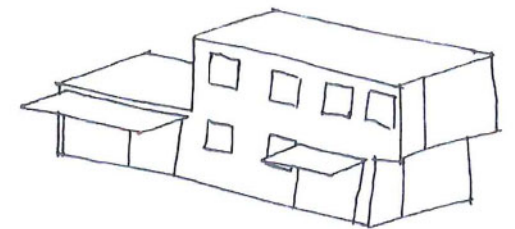
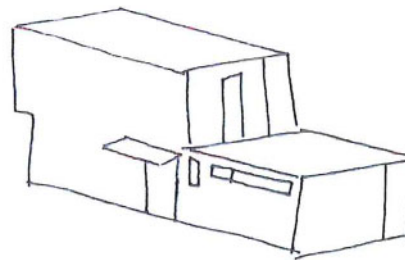
WEST



NOORD



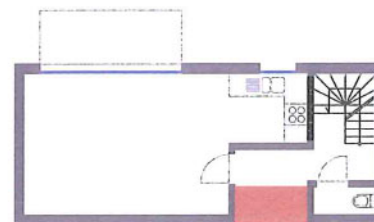
ZUID



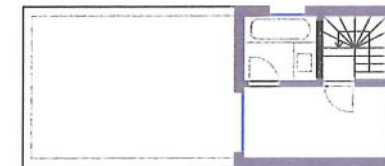
1/1-63m²



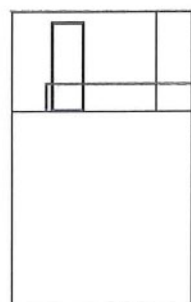
0



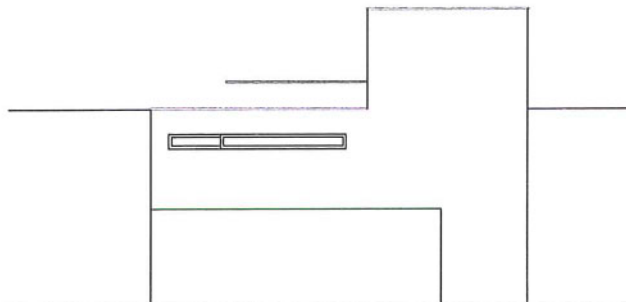
1



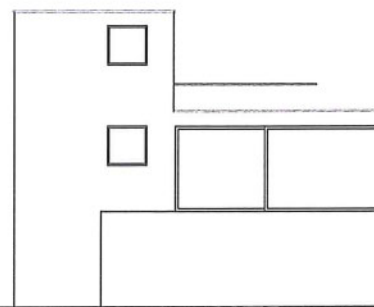
2



WEST

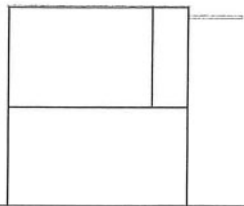
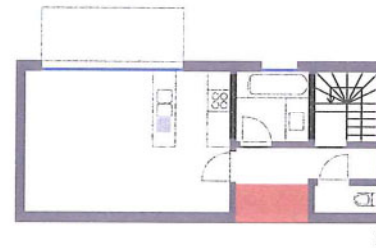
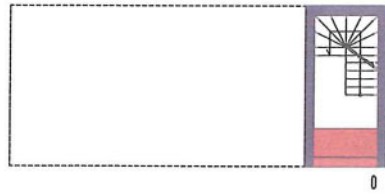


NOORD

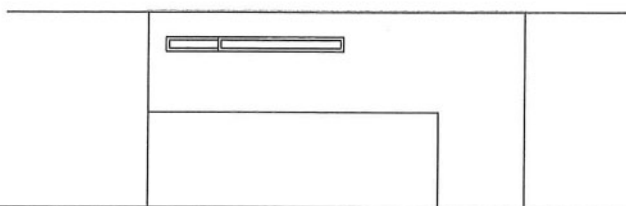


ZUID

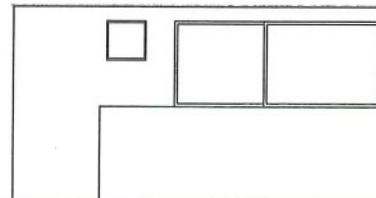
0/1-47m²



WEST



NOORD



ZUID

Type	Max. Opp. m ²	Leefruimte m ²	Keuken m ²	Badkamer m ²	Berging m ²	Hall+vest. m ²	Slaapk. 1 m ²	Slaapk. 2 m ²	Slaapk. 3 m ²	Totale opp. m ²
0/1	52	23,2	/	4,1	3,1	15,1				45,50
1/1	64	23,2	4,4	3,8	3,1	18	8,2			60,70
1/2	66	26	7,8	6,6	4	7,2	14,4			66,00
2/3	88	26	7,8	5,5	6,5	18	14,4	9,8		88,00
2/4	100	26	7,8	7	10	17	14,4	17,8		100,00
3/4	108	26	7,8	6,6	11	17,8	14,4	14,8	8,8	107,20
3/5	121	28,1	7,8	6,6	11,2	21,6	14,4	16,6	14,7	121,00

E ARCHETYPEN EN REFERENTIES

I OMGEVINGSARCHETYPEN

II ARCHITECTURALE INTENTIES

I OMGEVINGSARCHETYPEN

1 STRAATVORMING → VORM EN MATERIAAL



I OMGEVINGSARCHETYPEN

2 BEBOUWING – PUBLIEKE RUIMTE



I OMGEVINGSARCHETYPEN



I OMGEVINGSARCHETYPEN

3 REPETITIE - INVULLING



I OMGEVINGSARCHETYPEN



II ARCHITECTURALE INTENTIES

1 TYPOLOGIE



WONEN - TUIN - LANDSCHAP



Bron: SIGNATUR, Juul & Frost architects, Copenhagen

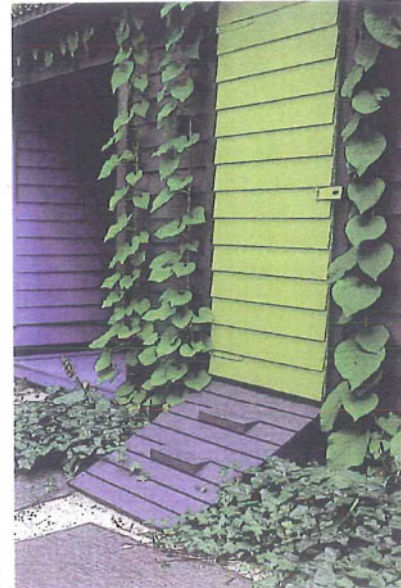


II ARCHITECTURALE INTENTIES

1 TYPOLOGIE



WONEN - TUIN - LANDSCHAP



Bron: BYGGEKUNST 2001 - 7

II ARCHITECTURALE INTENTIES

1 TYPOLOGIE

→ WONEN - TUIN - LANDSCHAP

→ REPETITIVITEIT



Bron: BYGGEKUNST 2002 - 6

II ARCHITECTURALE INTENTIES

2 INTERIEUR – LANDSCHAPPELIJKE CONTINUITEIT



Bron: BYGGEKUNST 2003 - 1



Bron: BYGGEKUNST 2003 - 1



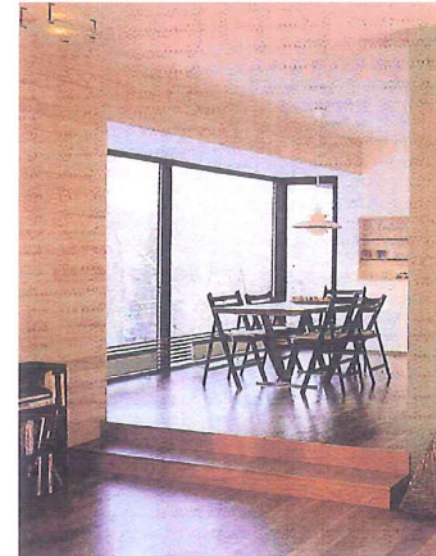
Bron: BYGGEKUNST 2001 - 6

II ARCHITECTURALE INTENTIES

2 INTERIEUR – LANDSCHAPPELIJKE CONTINUITEIT



Bron: Samlede arbeider, Sverre Fehn



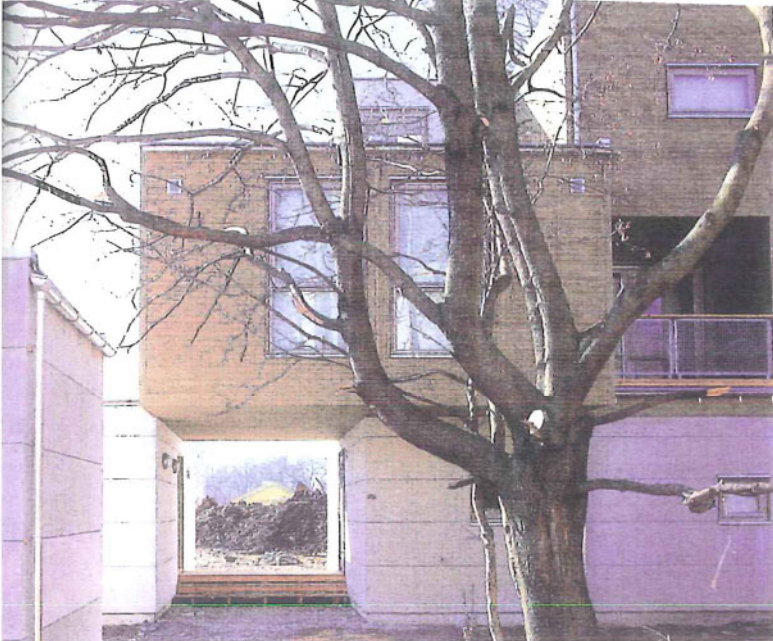
Bron: BYGGEKUNST 1999 - 2



Bron: BYGGEKUNST 2002 - 3

II ARCHITECTURALE INTENTIES

2 INTERIEUR – LANDSCHAPPELIJKE CONTINUITEIT



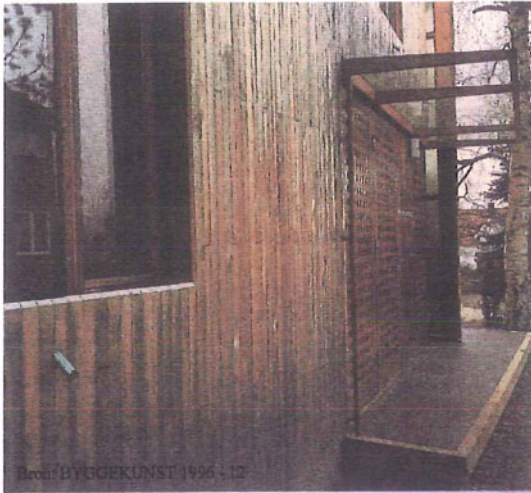
Bron: BYGGEKUNST 2003 - 4



Bron: BYGGEKUNST 2000 - 7

II ARCHITECTURALE INTENTIES

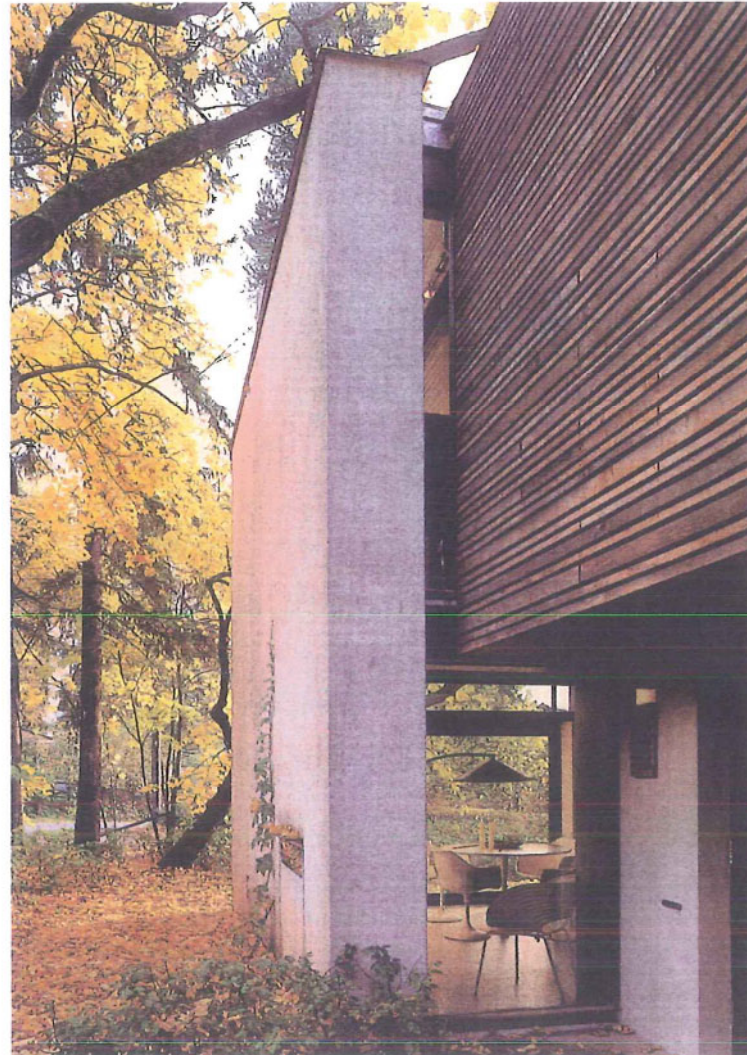
3 GEBORGENHEID



Bron: BYGGEKUNST 1996 - 12



Bron: Samlede arbeider, Sverre Fehn



Bron: BYGGEKUNST 2000 - 7

II ARCHITECTURALE INTENTIES

4 FUNCTIONELE CONTINUITEIT



Bron: BYGGEKUNST 2003 - 3



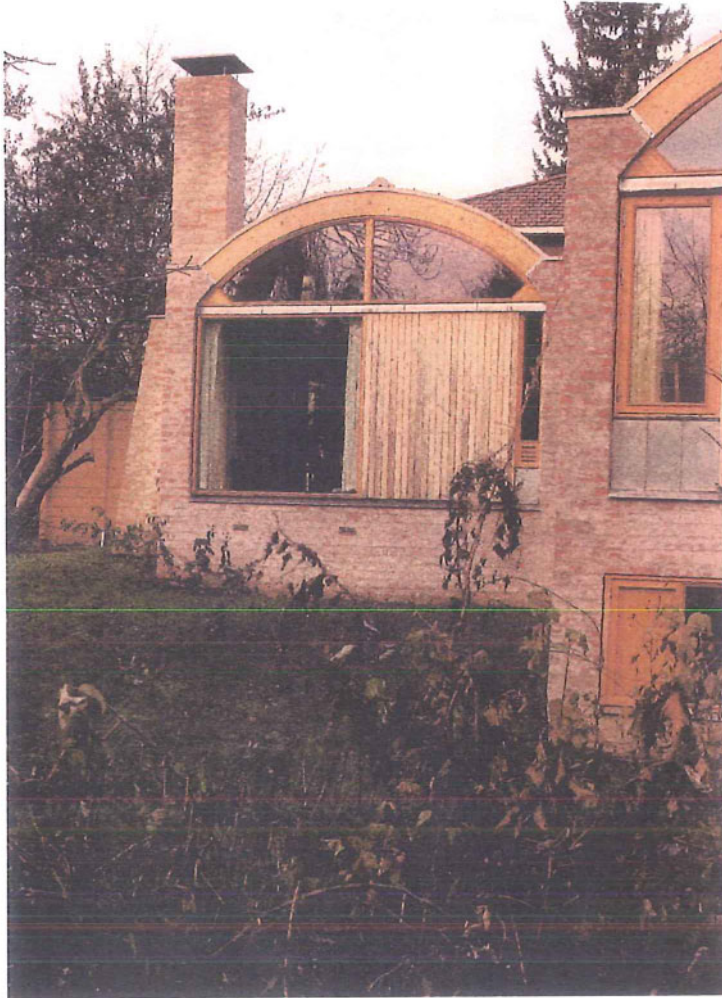
Bron: BYGGEKUNST 1997 - 7



Bron: BYGGEKUNST 2003 - 3

II ARCHITECTURALE INTENTIES

5 MATERIAAL



Bron: BYGGEKUNST 1998 - 1



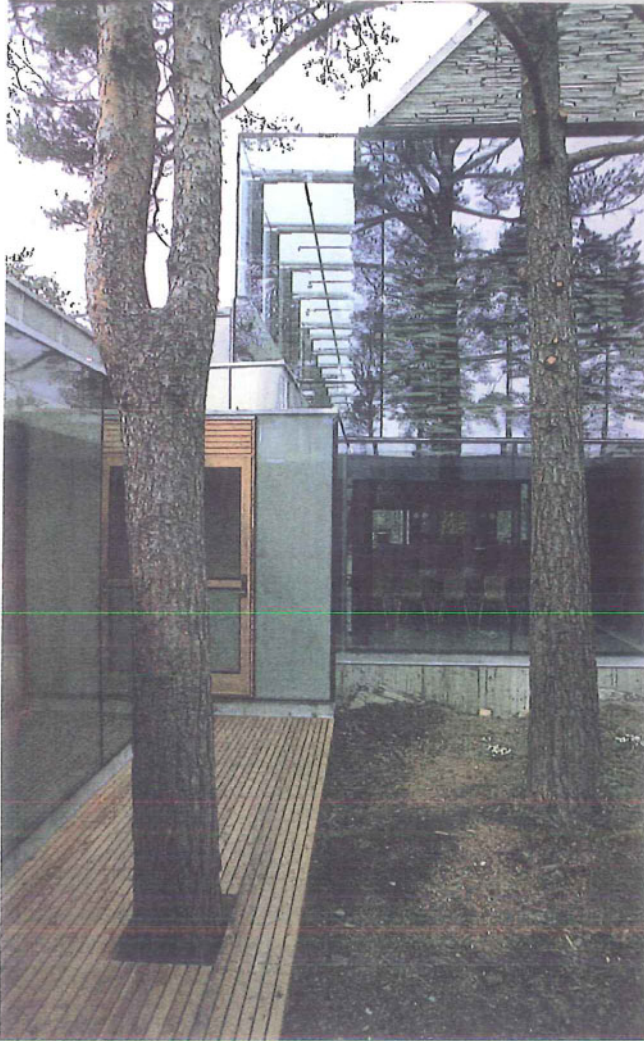
Bron: BYGGEKUNST 1998 - 1



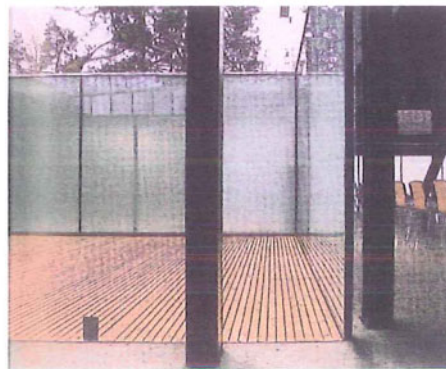
Bron: BYGGEKUNST 2003 - 1

II ARCHITECTURALE INTENTIES

6 SYNTHESE

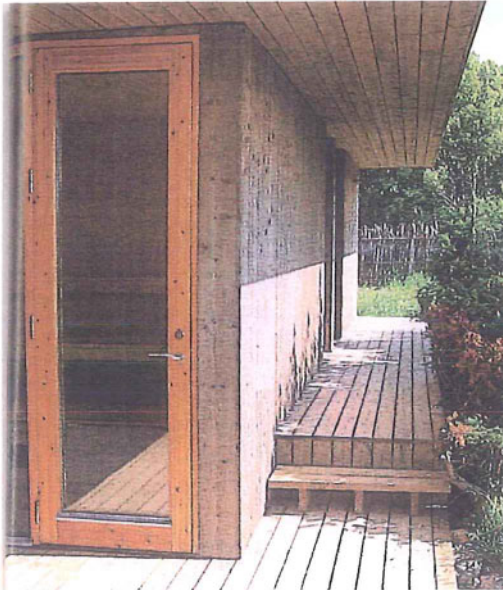


Bron: BYGGEKUNST 2002 - 4

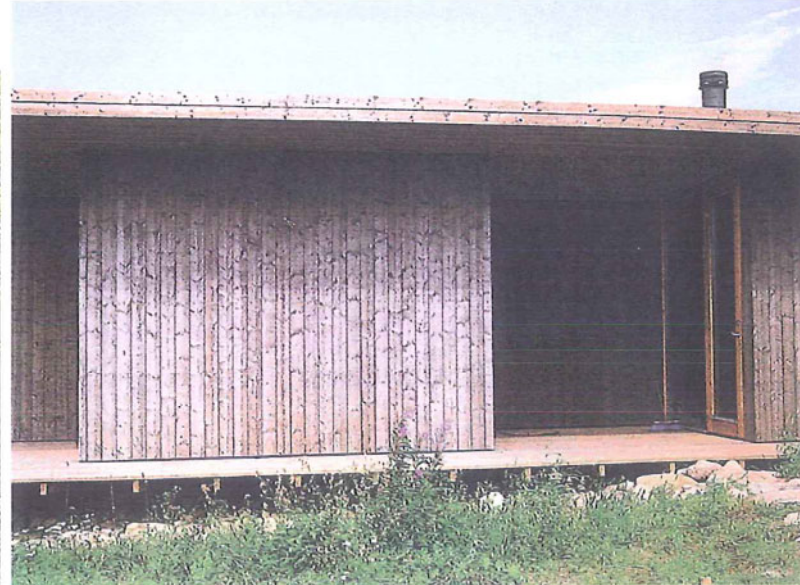


II ARCHITECTURALE INTENTIES

6 SYNTHESE



Bron: BYGGEKUNST 2001 - 6



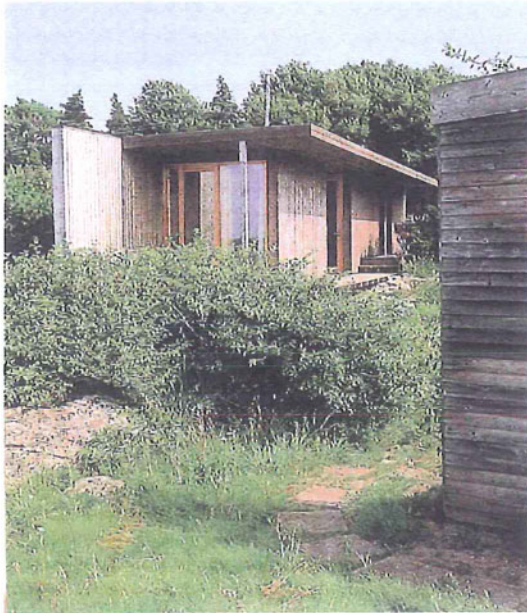
Bron: BYGGEKUNST 2001 - 6



Bron: BYGGEKUNST 2003 - 1

II ARCHITECTURALE INTENTIES

6 SYNTHESE



Bron: BYGGEKUNST 2001 - 6



Bron: BYGGEKUNST 2003 - 6

