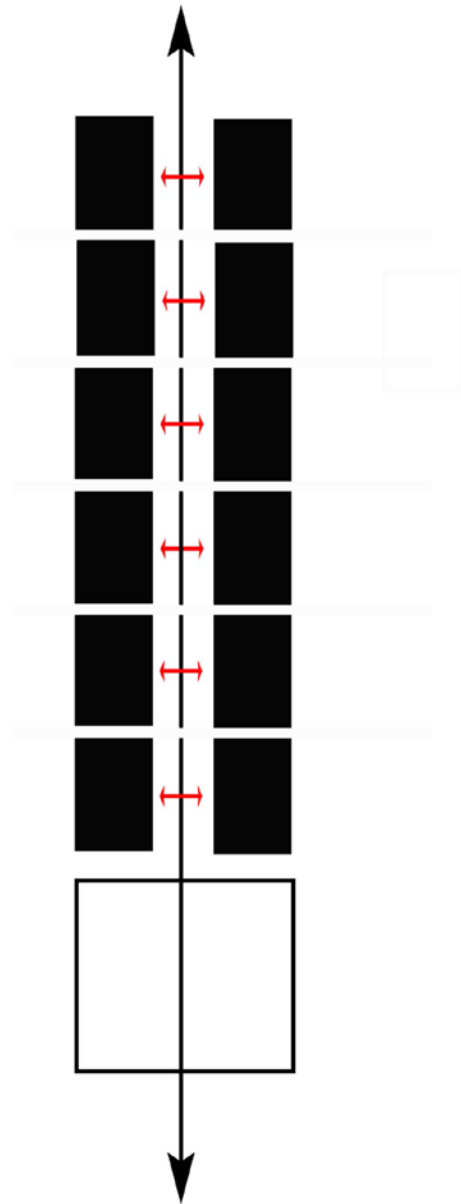
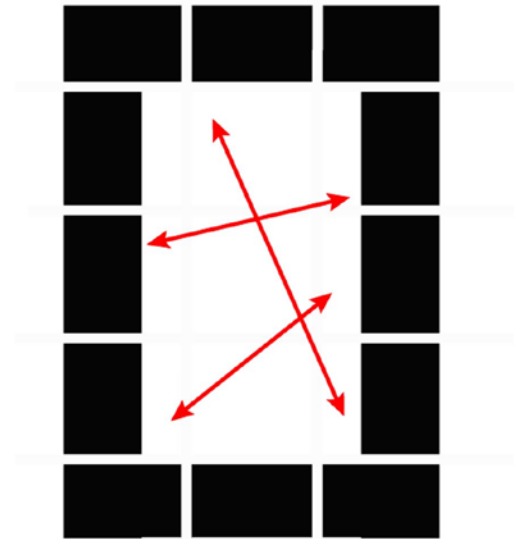


schakelschool kuringen

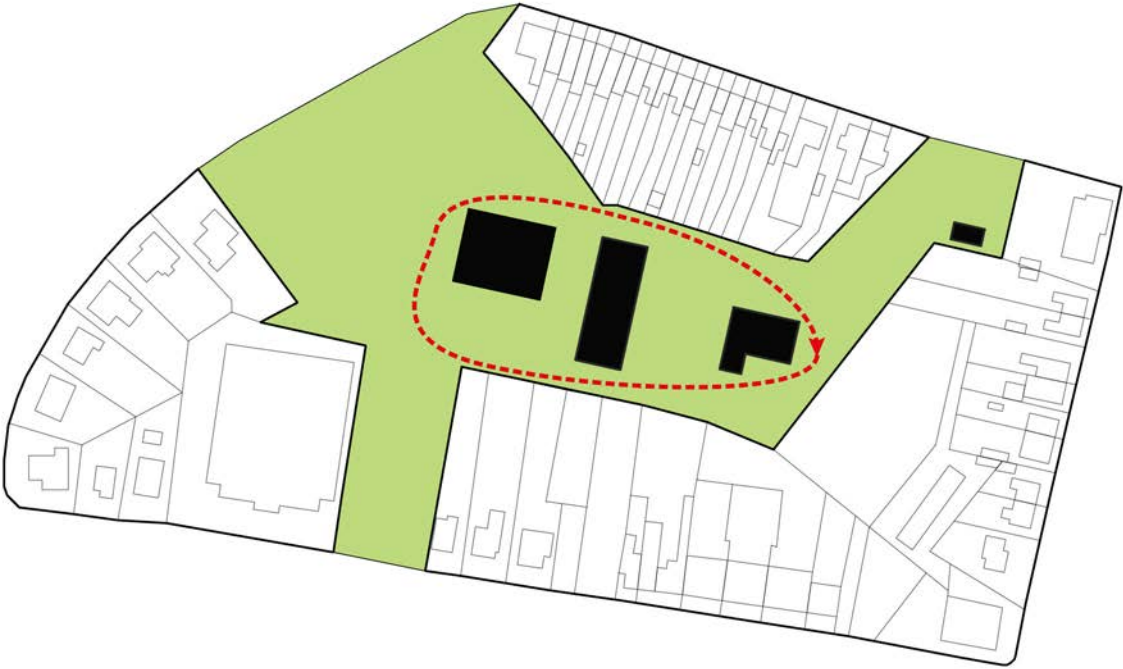


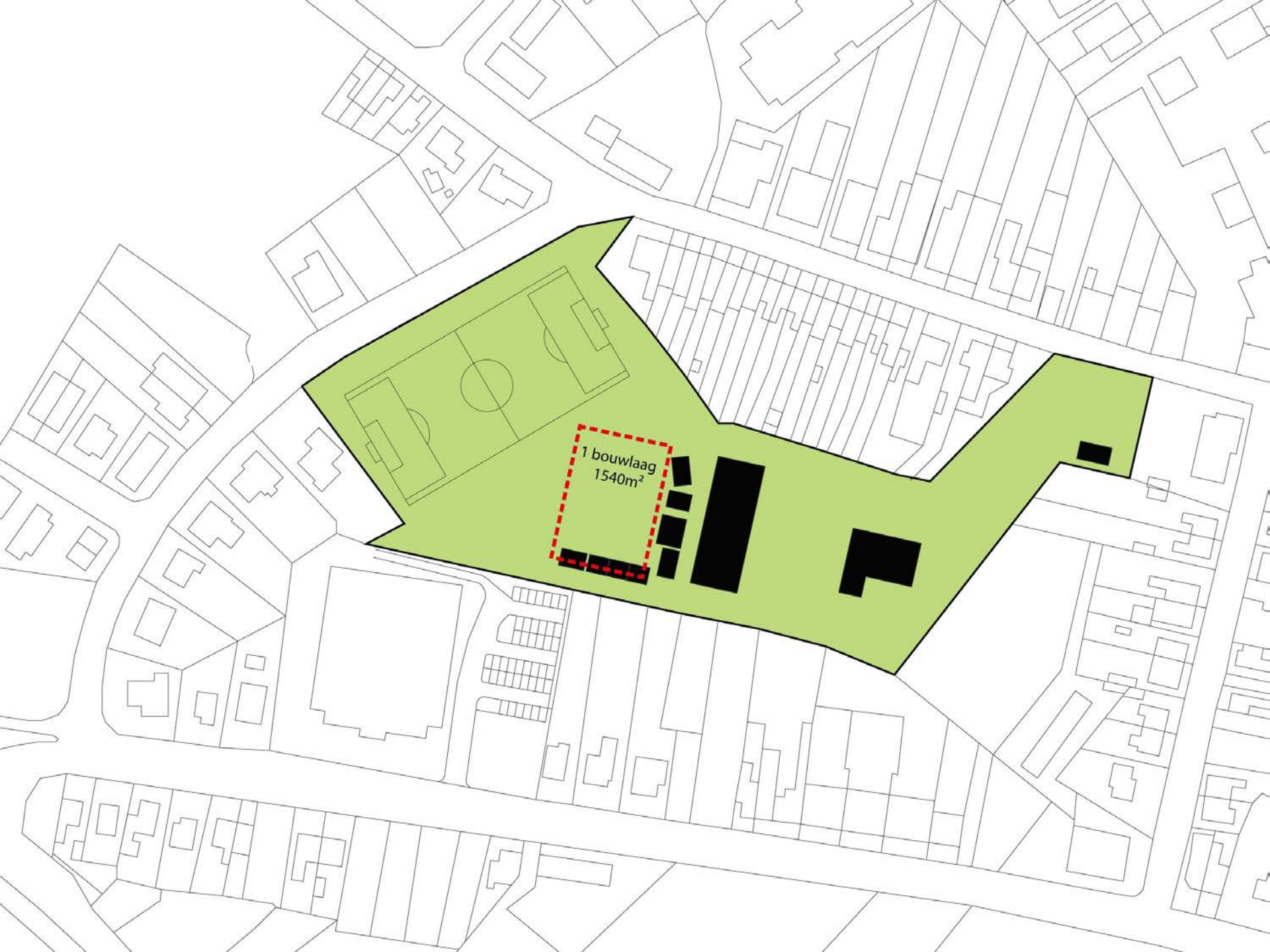


lijnschool : gang met op het einde de polyvalente zaal

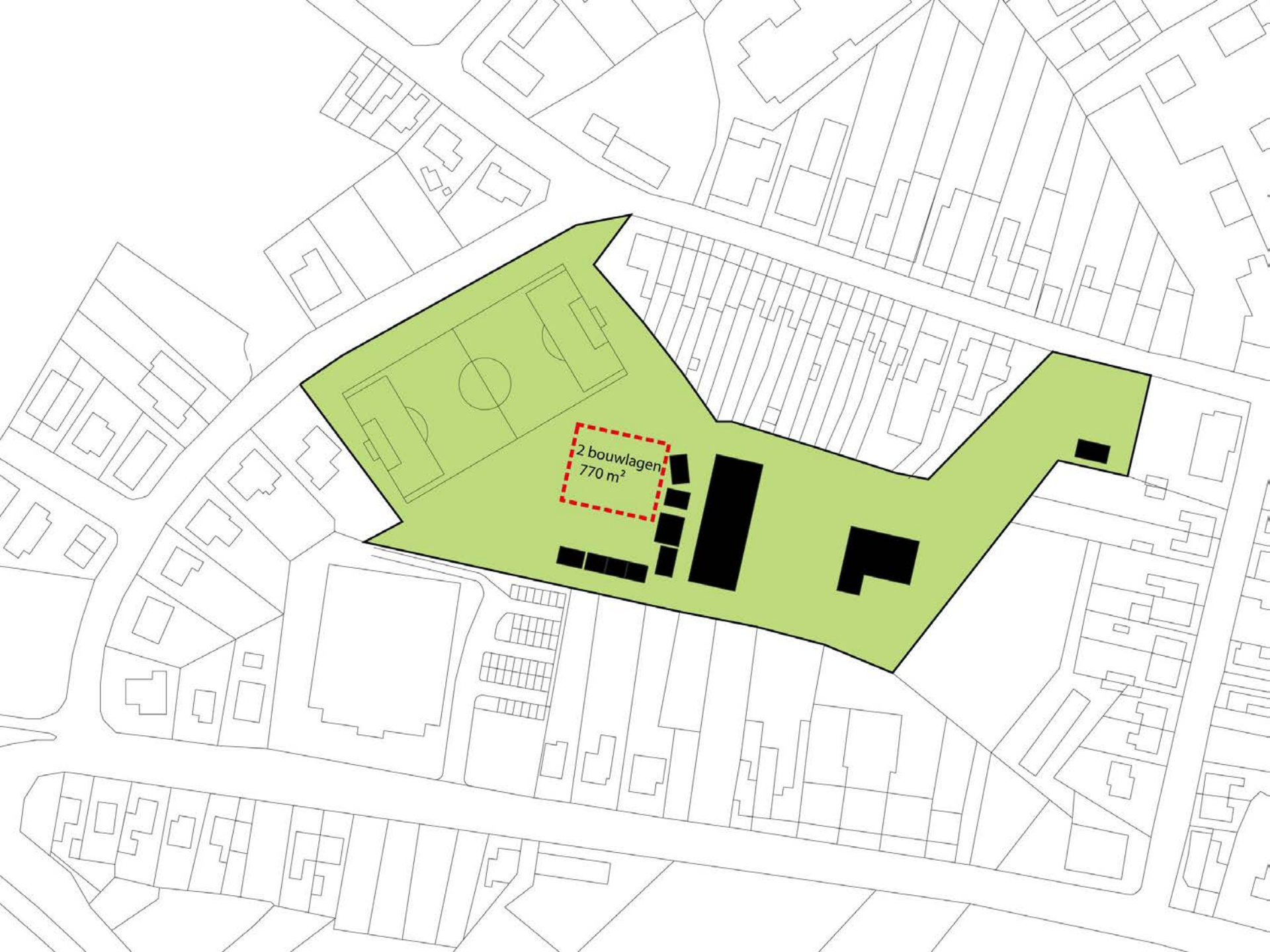


pleinschool: centrale ruimte met klassen rondom

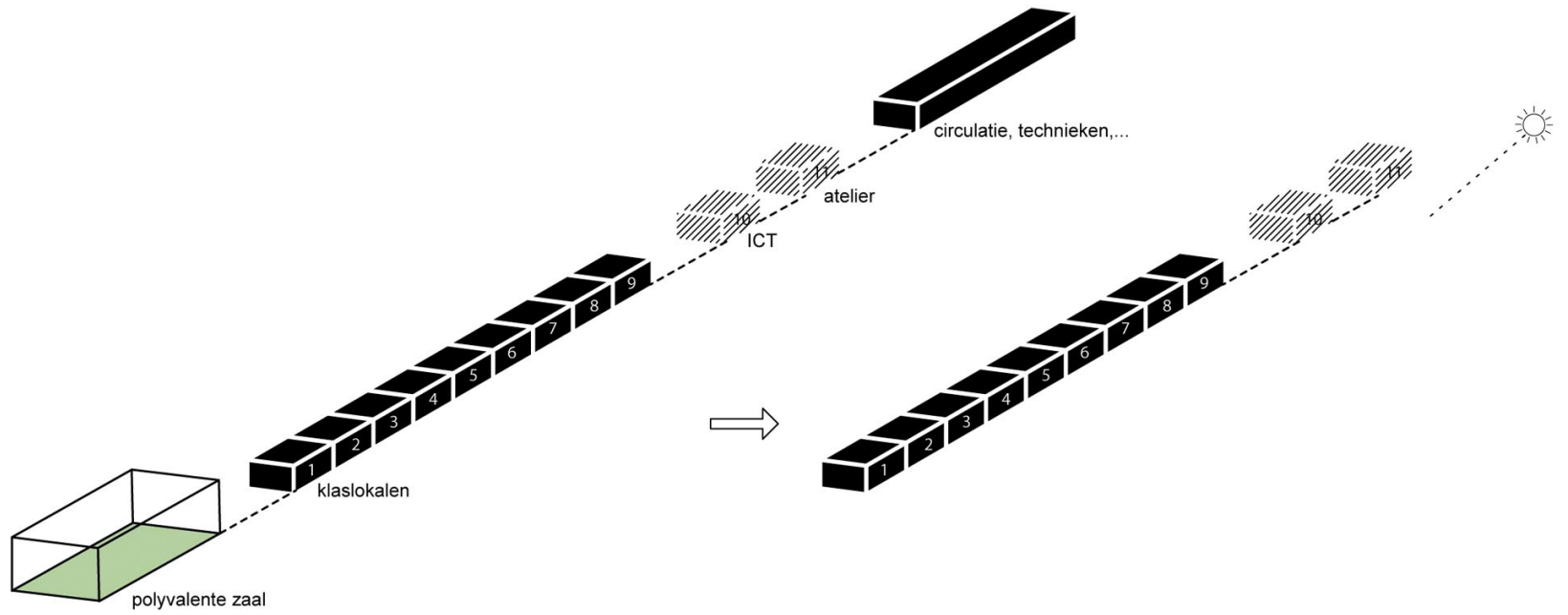


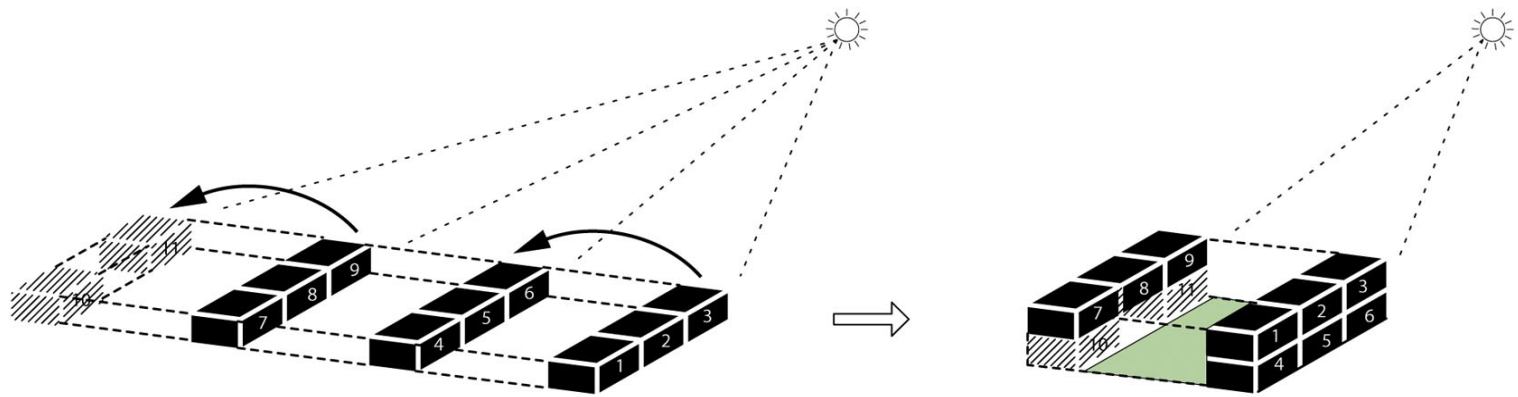


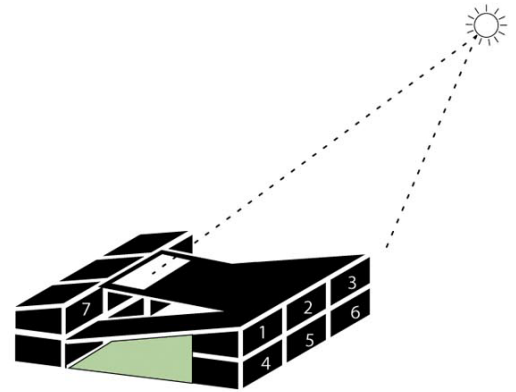
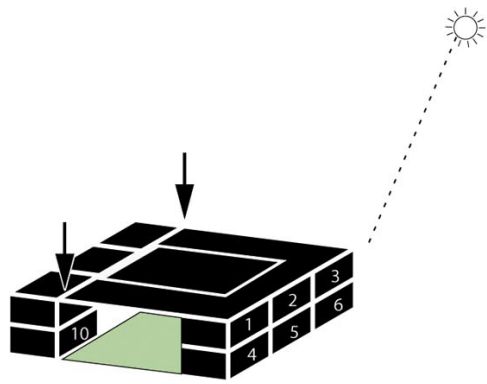
1 bouwlaag
1540m²

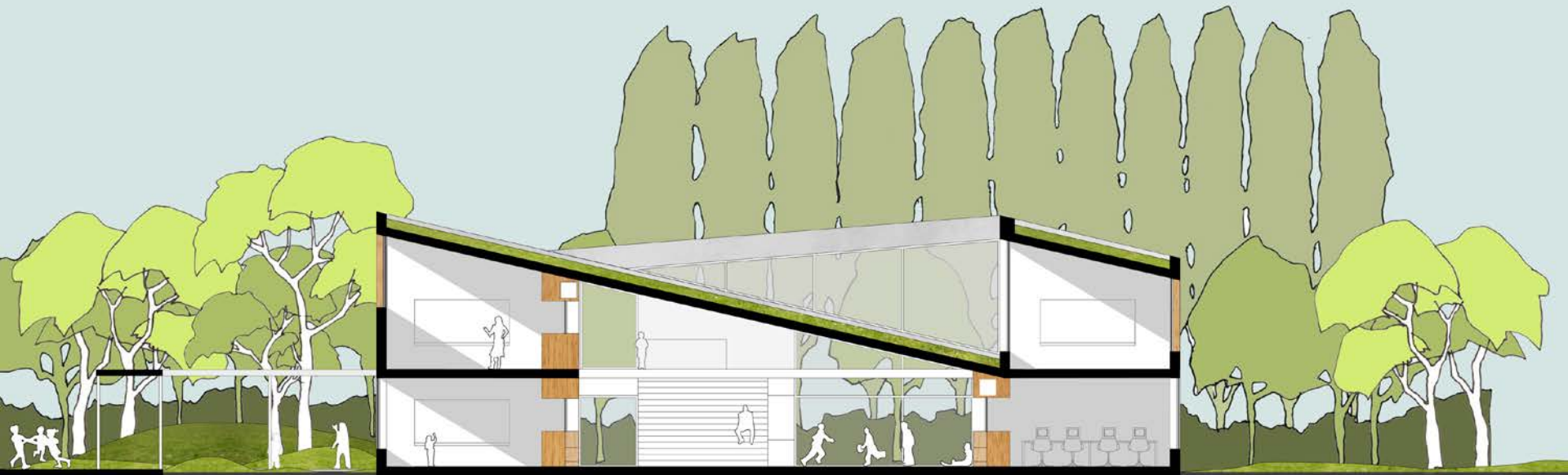


2 bouwlagen
770 m²













A

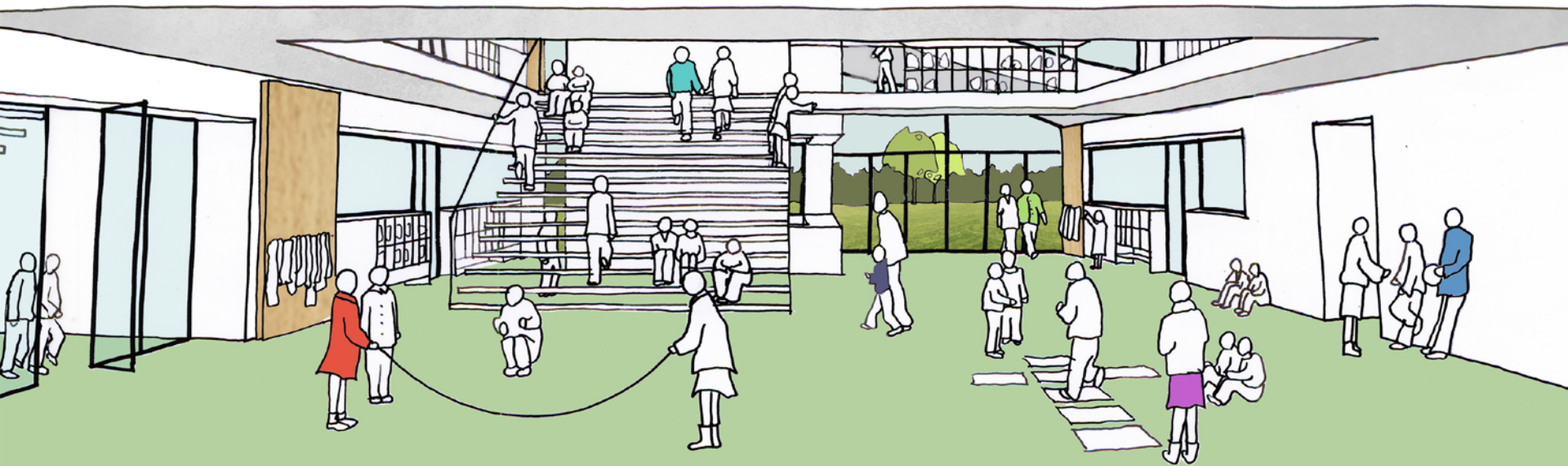
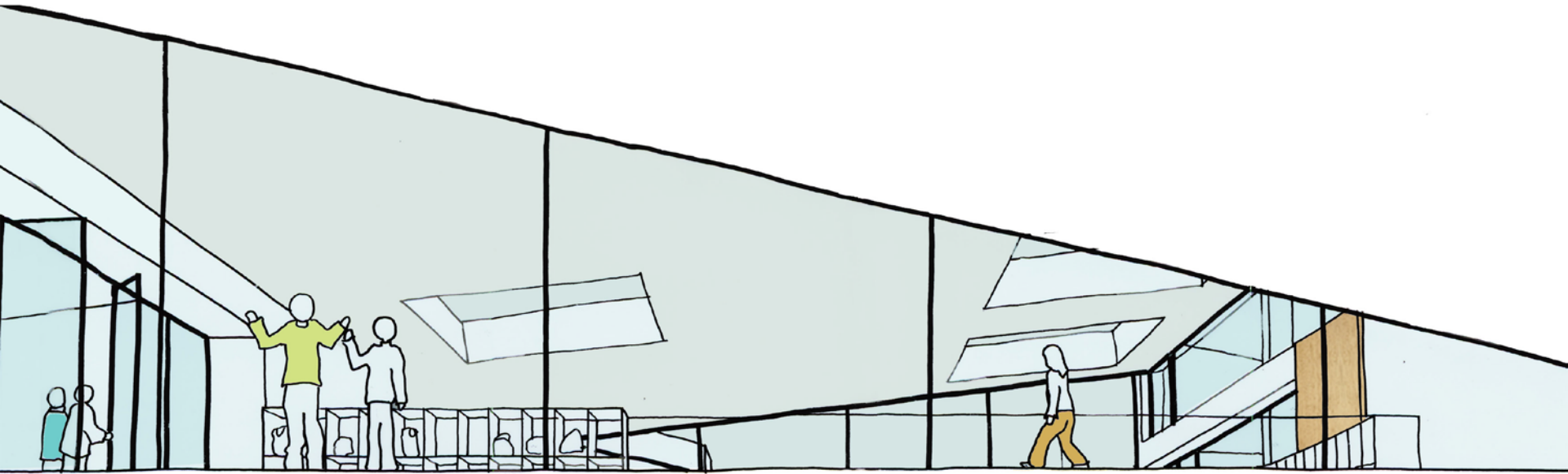
B

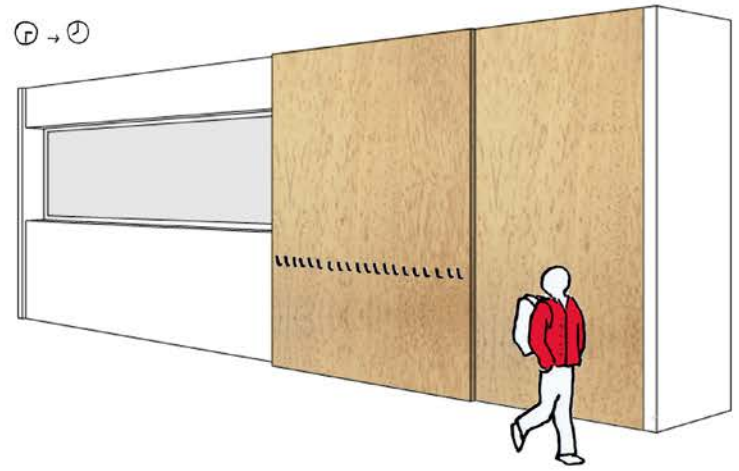
C

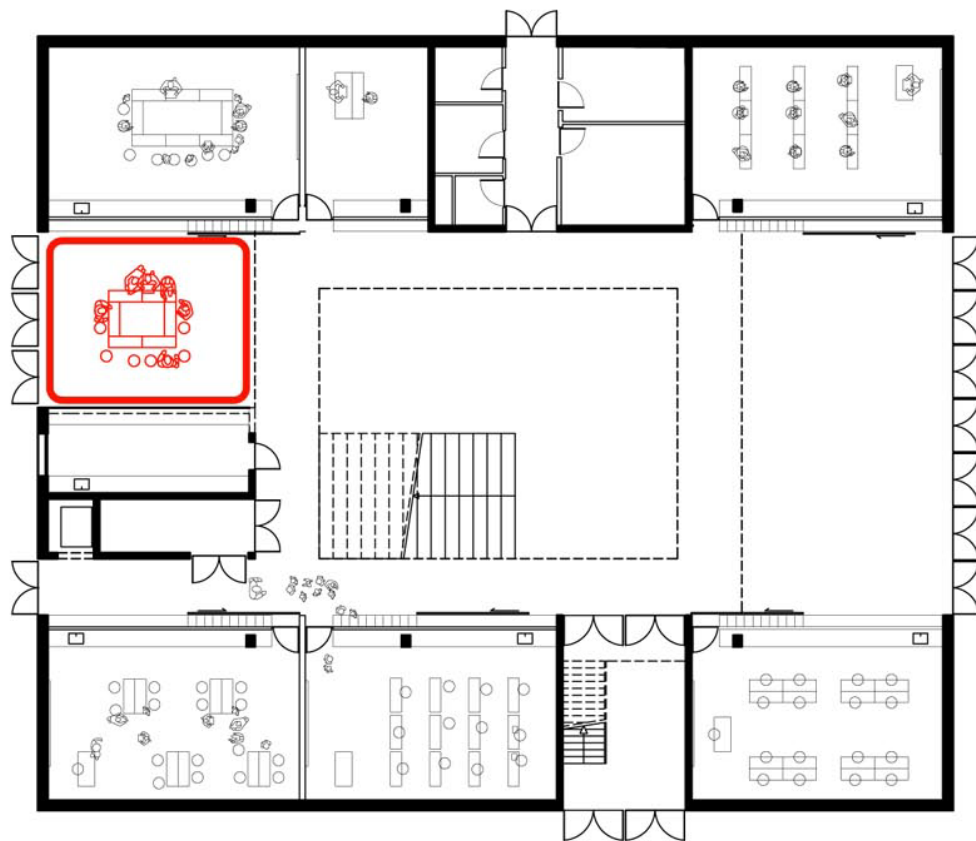
A

B

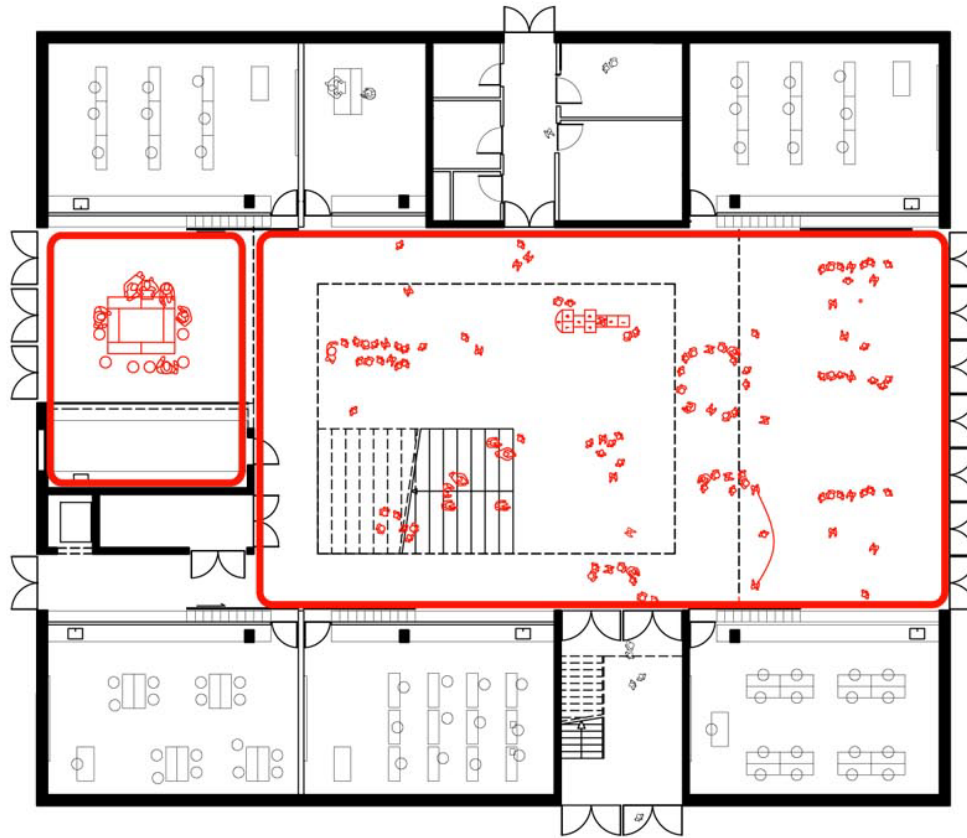
C



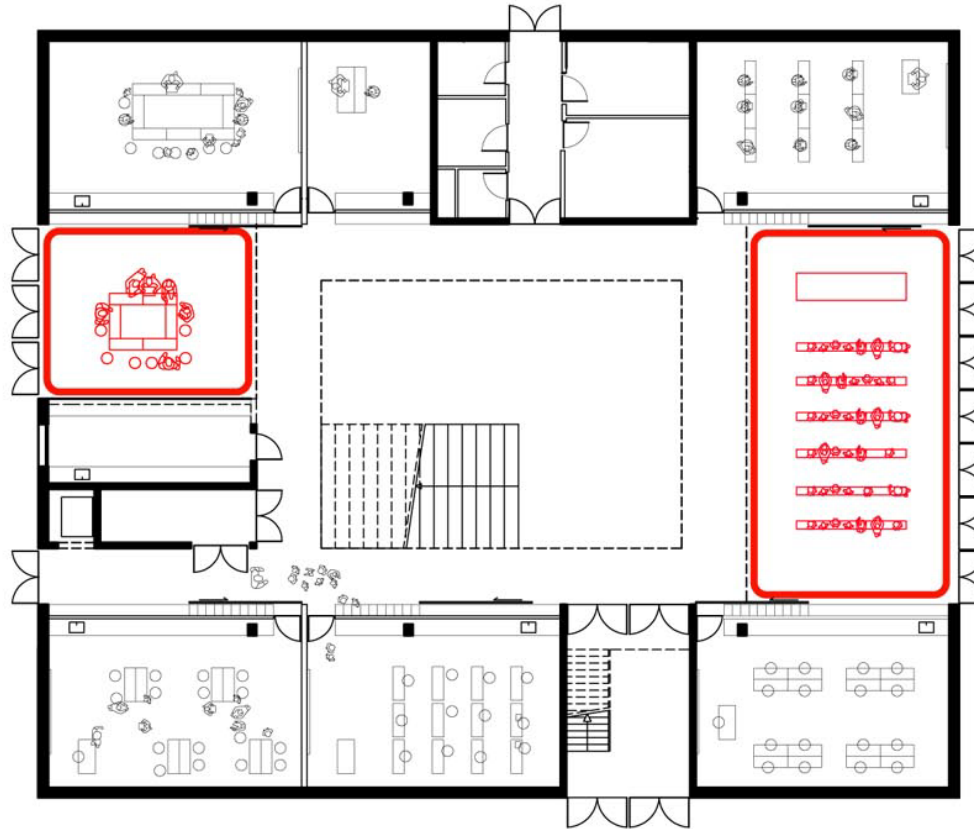




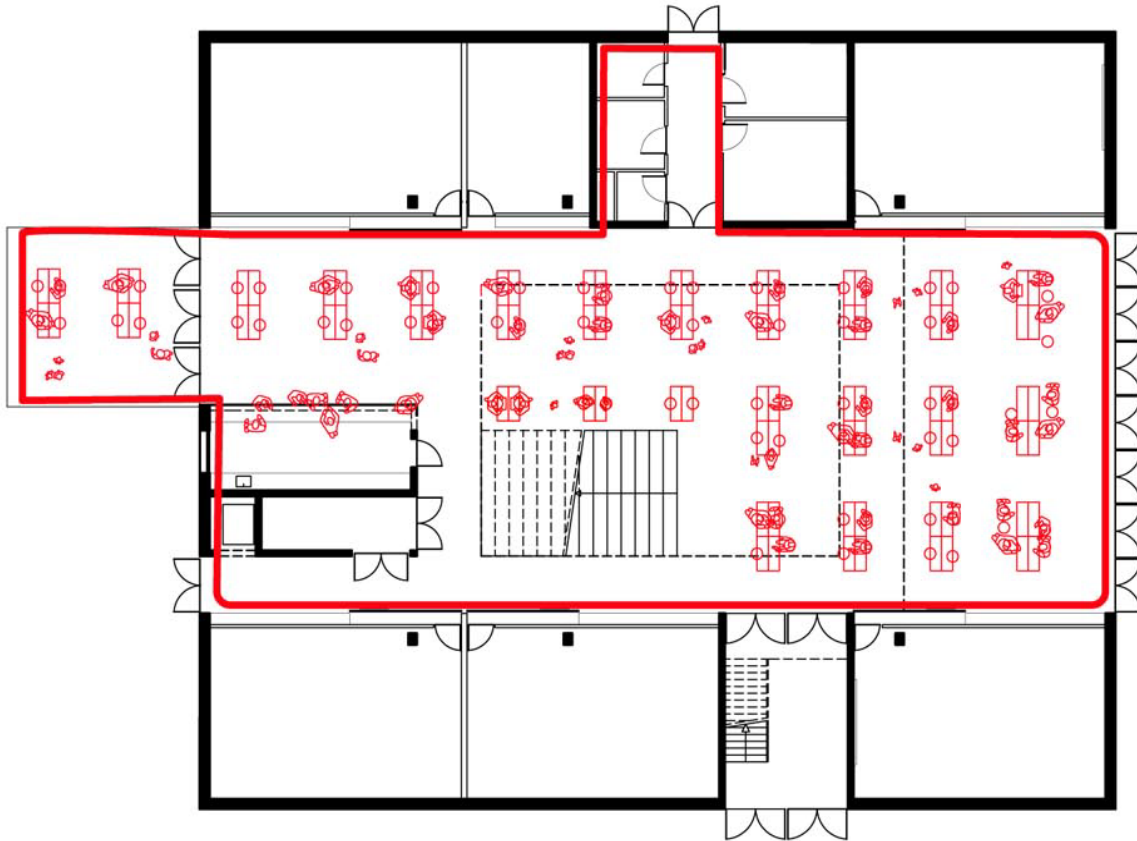
EXTRA KLAS 50 M2



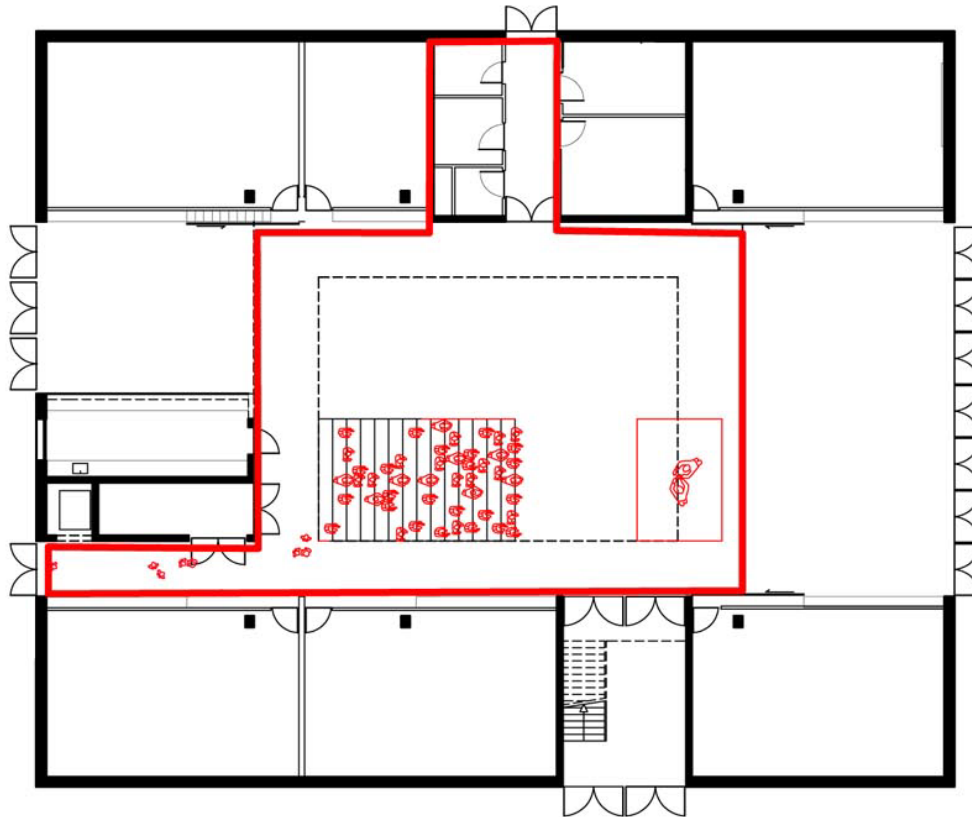
KOFFIEREFTER 60 M2 + OVERDEKTE SPEELPLAATS 320 M2



VERGADERING 50 M2 + FILMVOORSTELLING 90 M2



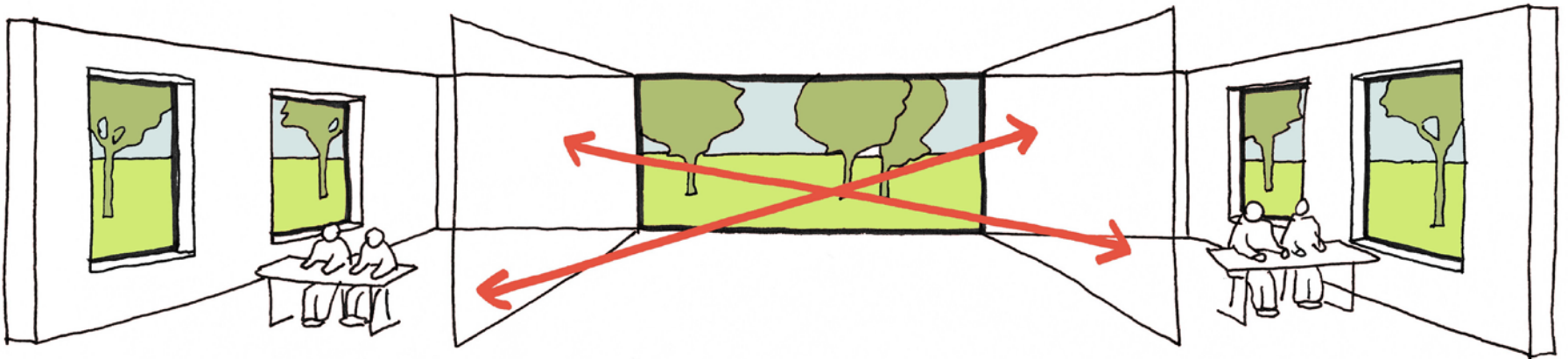
EETDAG VOETBAL 400 M2

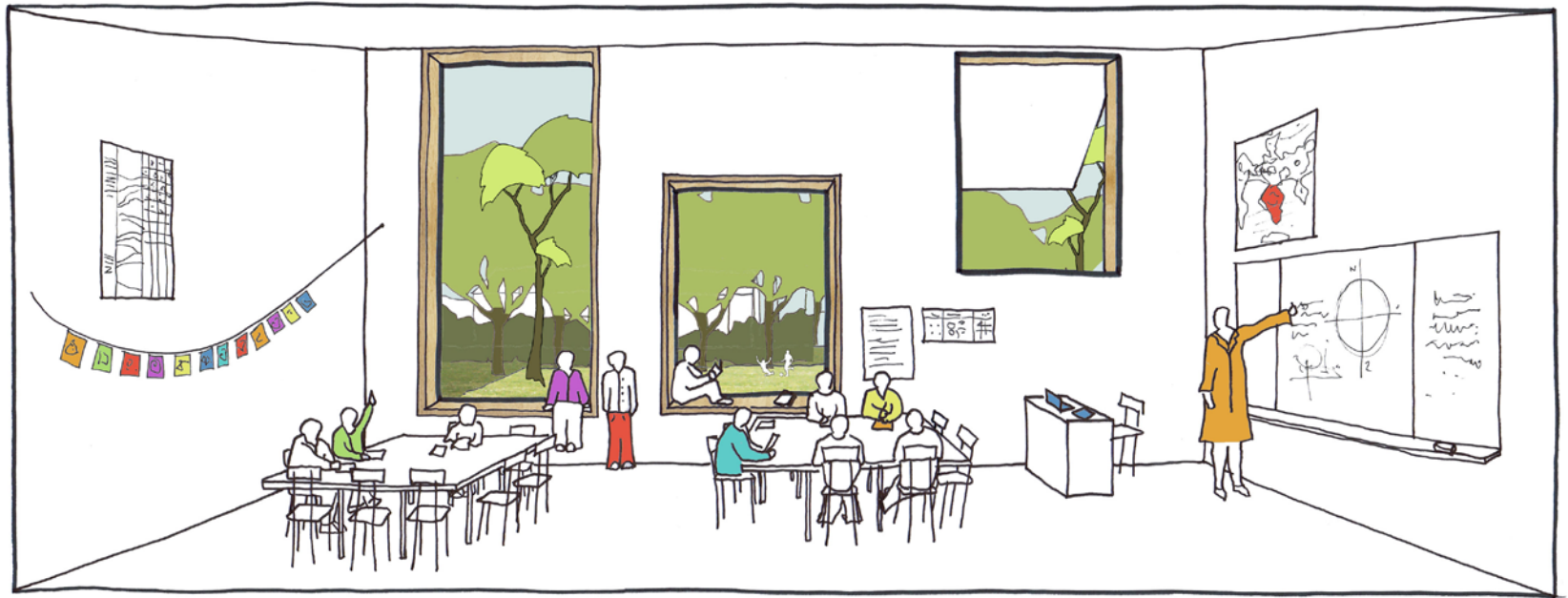


VRIJ PODIUM 230 M2

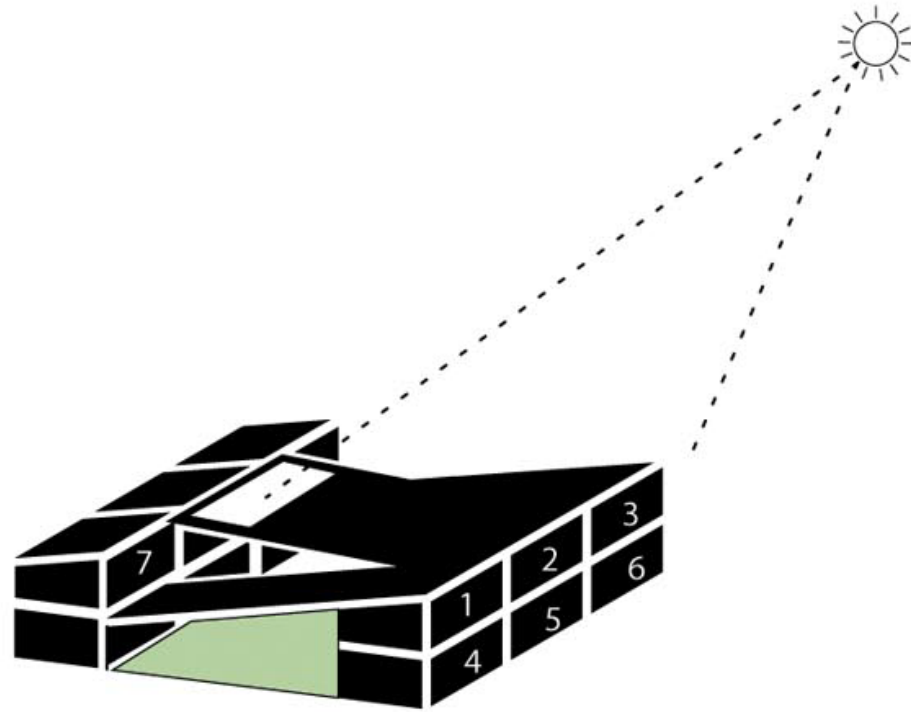


BREILES / COMPUTERKLAS + KIENAVOND





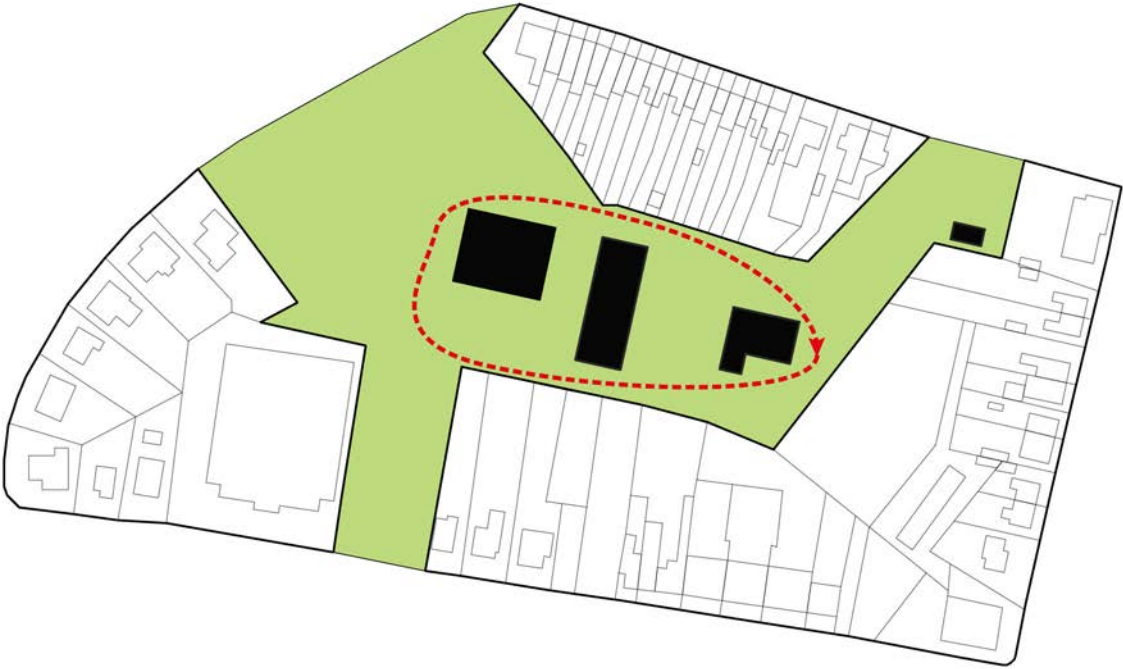






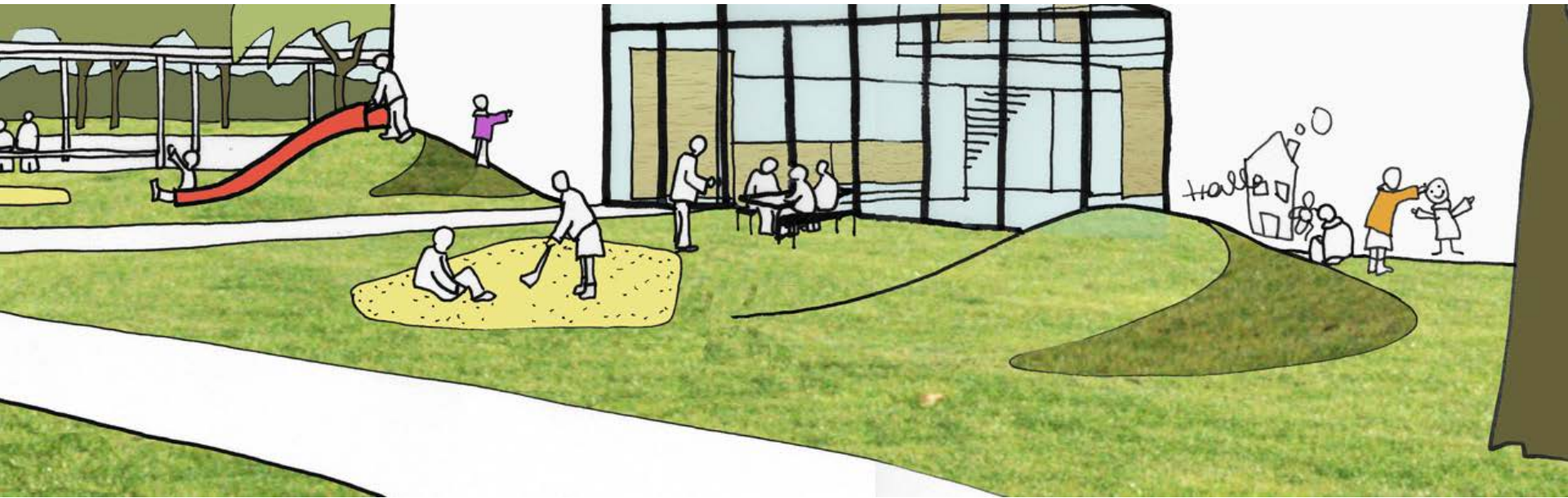
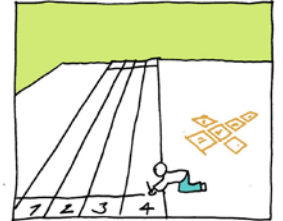
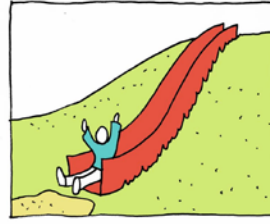
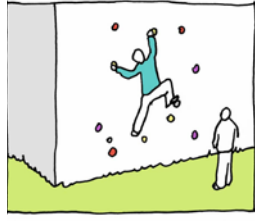
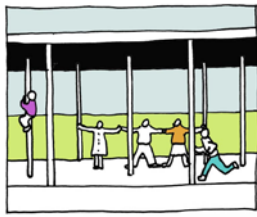
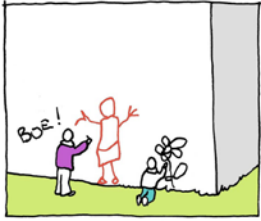


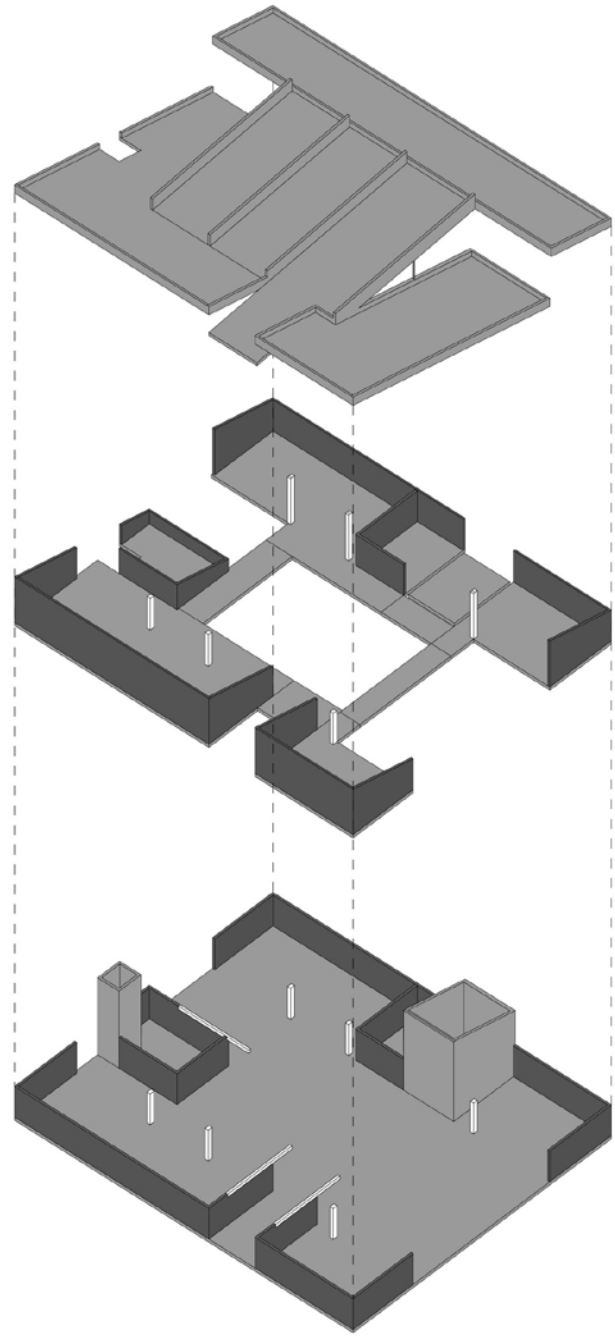


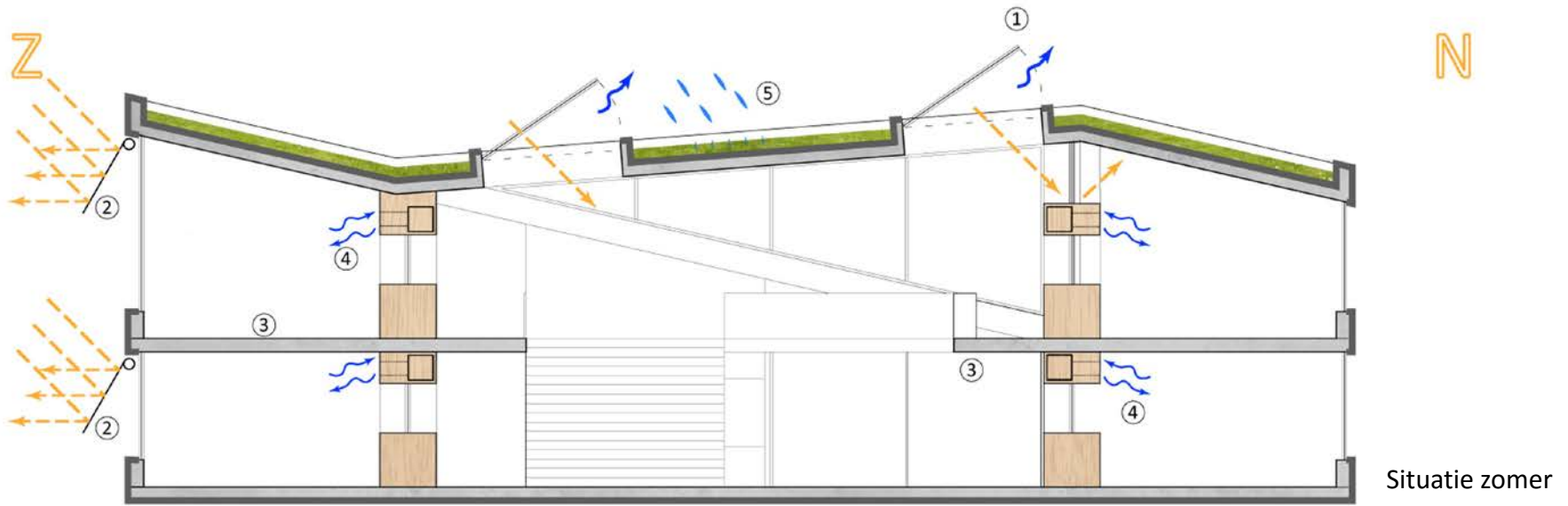












EVALUATIE BESTAANDE TOESTAND	EVALUATIE SITE	VOORONTWERP	DEFINITIEF ONTWERP	STEDENBOUWKUNDIGE VERGUNNINGEN	UITVOERINGSDOSSIER	VOORLOPIGE OPLEVERING
fase 0	fase 1	fase 2	fase 3	fase 4	fase 5	fase 6

Hoofdstukken

							1. Geïntegreerd projectproces
0	0	70	0	0	0	0	2. Inplanting
80	54	80	80	80	80	80	
0%	0%	88%	0%	0%	0%	0%	
0	0	45	0	0	0	0	3. Mobiliteit
52	0	52	52	52	52	52	
0%		87%	0%	0%	0%	0%	
0	0	44	0	0	0	0	4. Natuurlijk milieu
52	0	52	52	52	52	52	
0%		85%	0%	0%	0%	0%	
0	0	22	0	0	0	0	5. Water
28	0	28	28	28	28	28	
0%		79%	0%	0%	0%	0%	
0	0	20	0	0	0	0	6. Grondstoffen en afval
28	0	28	28	28	28	28	
0%		71%	0%	0%	0%	0%	
0	0	57	0	0	0	0	7. Energie
80	0	80	80	80	80	80	
0%		71%	0%	0%	0%	0%	
0	0	48	0	0	0	0	8. Gezondheid, leefbaarheid en toegankelijkheid
52	0	52	52	52	52	52	
0%		92%	0%	0%	0%	0%	
0	0	24	0	0	0	0	9. Samenleving en economie
28	0	28	28	28	28	28	
0%		86%	0%	0%	0%	0%	
0	0	30	0	0	0	0	10. Innovatie
40	0	40	40	40	40	40	
0	0	330	0	0	0	0	TOTALE SCORE
400	54	400	400	400	400	400	
0%	0%	83%	0%	0%	0%	0%	

een duurzame schakelschool door ...



maximaal inzetten op die maatregelen die minst wegen op bouwkost:

- inplanting op het terrein
- oriëntatie
- compactheid



kiezen voor doorgedreven multifunctionaliteit, meer plan op dezelfde oppervlakte:

- klassen zijn los van de structuur herindeelbaar
- polyvalente zaal in meerdere formaten opdeelbaar



milieu-educatie op de site = toekomstige generaties in contact brengen met duurzaamheid



