



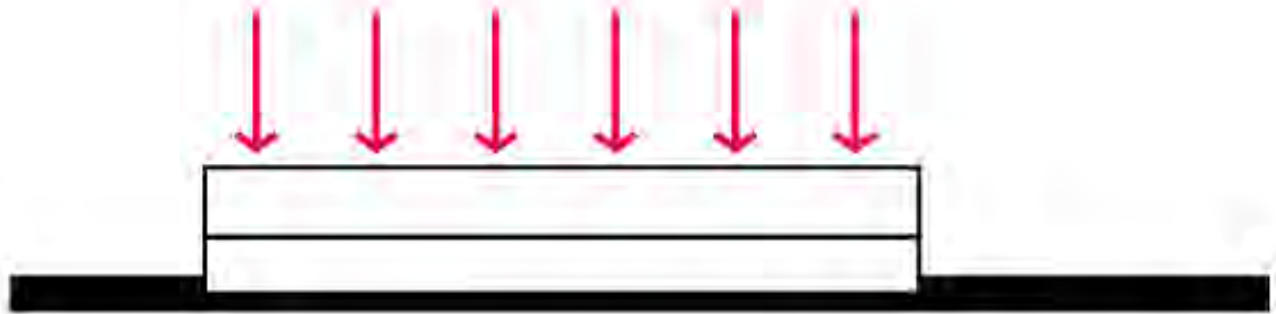
DE STERRETJES



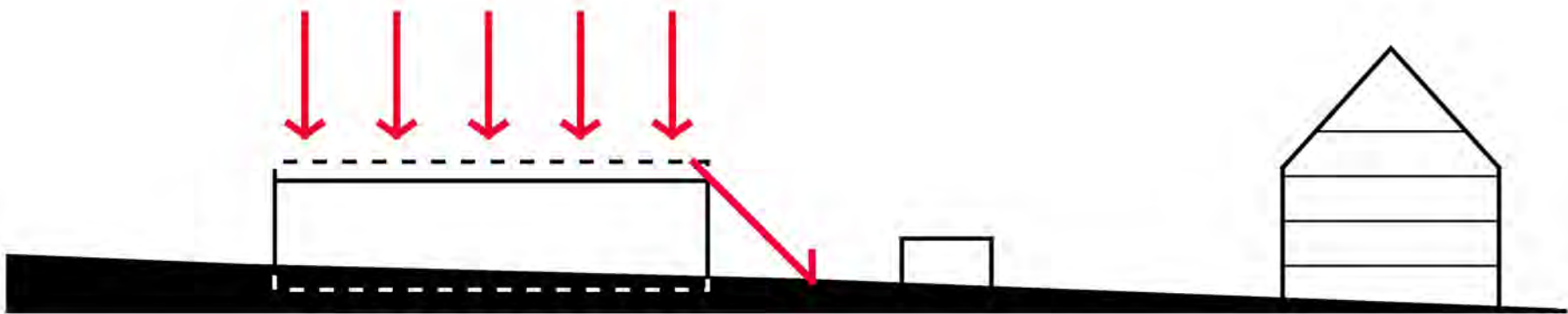


Het Gebouw





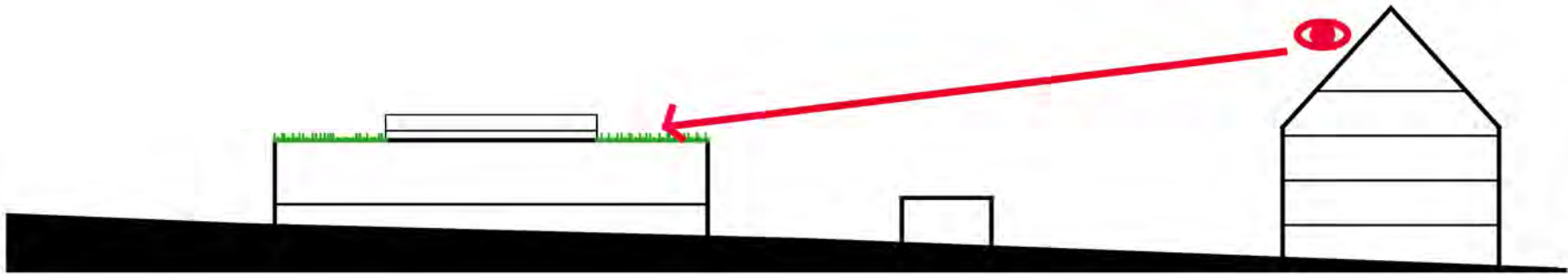
Verzinken gebouw



45 graden regel



Verdiepen voor toegankelijkheid



Groen dak

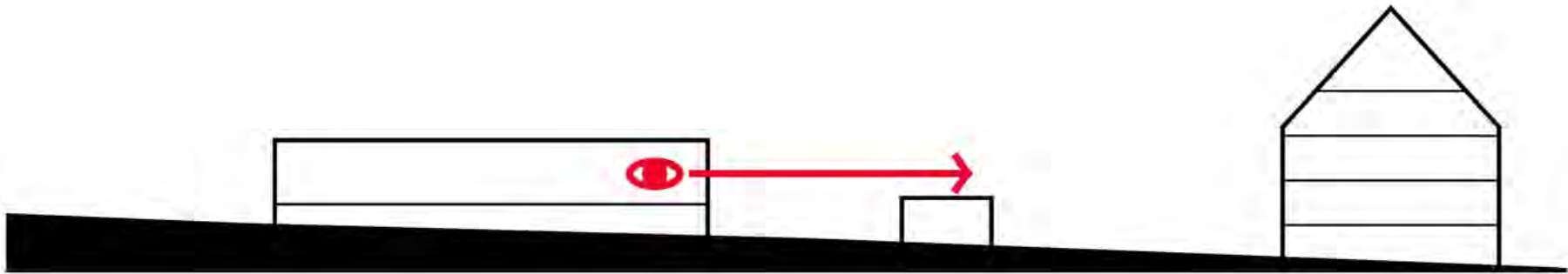




Transparantie

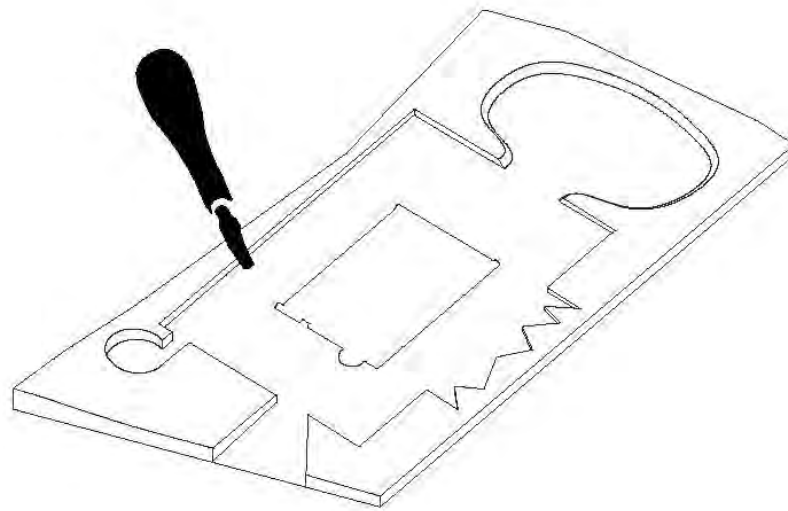


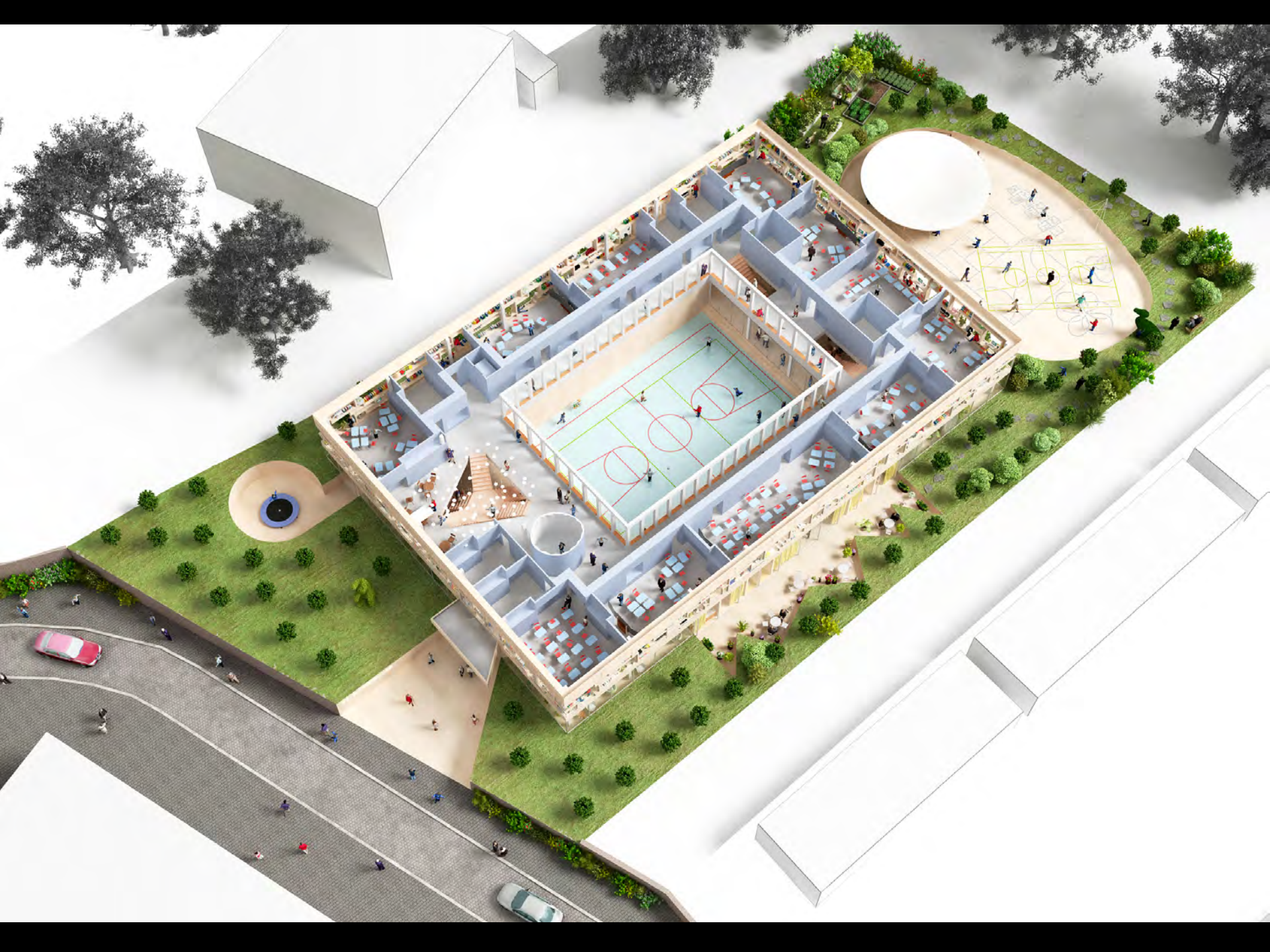
Gym als 'cour'

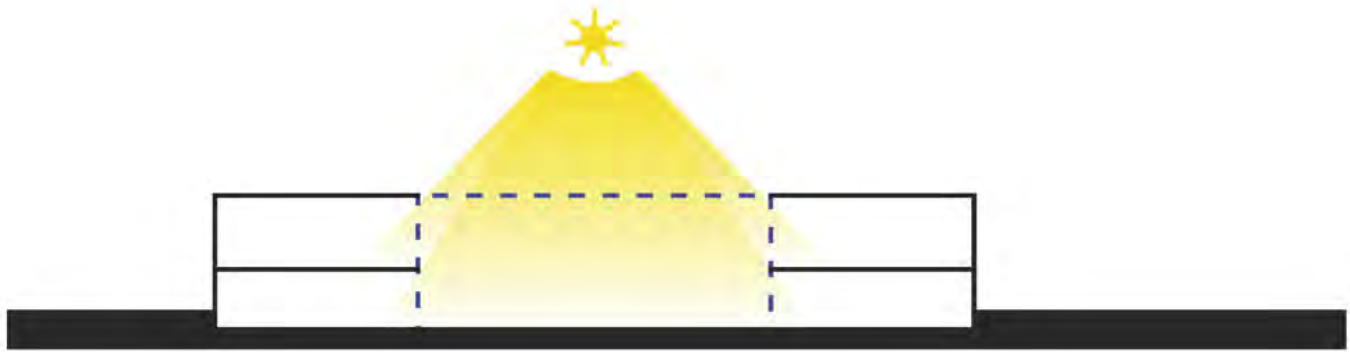


Zicht over garages

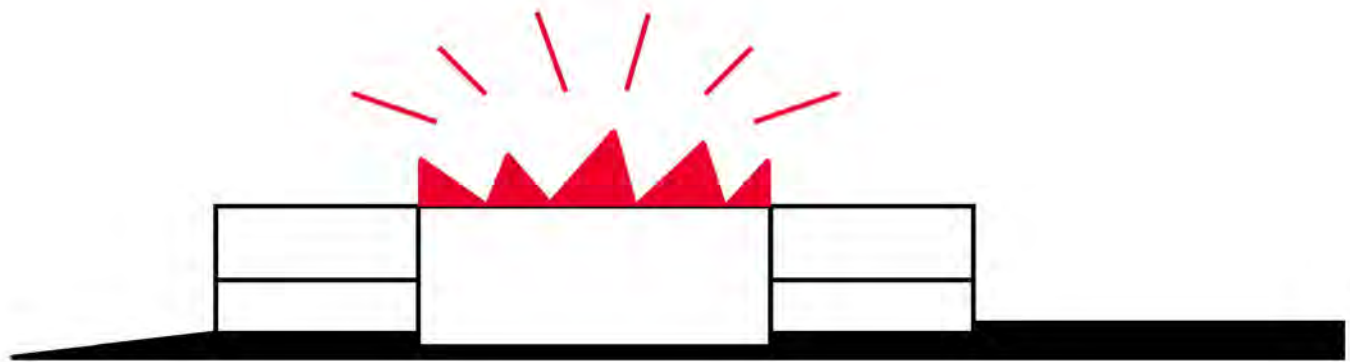






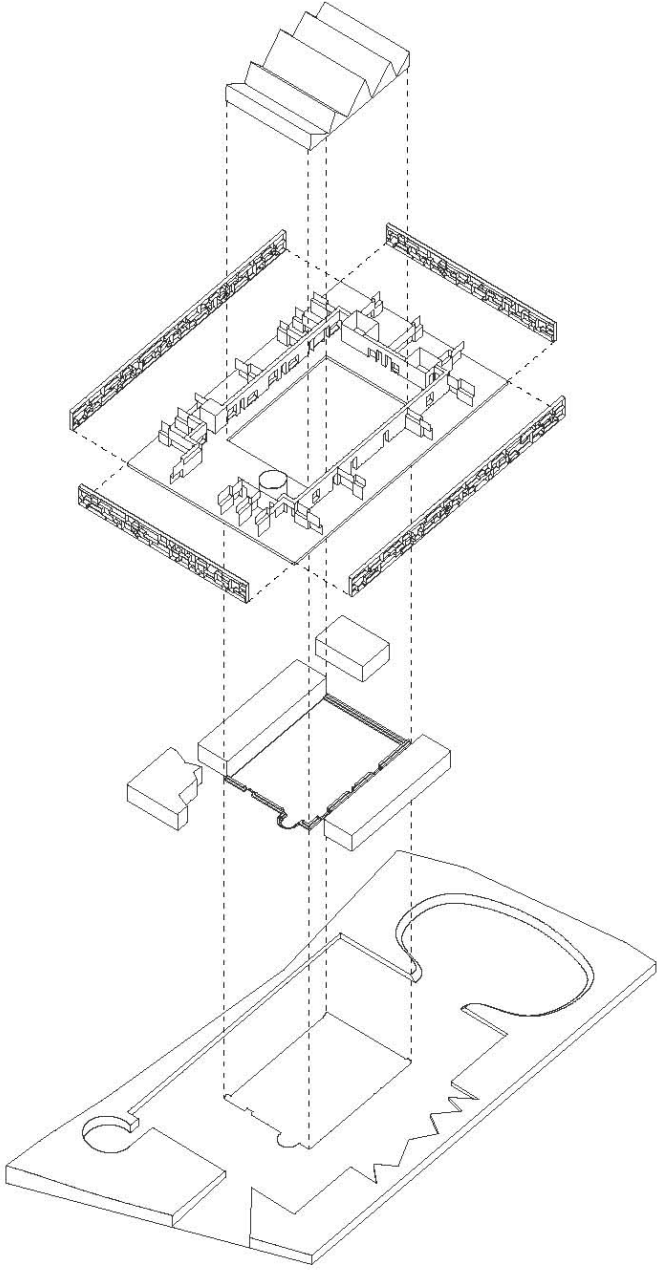


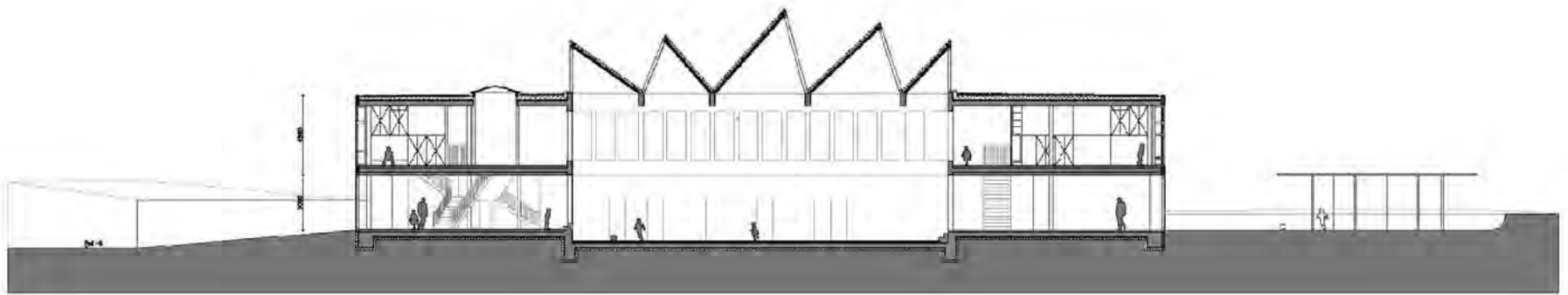
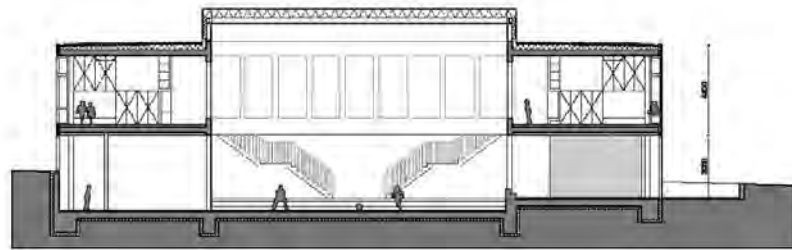
Daglicht in hart gebouw



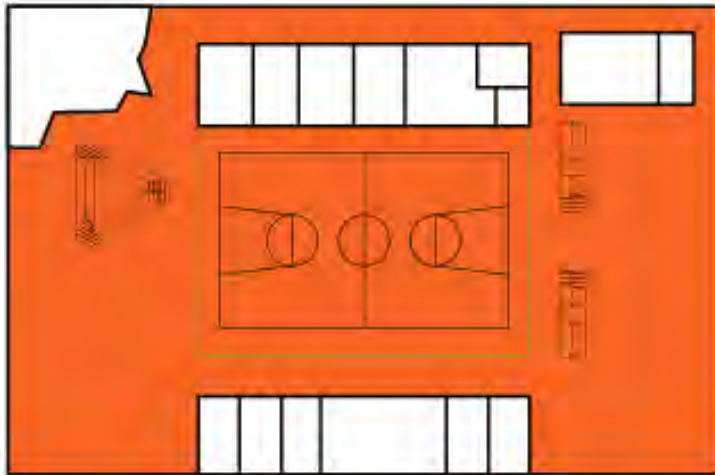
Sheddak als kroon



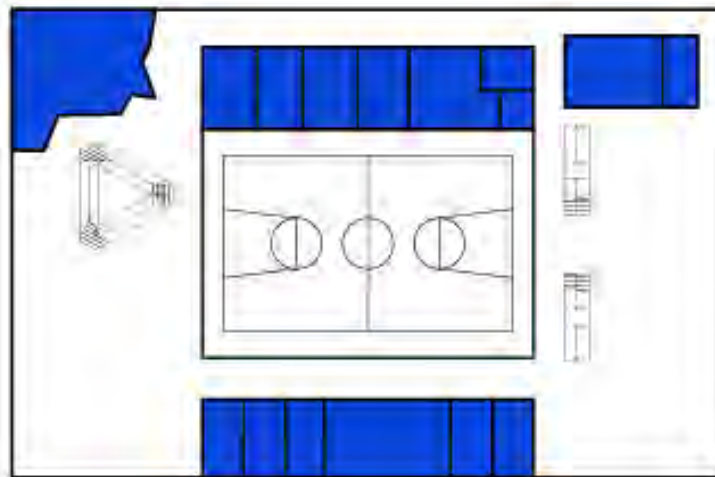




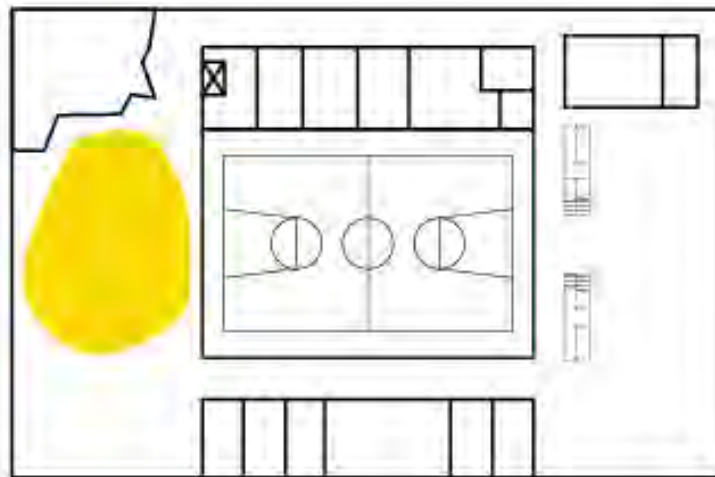
Begane grond



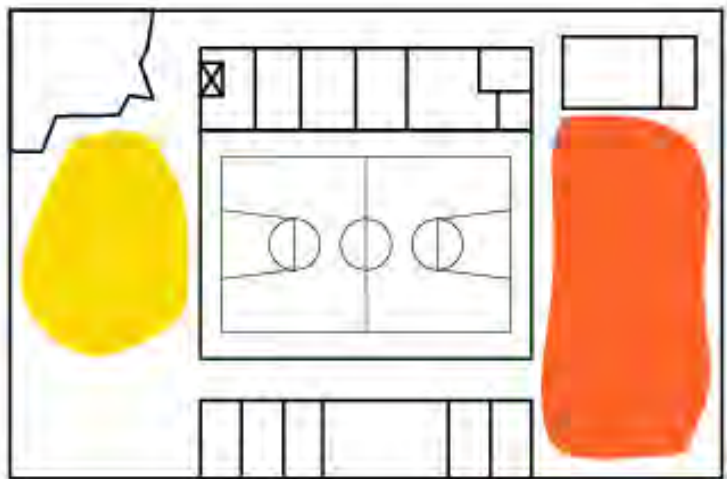
Open programma



Gesloten programma



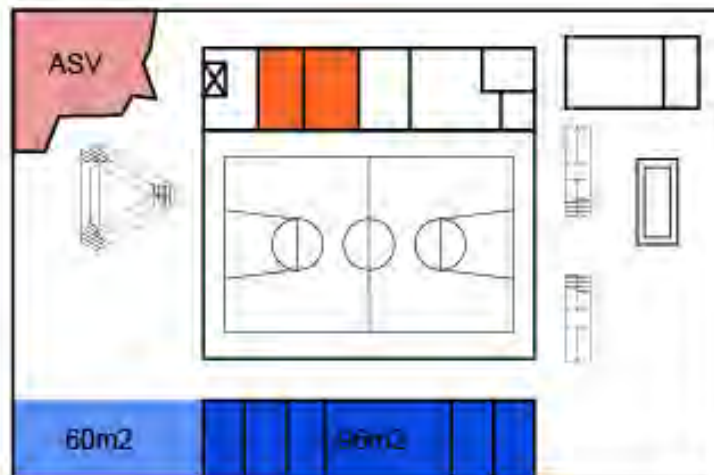
Entree



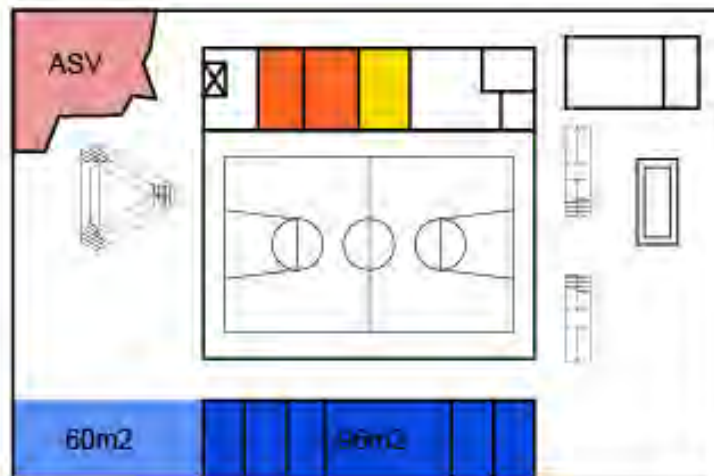


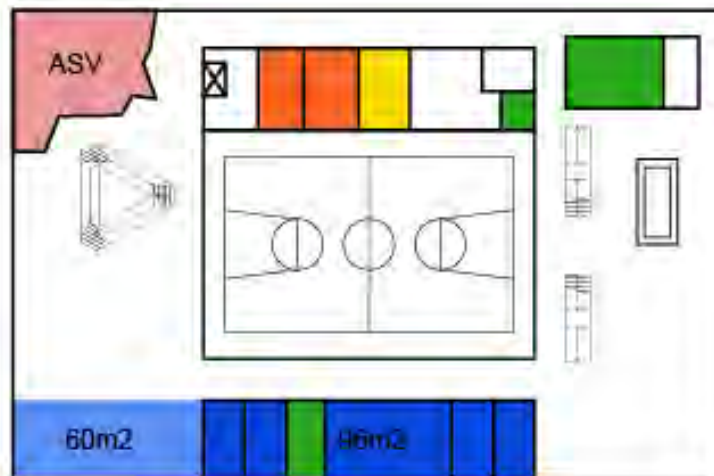
Administratie



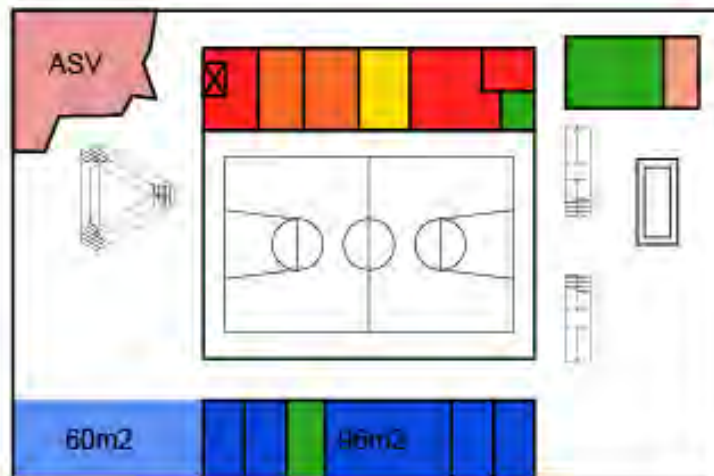


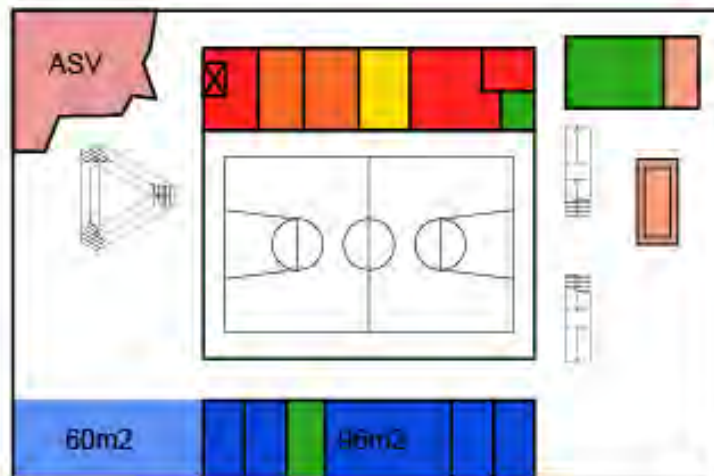
Kleedkamers



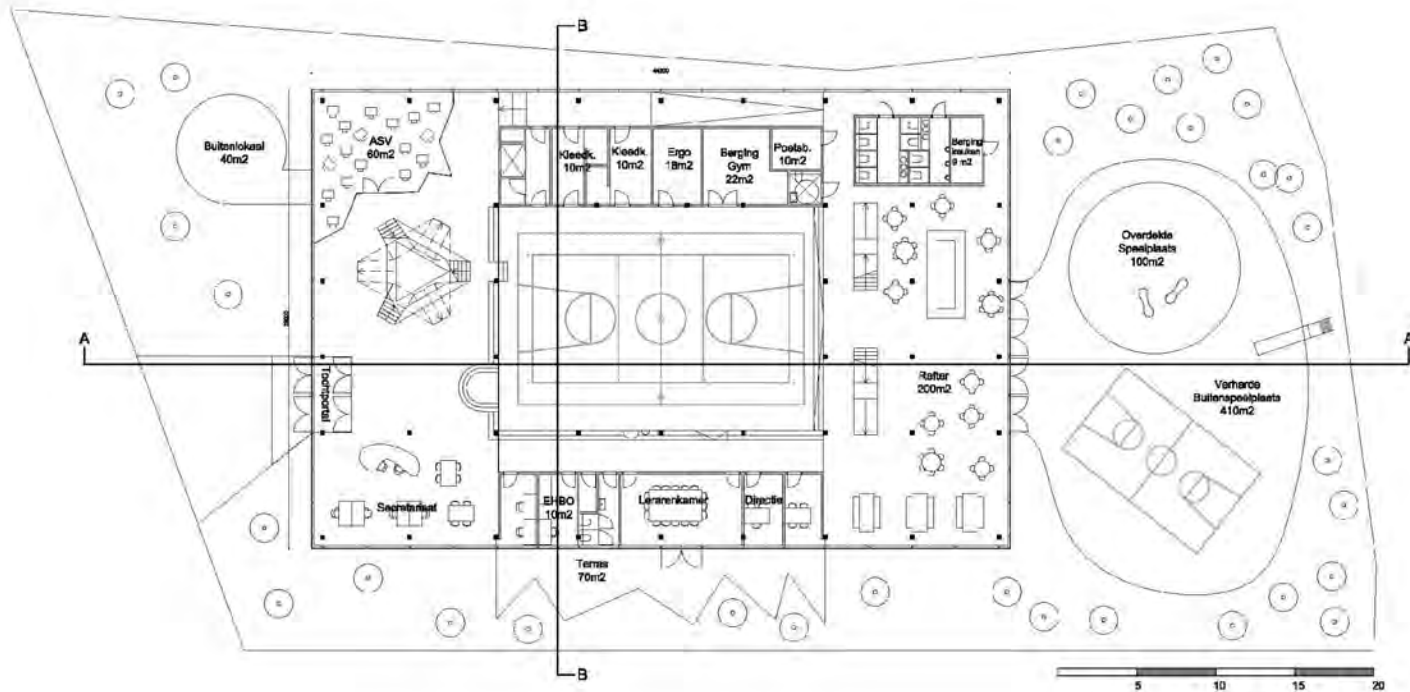


Toiletten





Keuken

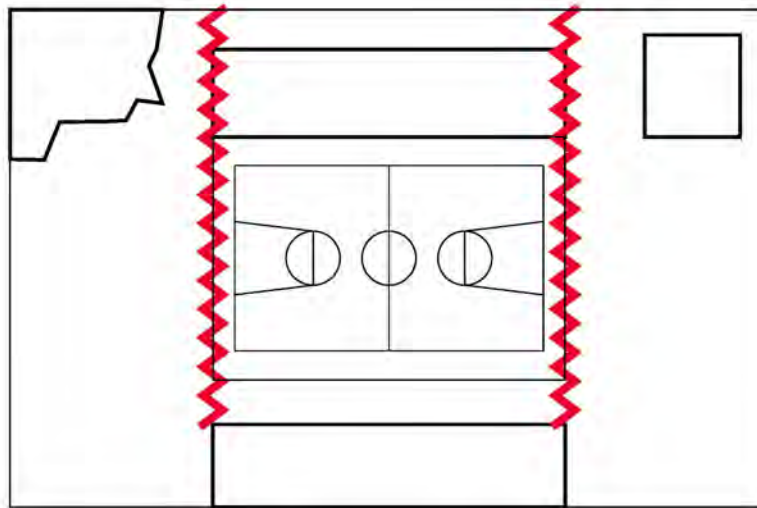


Begane grond

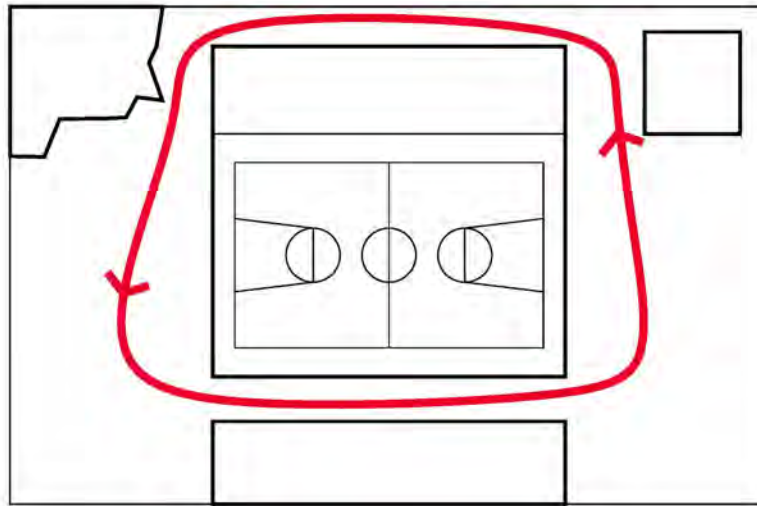




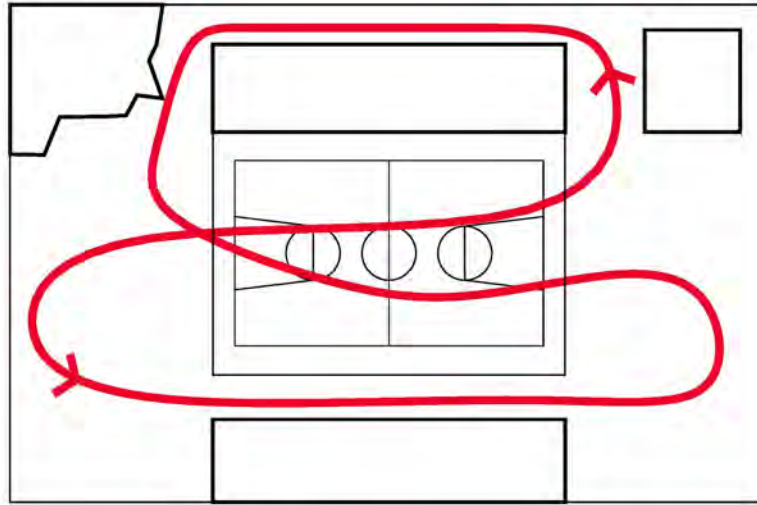




Vouwwanden



Circulatie bij gebruik turnzaal

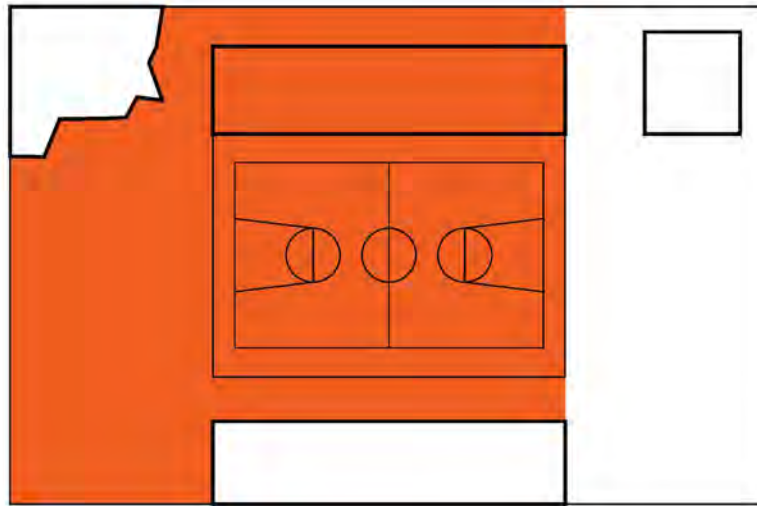


Open speellandschap

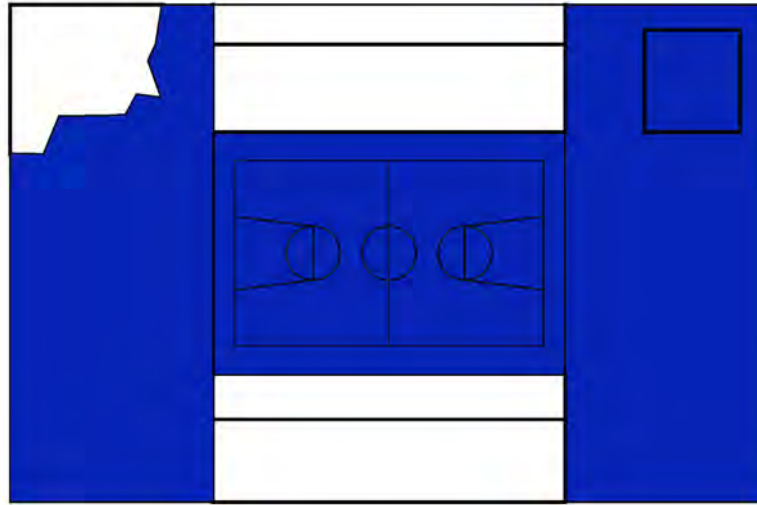
Cour, Turnzaal, Speellandschap







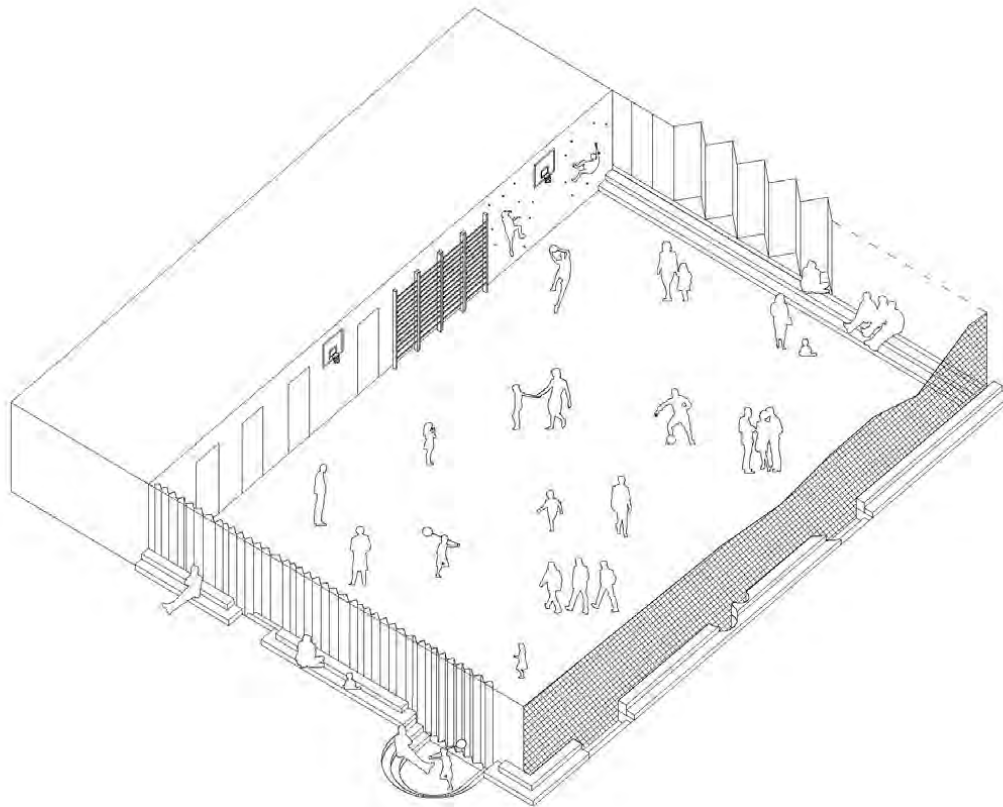
Verhuur turnzaal



Avondgebruik





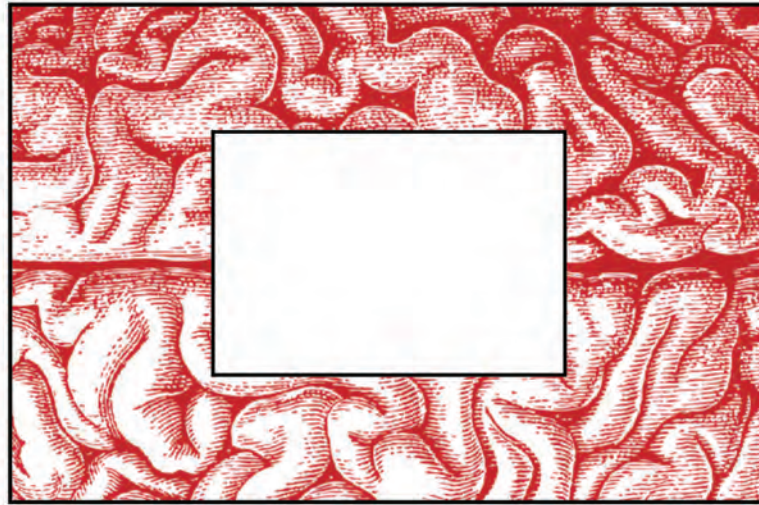


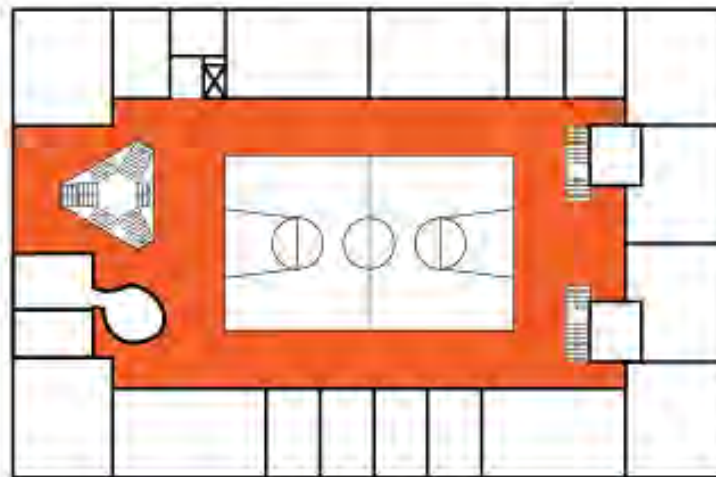
Geprogrammeerde randen



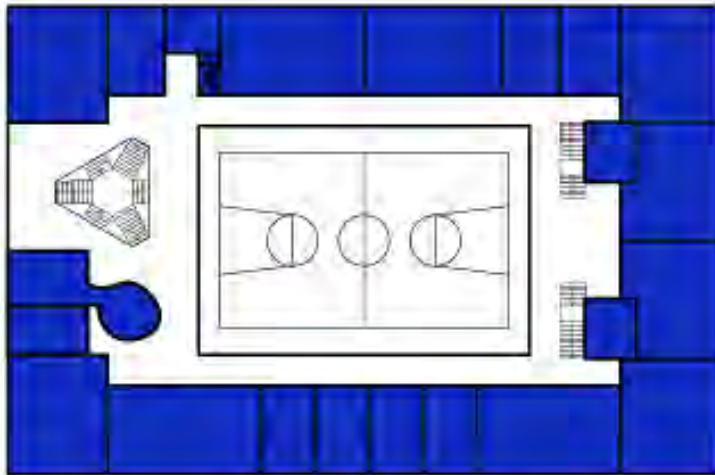


Bovenverdieping

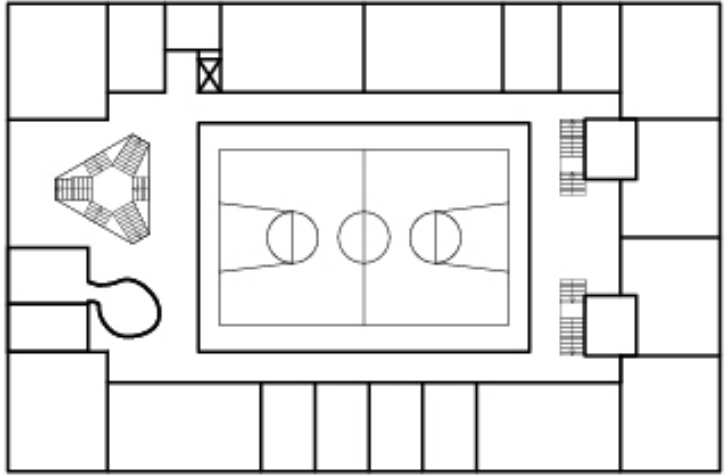


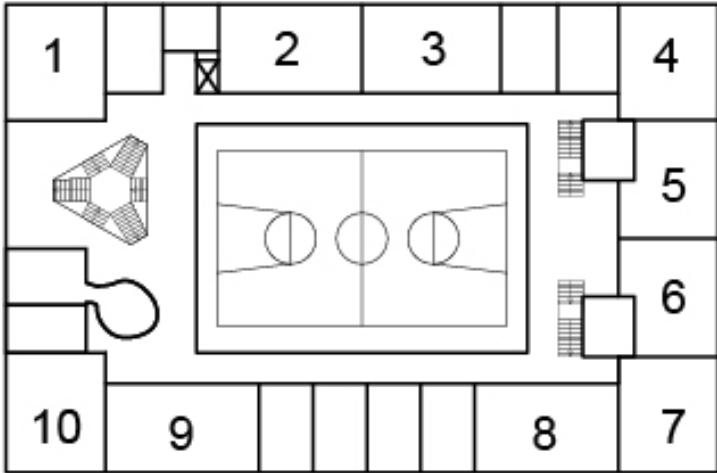


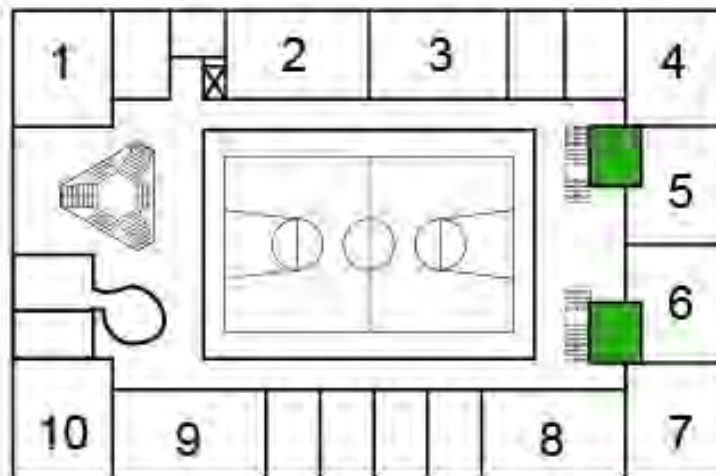
Open programma



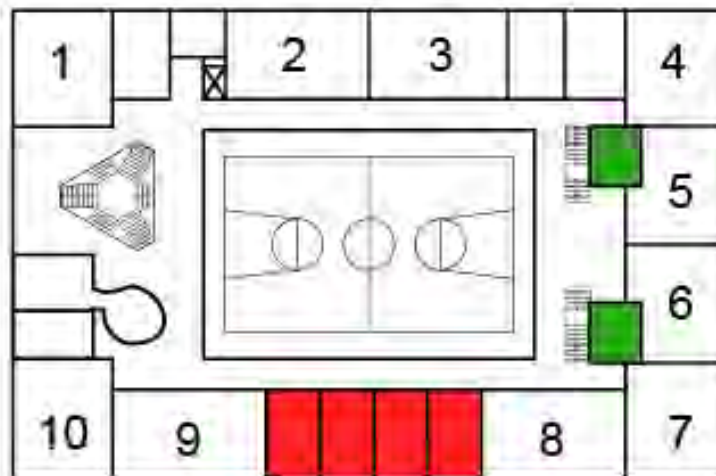
Gesloten programma

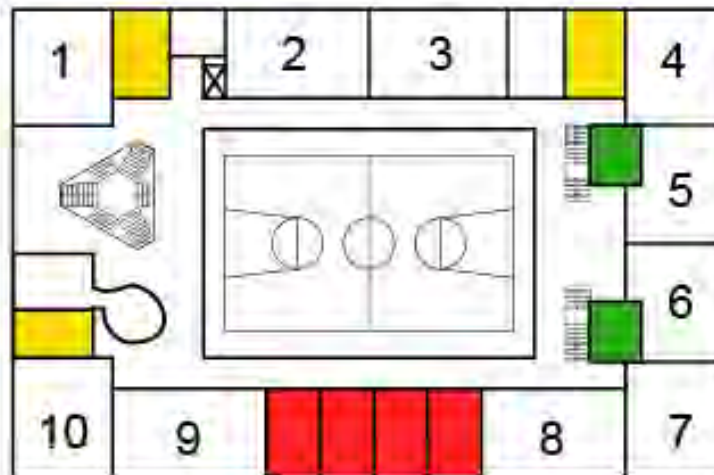


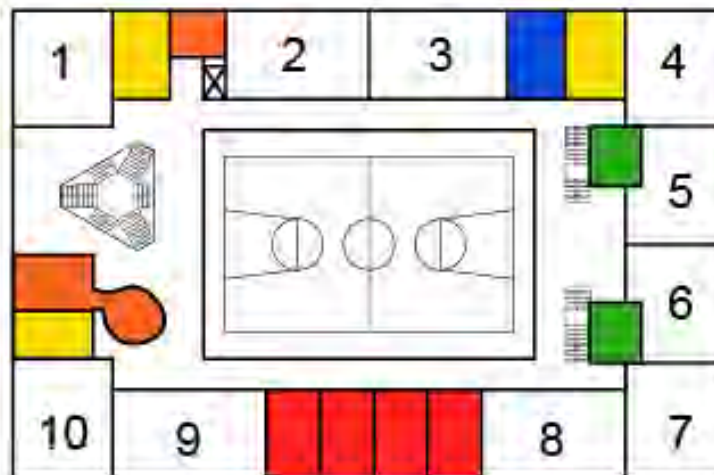




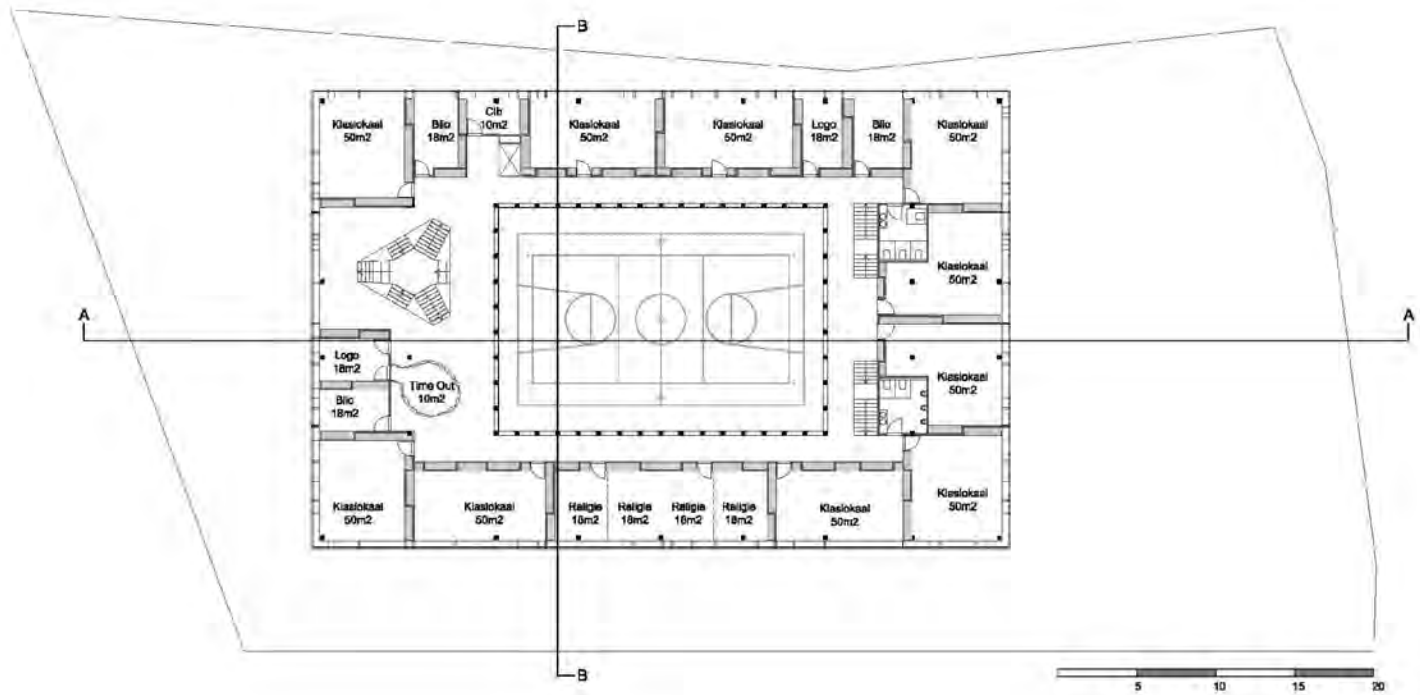
Toiletten





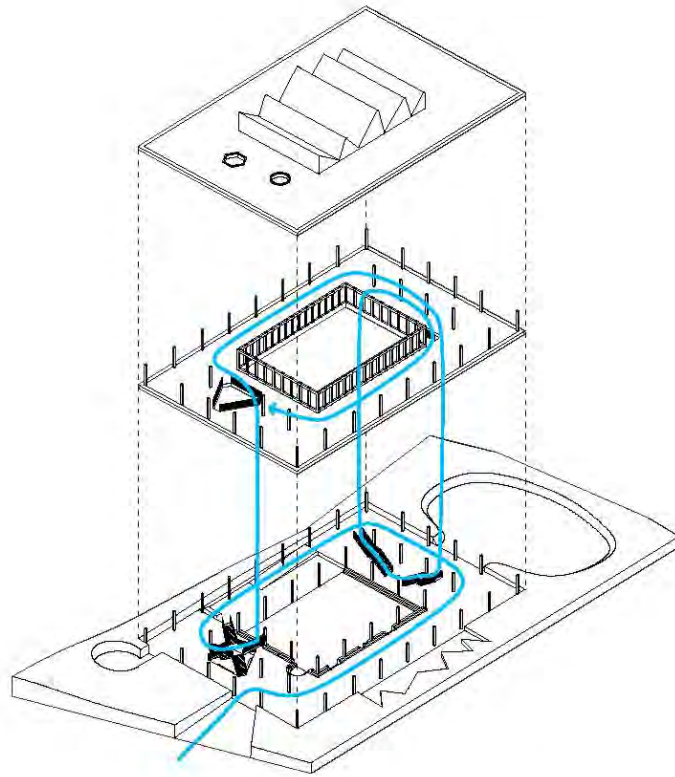


Time out, CLB, logopedie



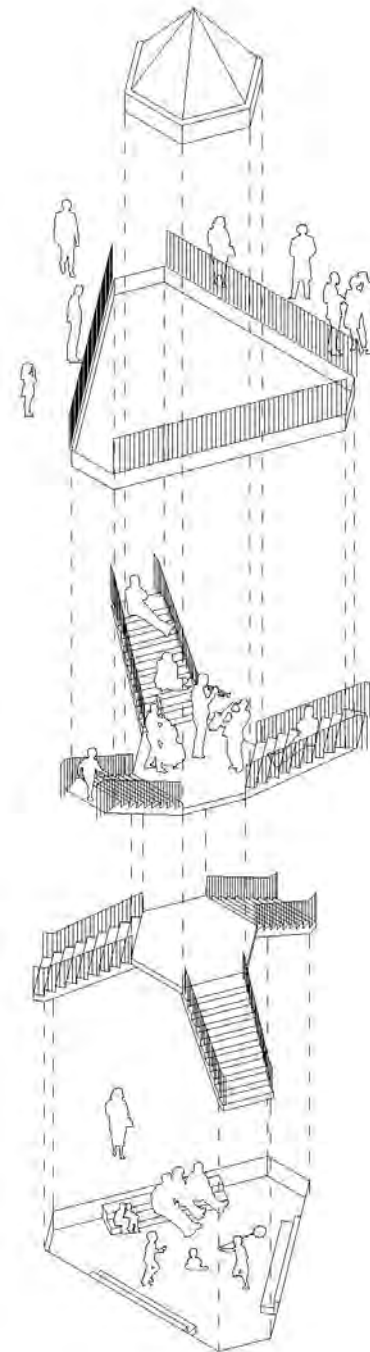
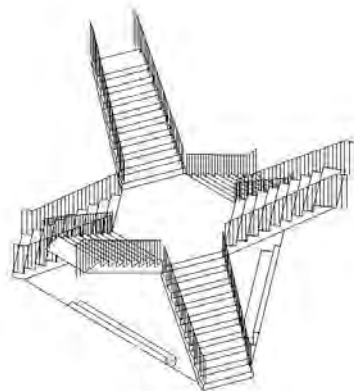
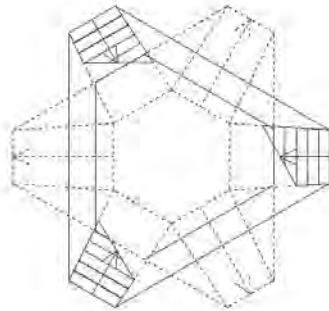
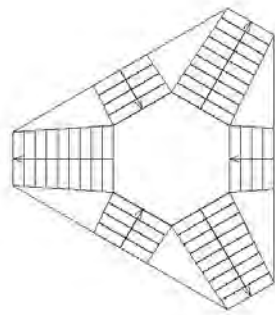
Verdieping

Circulatie



Circulatie



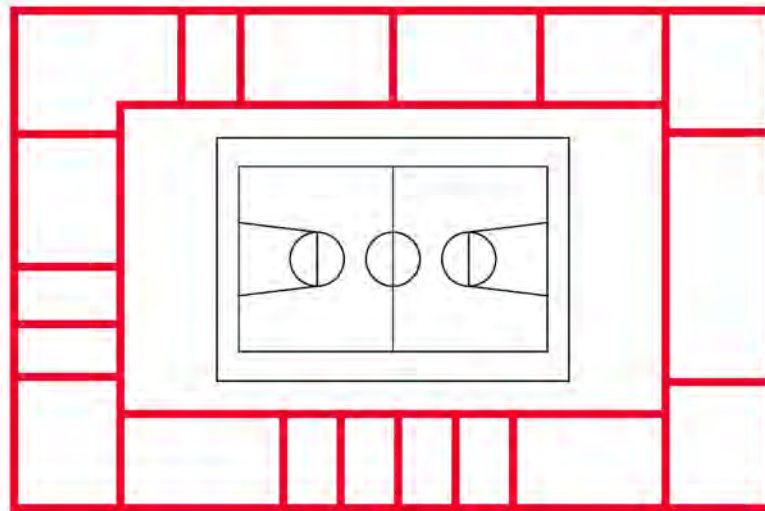


Star stairs

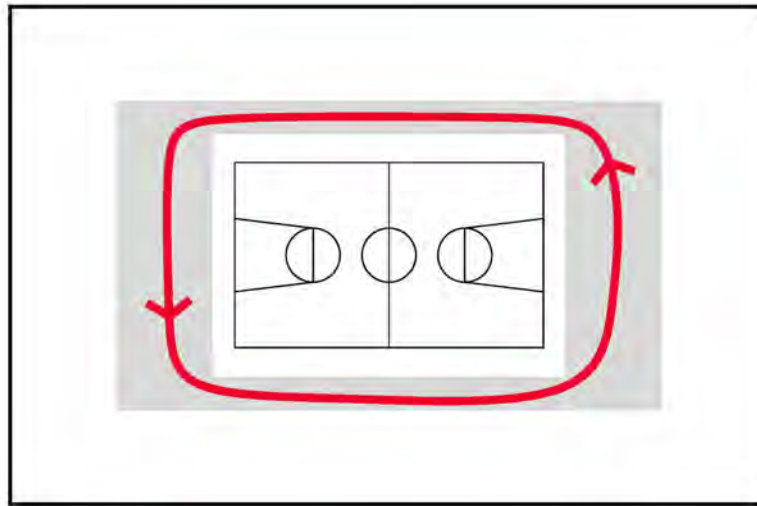


Rondgang

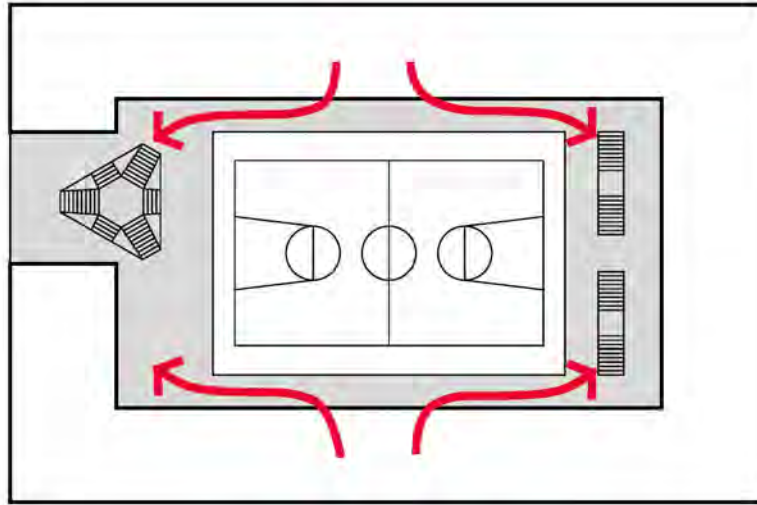




Klaslokalen rond vide

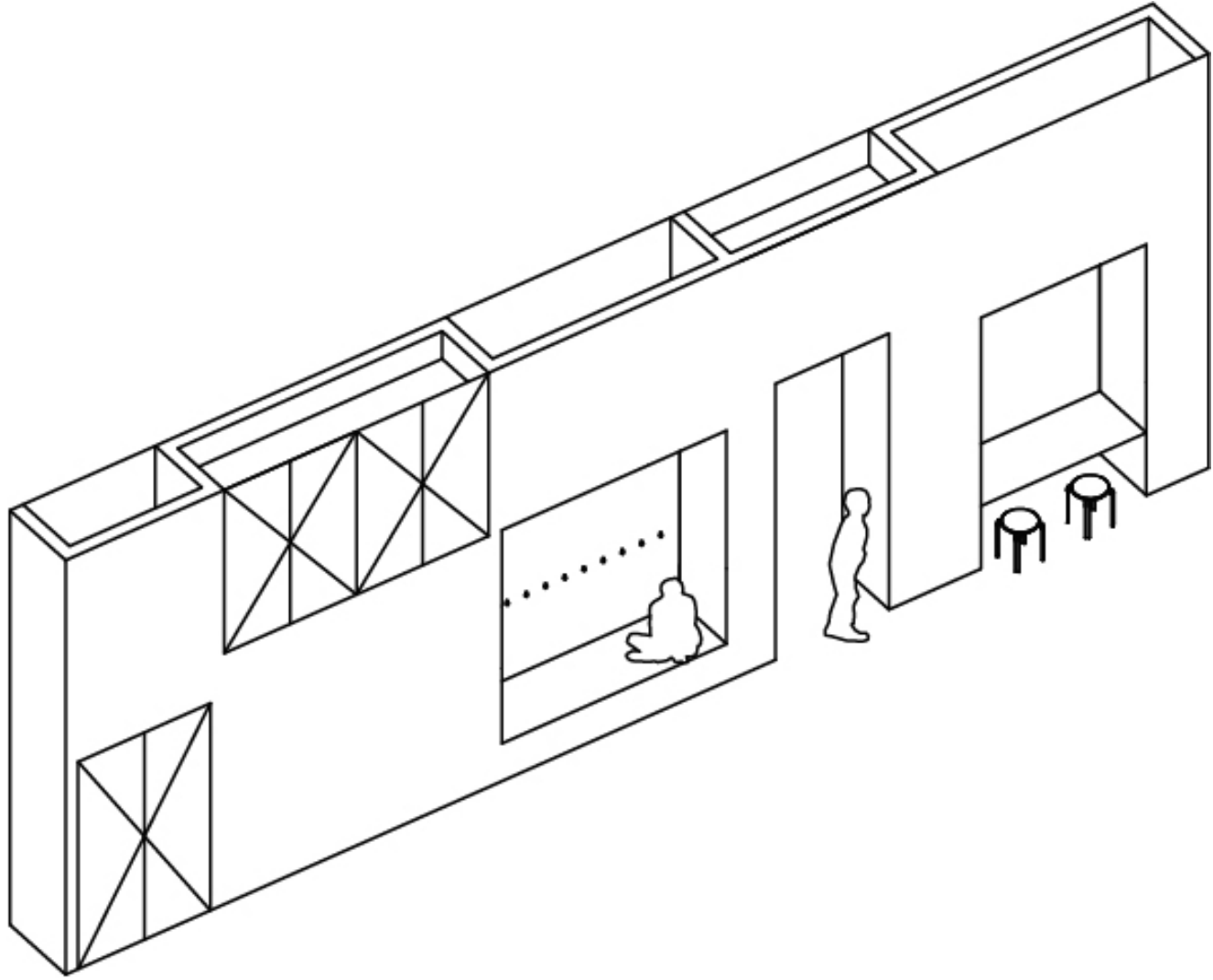


Circulatie



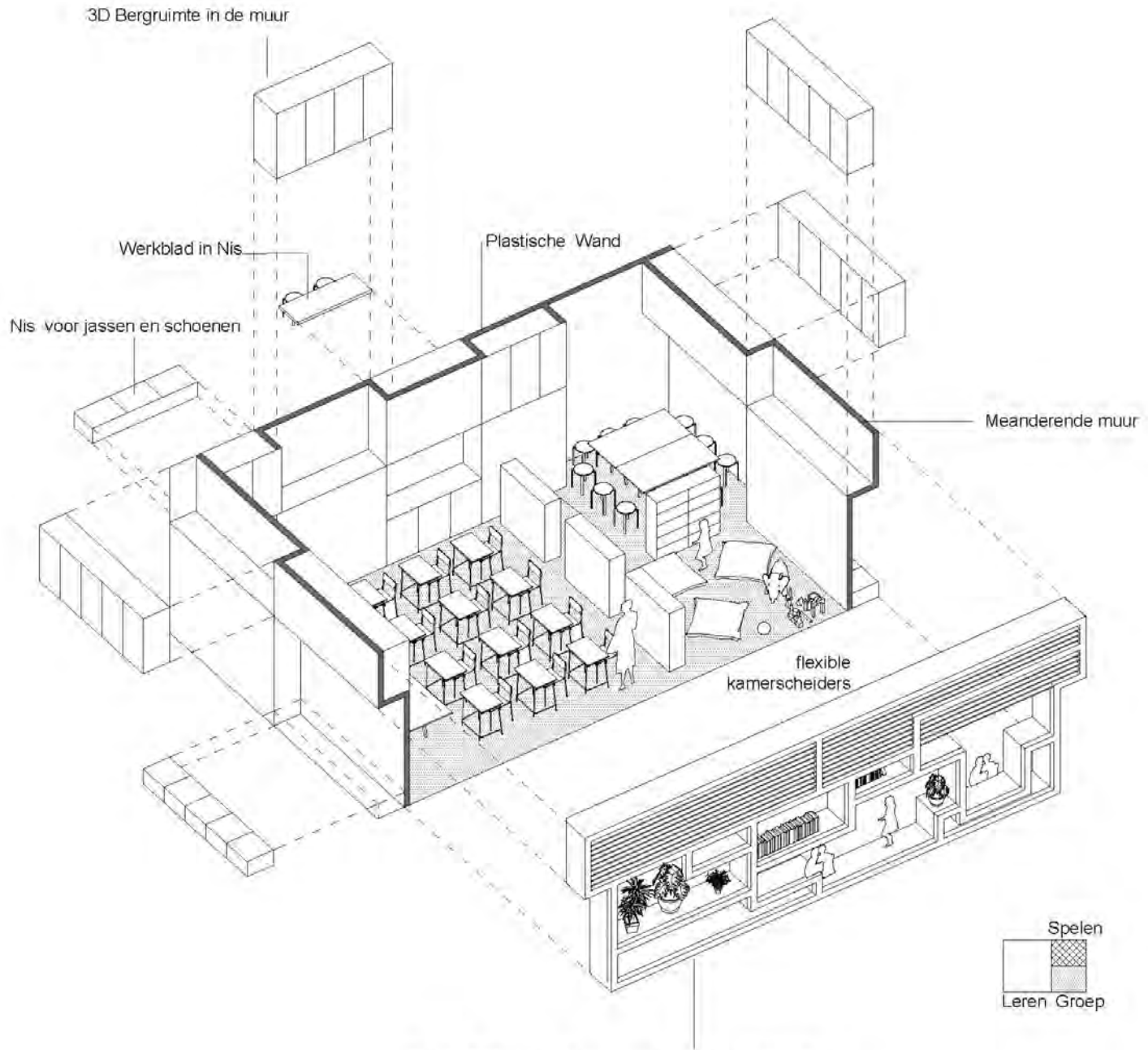
Gescheiden ontsluiting



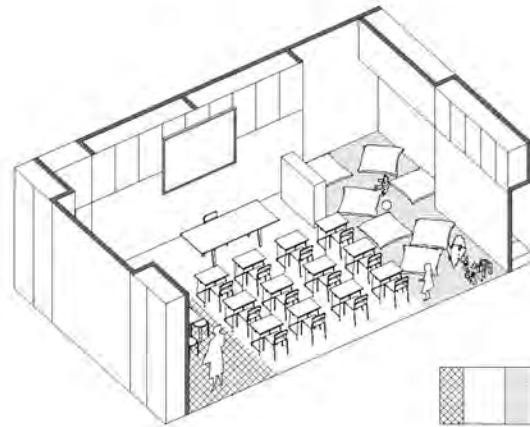
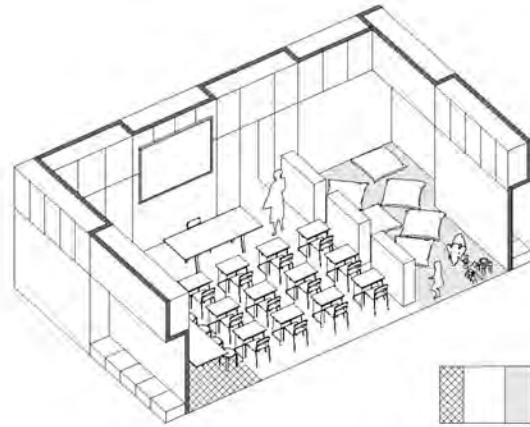
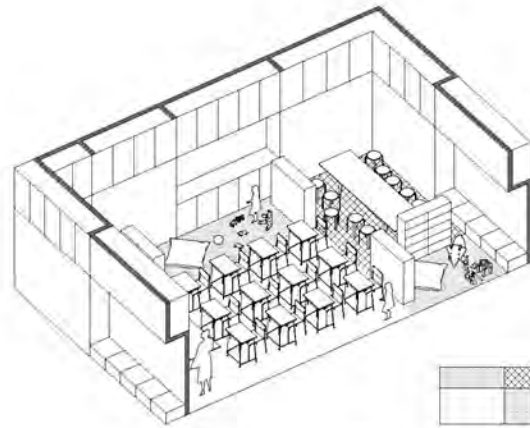




Klaslokaal



Gevel = 3D Kozijn = Boekenkast = Vitrine = Tafel = Bank





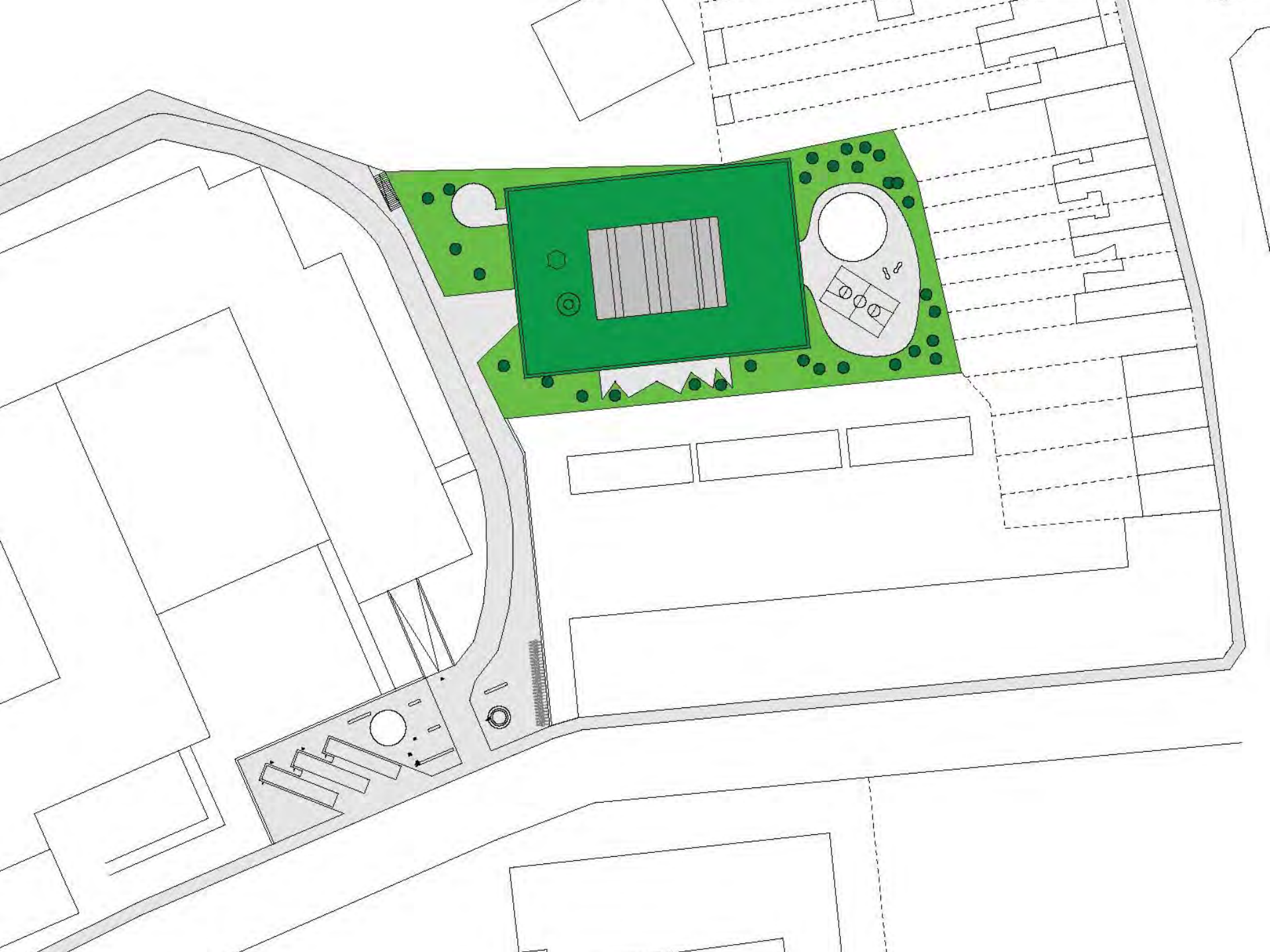


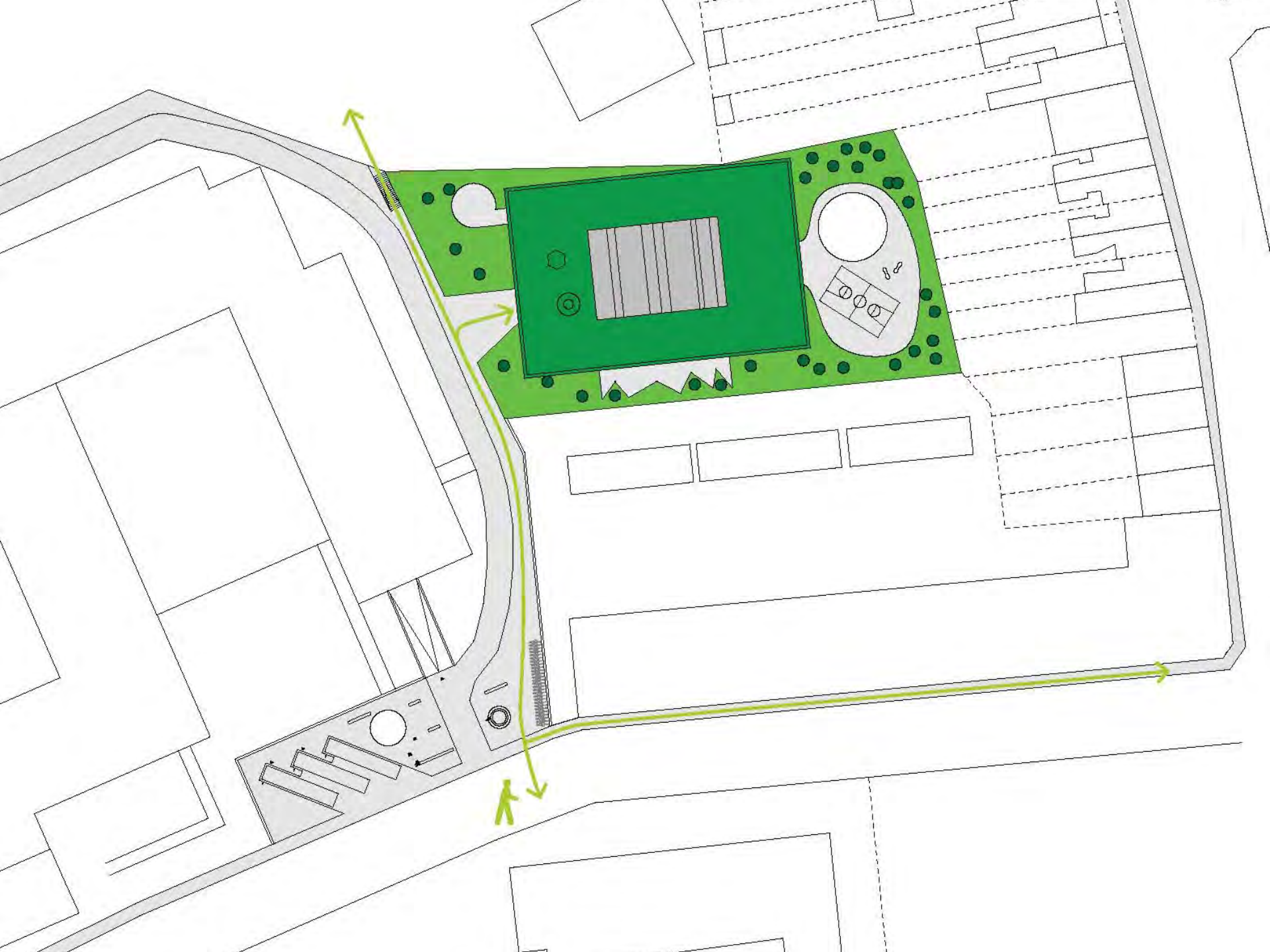


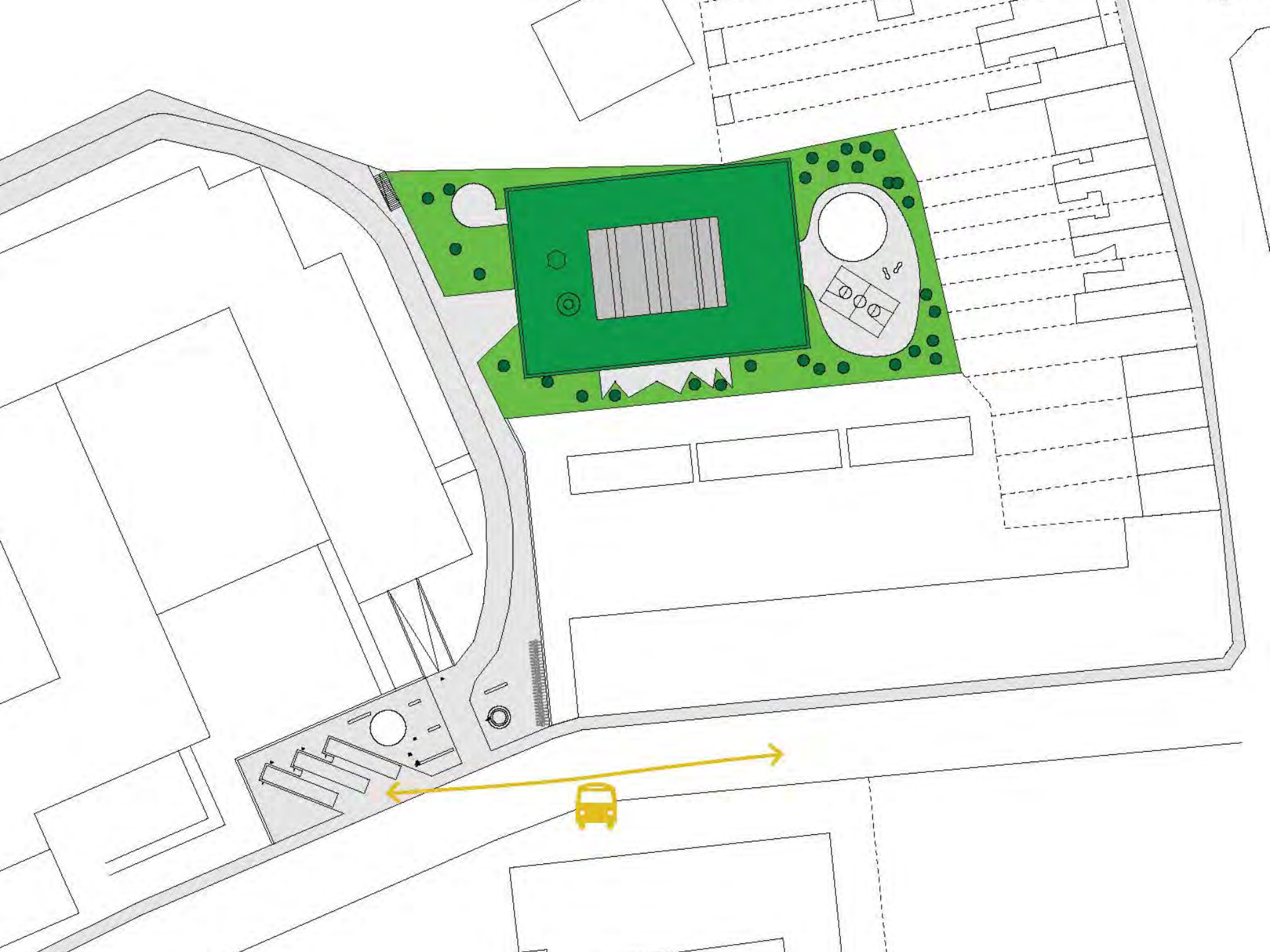


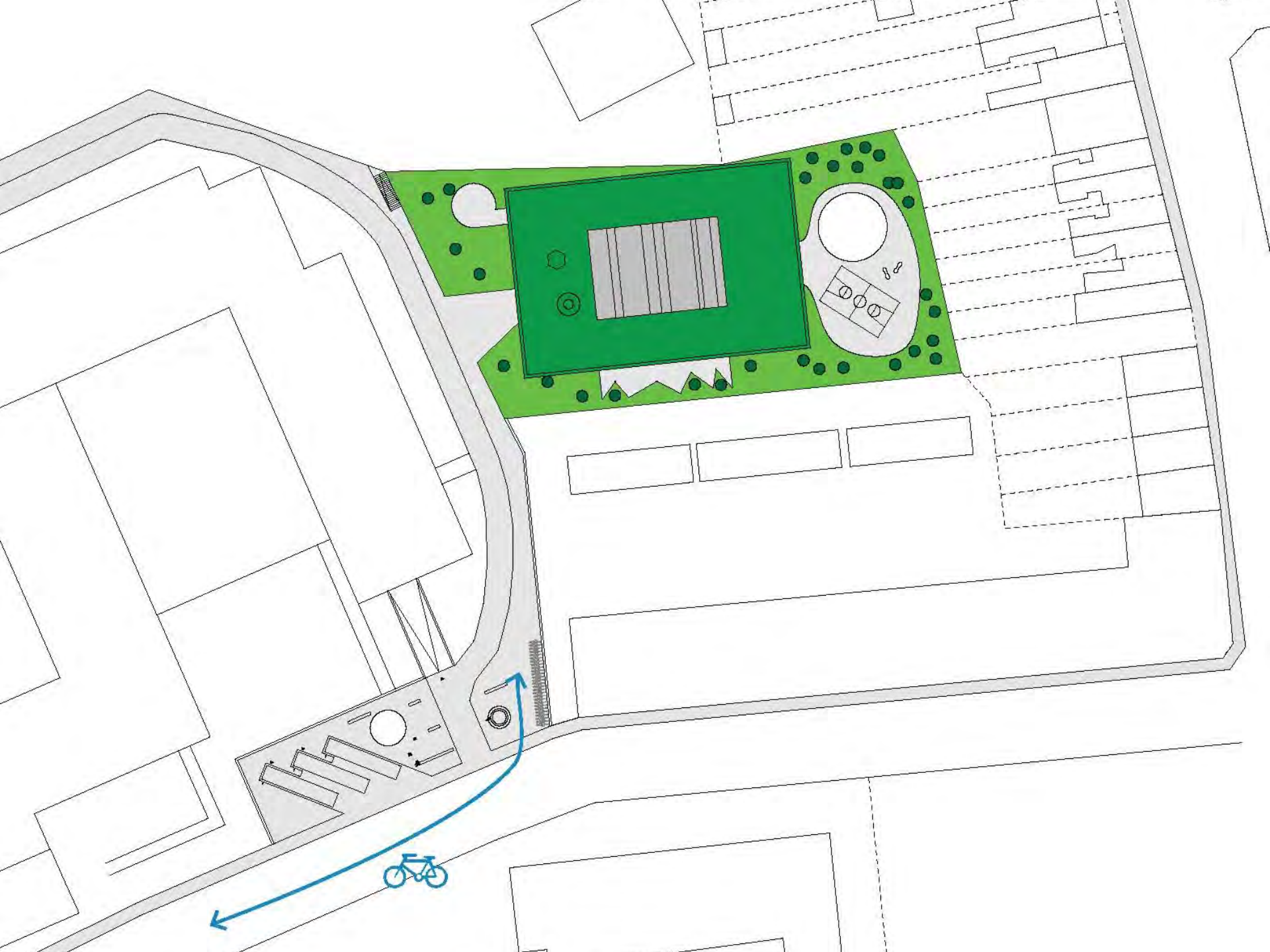
Context

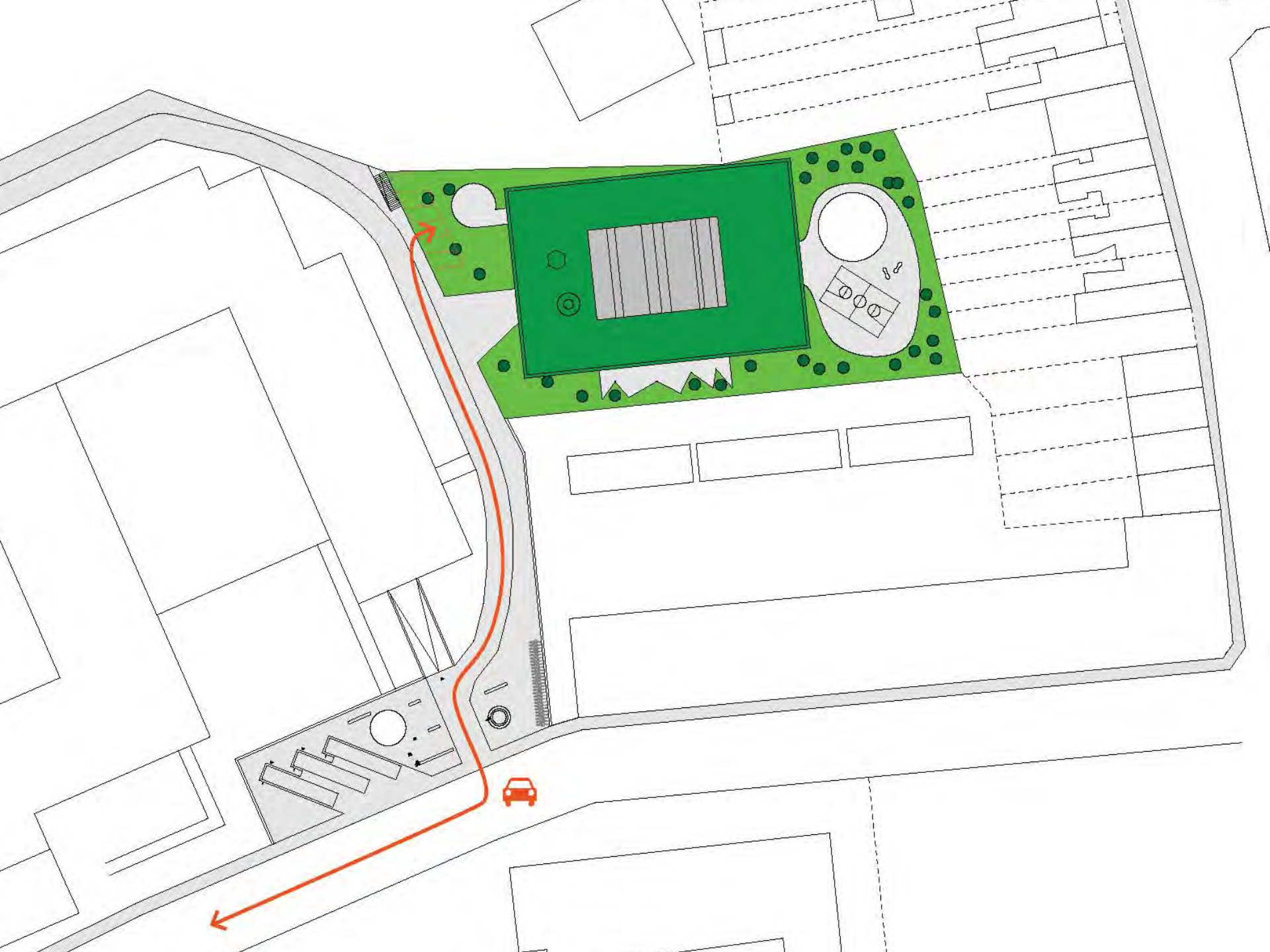












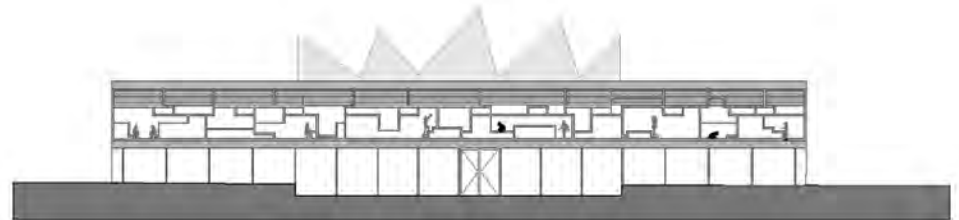
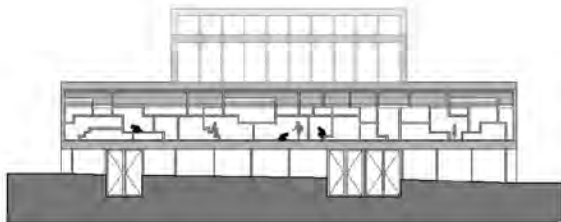
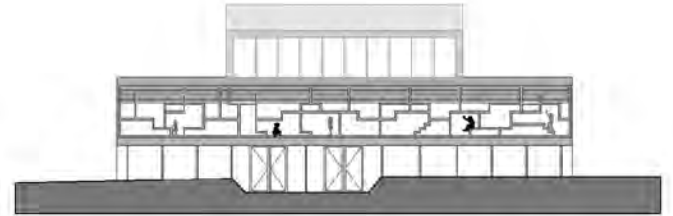
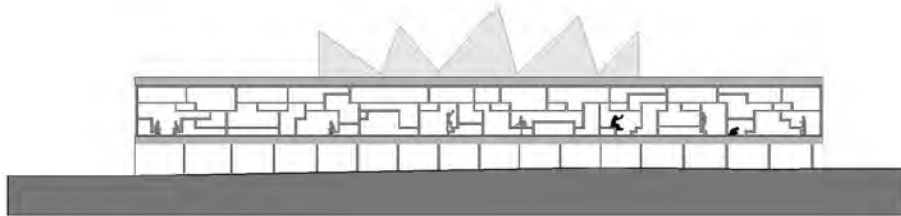




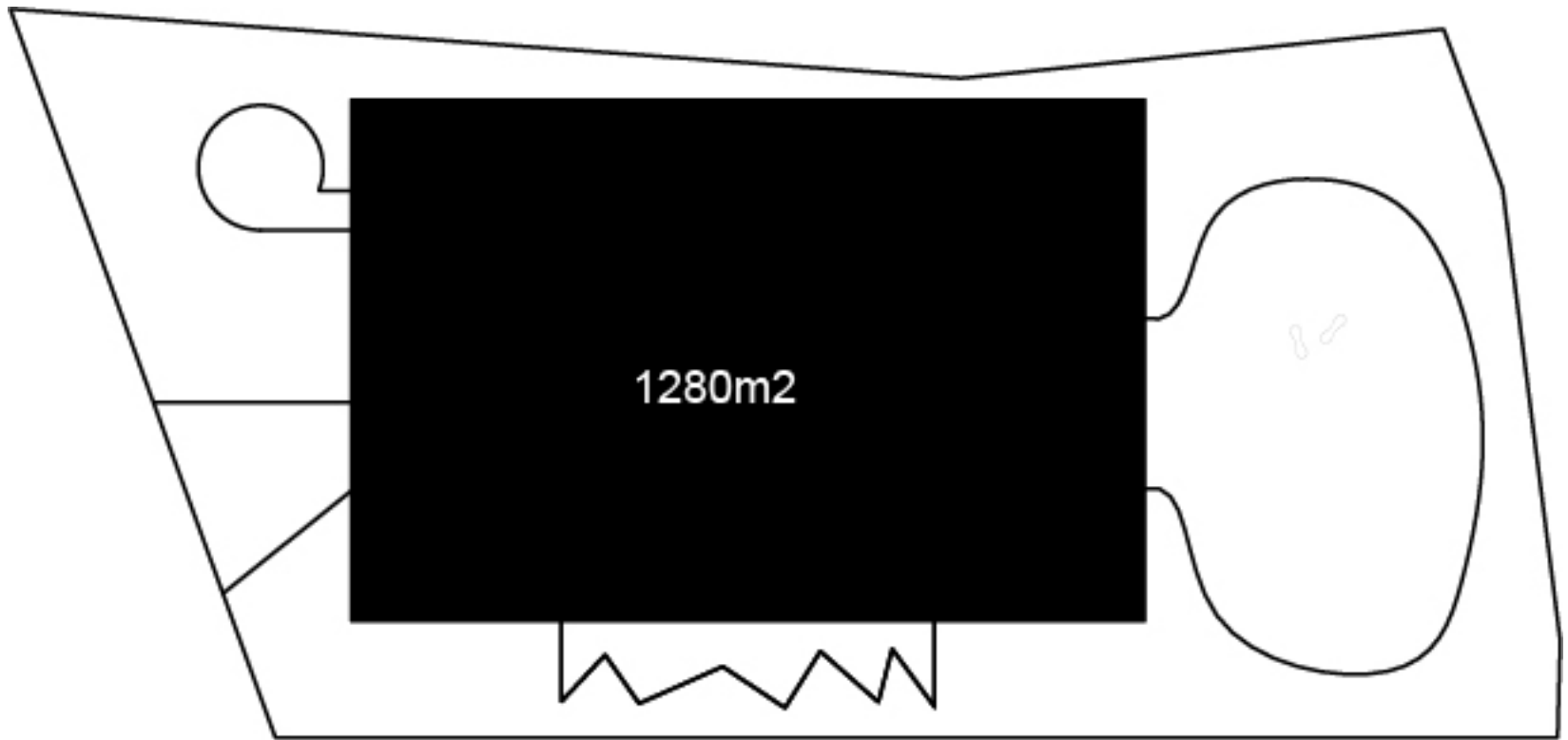




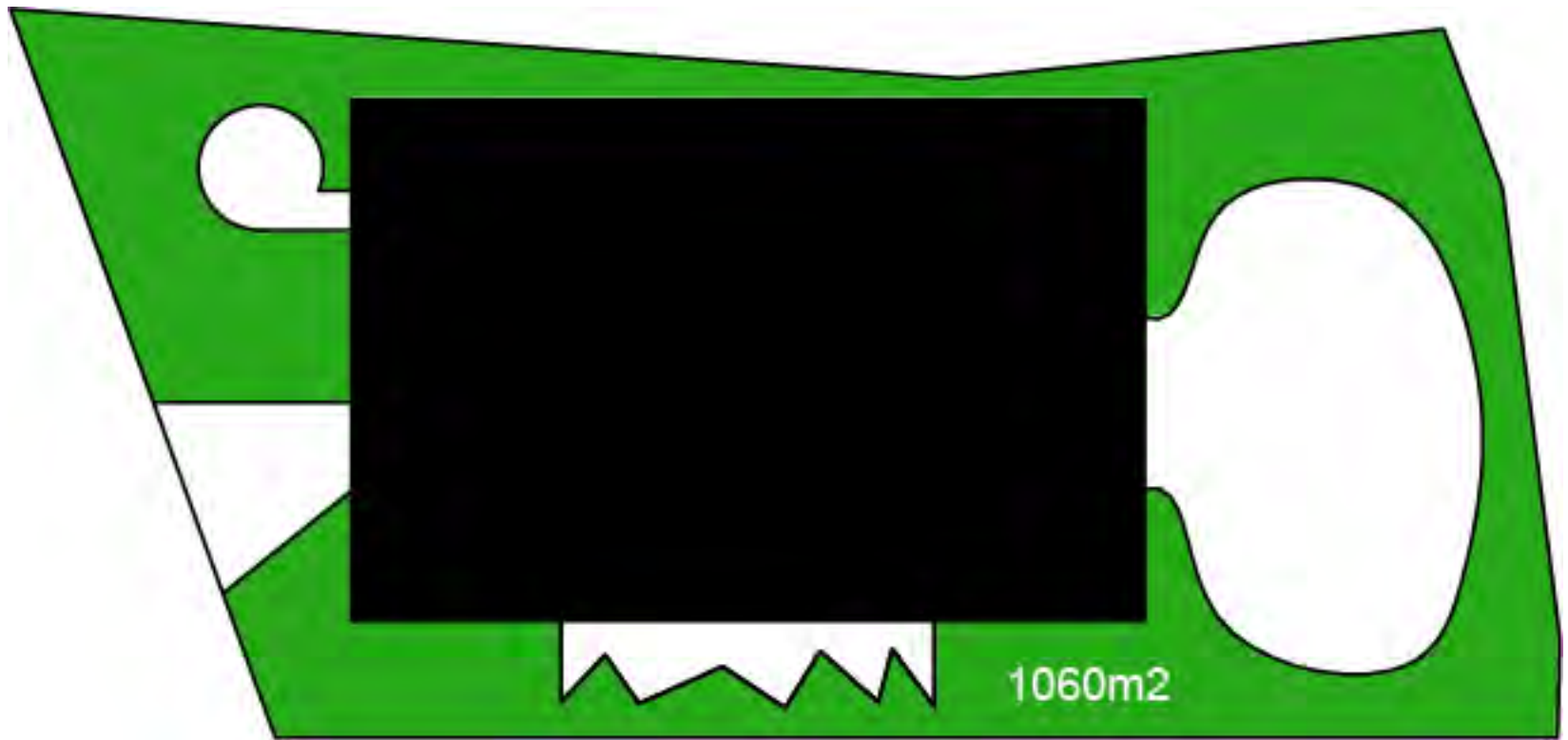
DE STERRENS



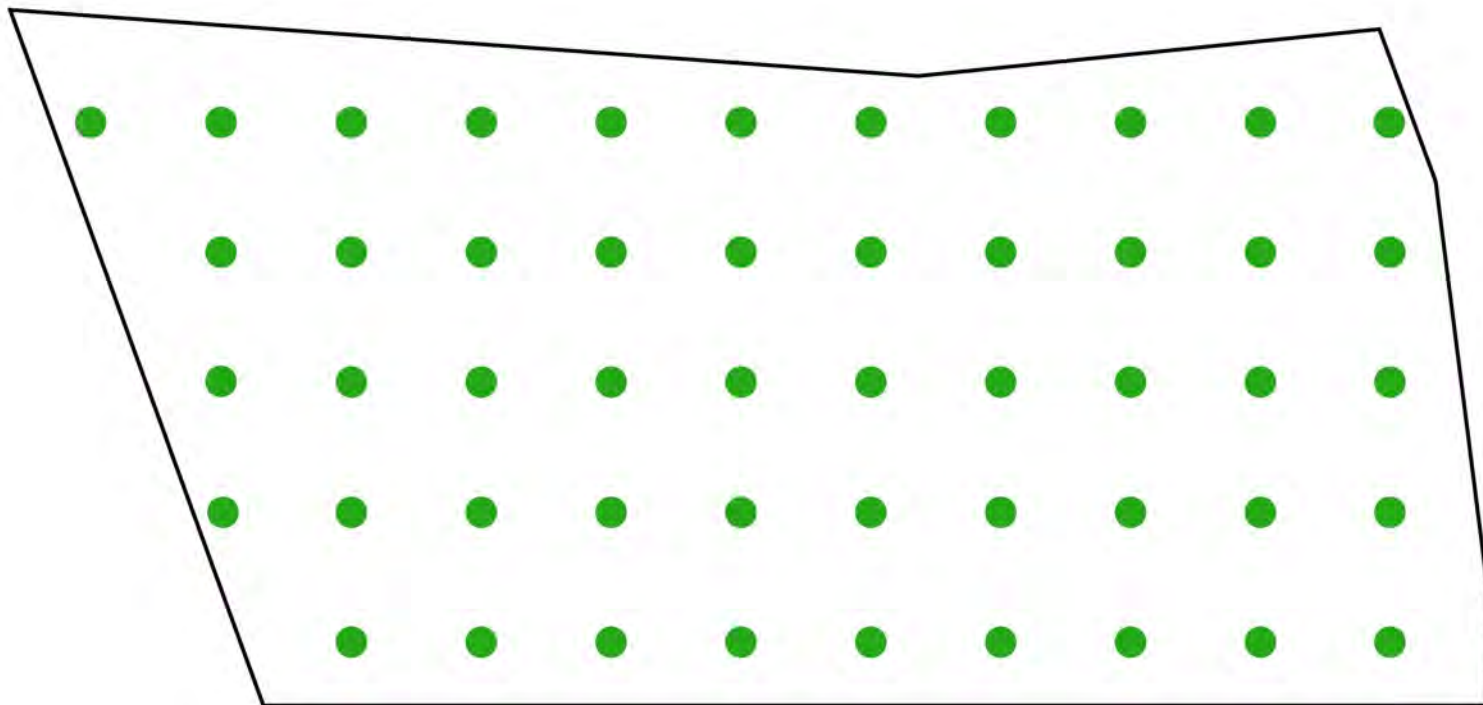
Omgevingsinrichting



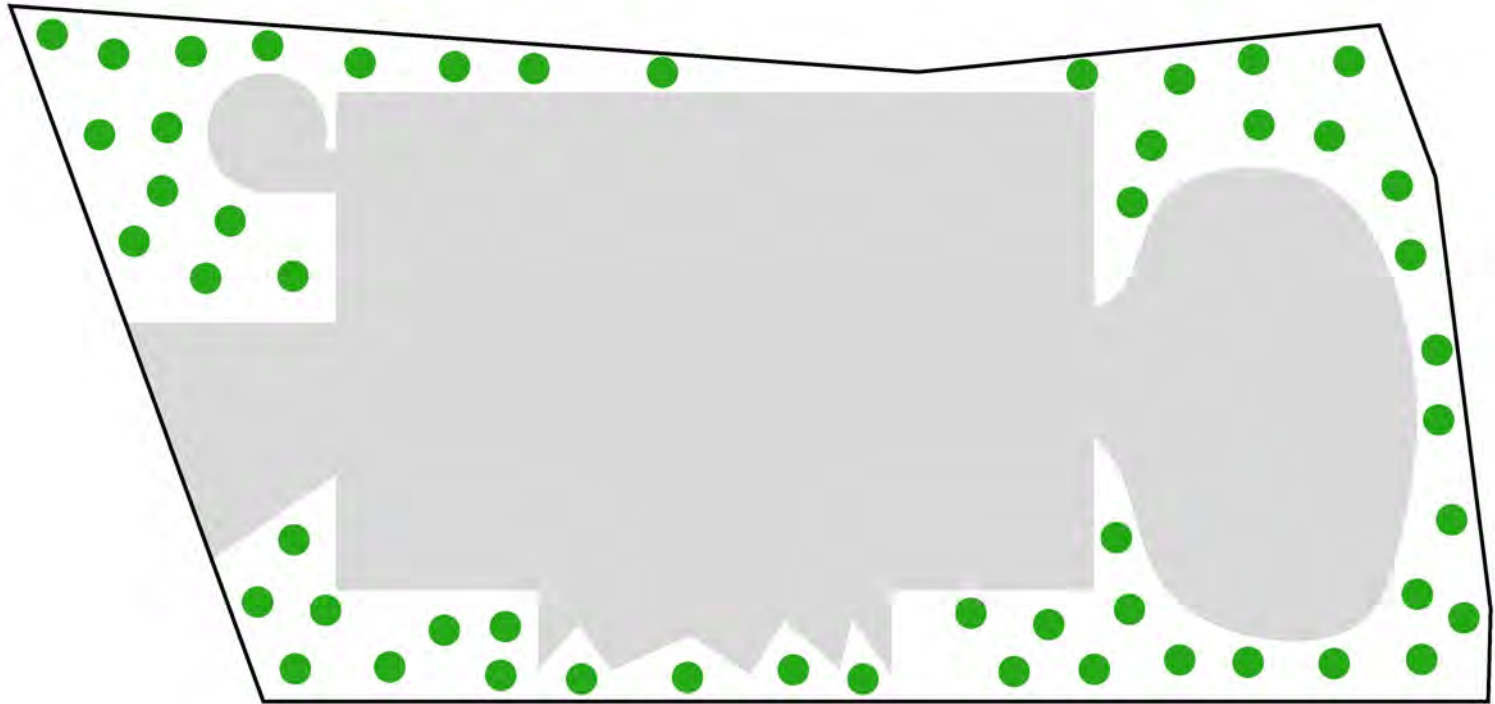
Bebouwde oppervlakte



Boomgaard

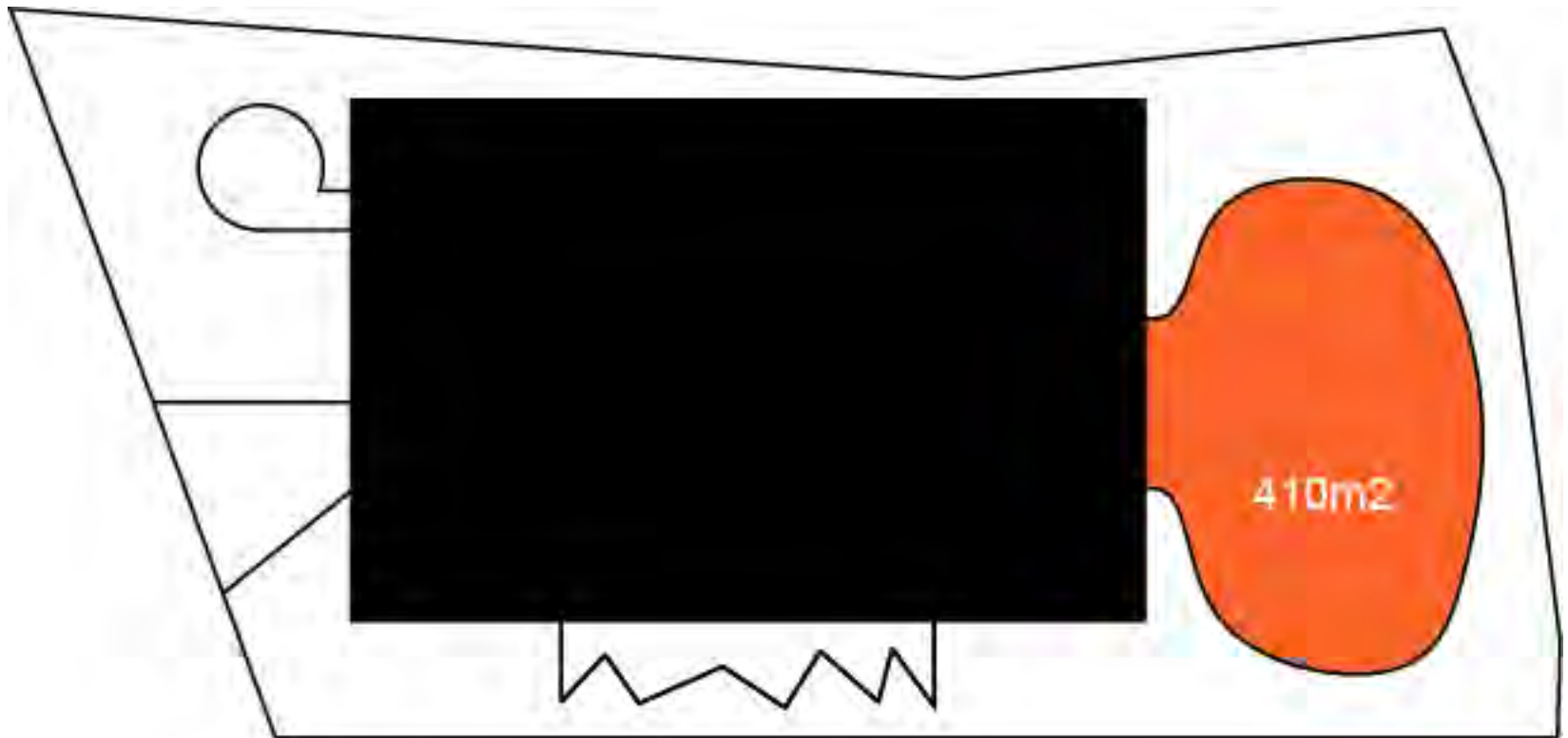


Herplanten appelbomen



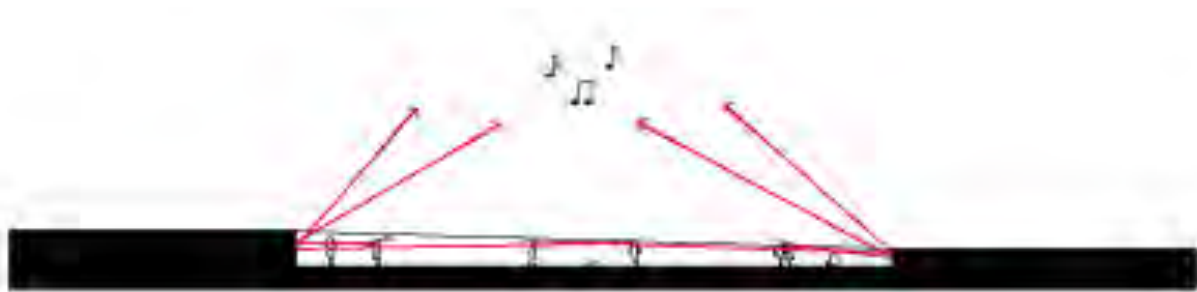
Groene buffer





Verharde speelplaats





geluidsabsorbtie





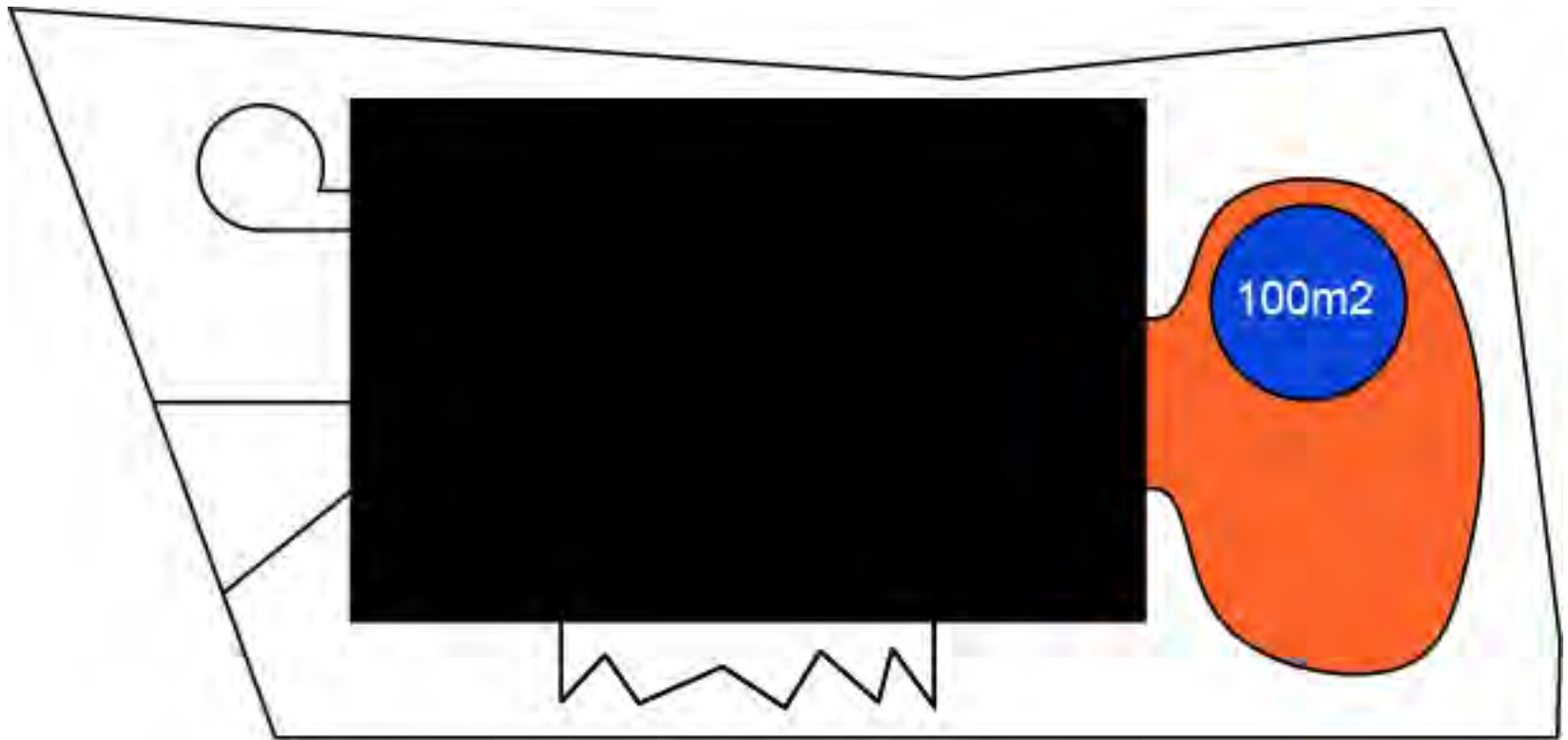


KAPSALON ANKA

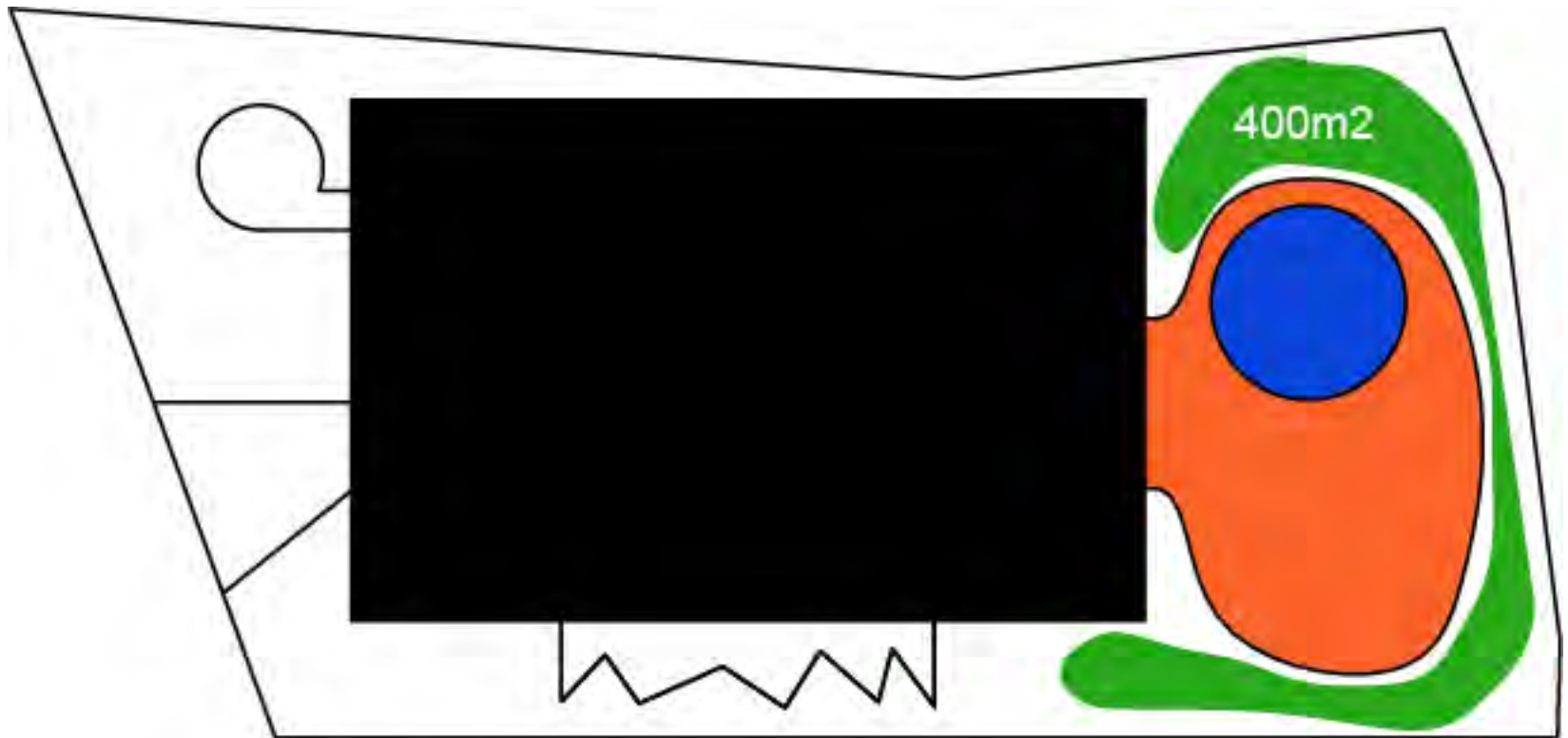
SALON ANKA

TRAYOFF



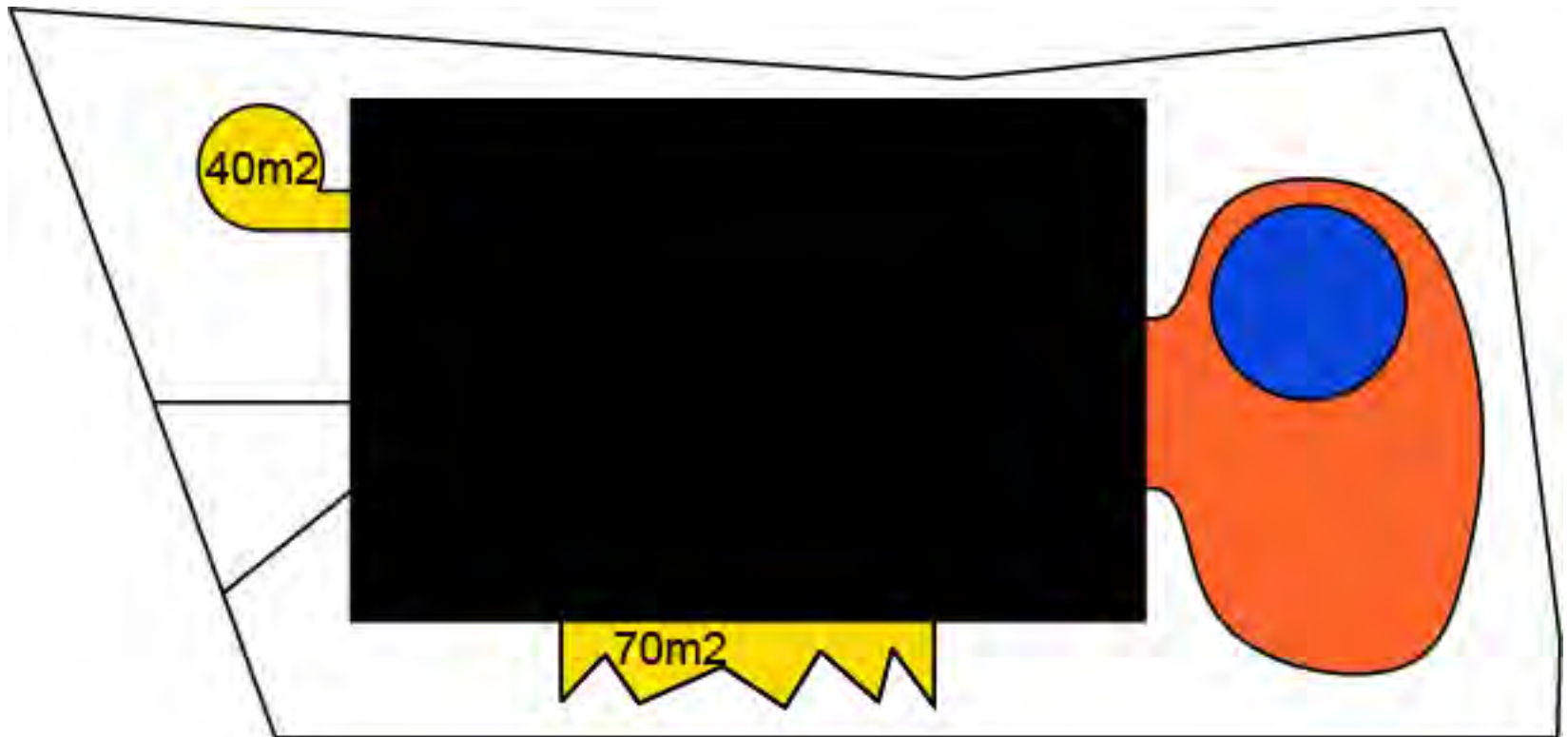


Overdekt spelen

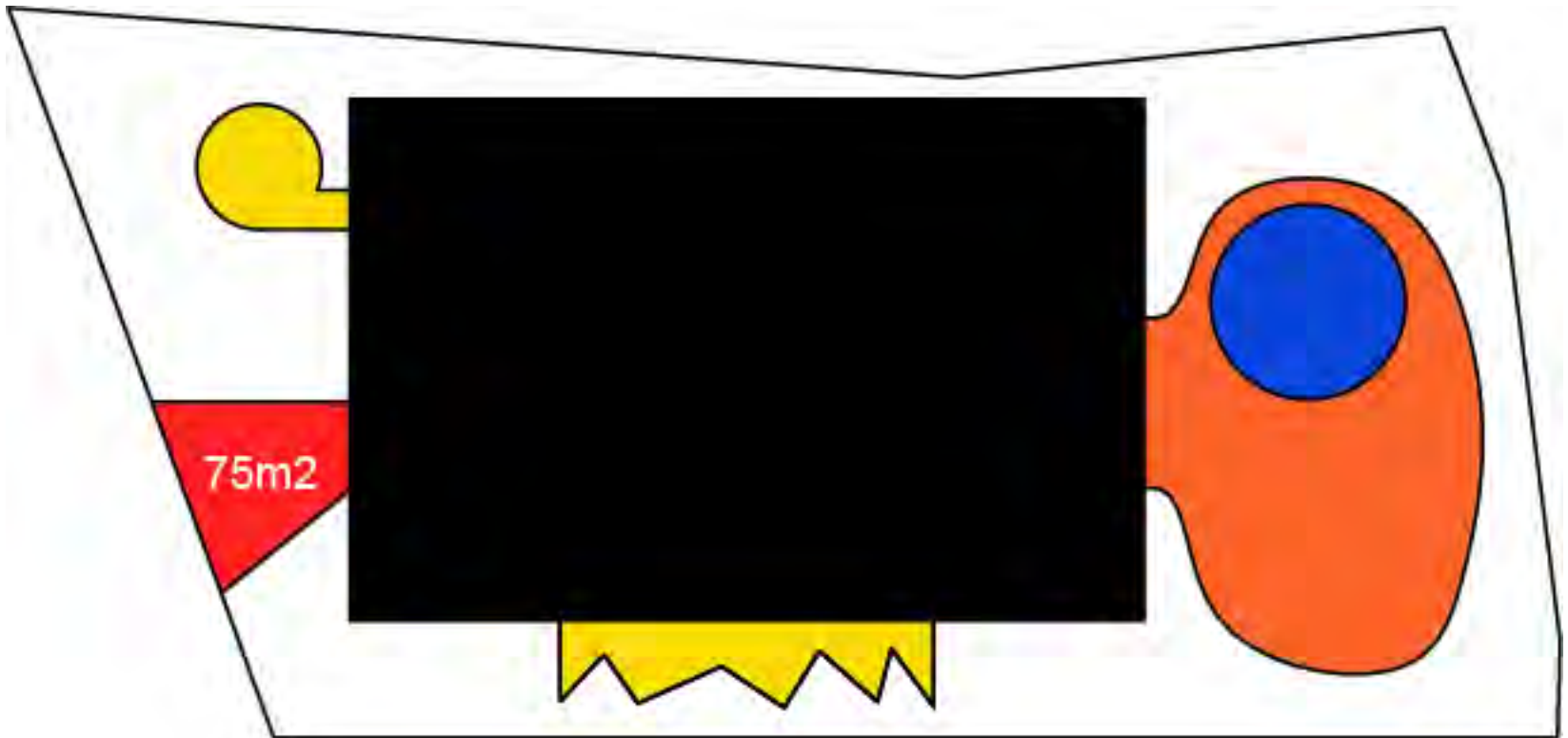


Wild spelen

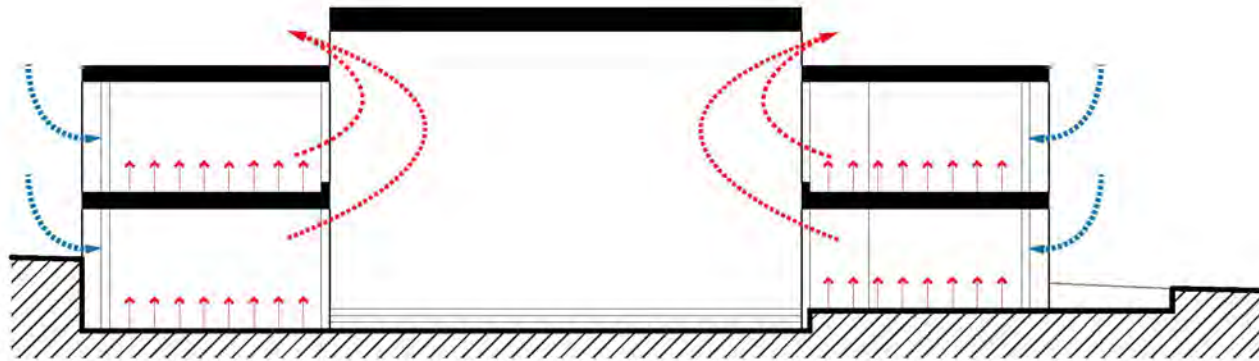




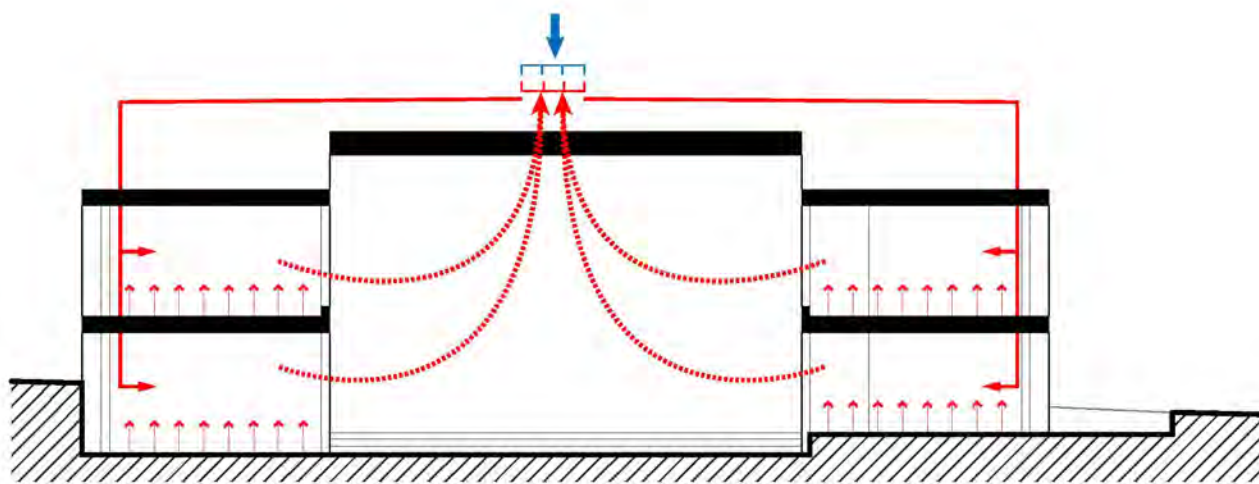
Buitenlokaal en terras



Duurzaamheid

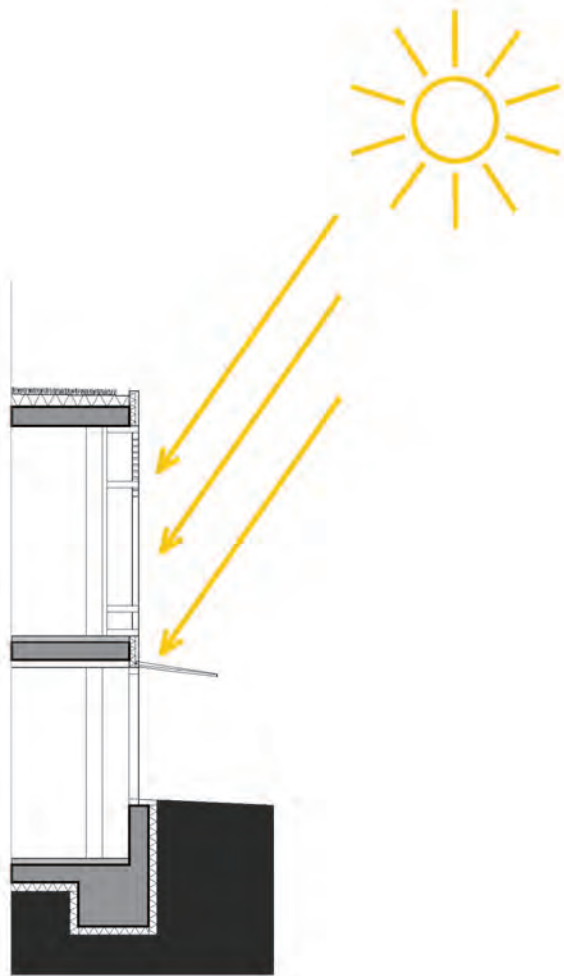


zomer

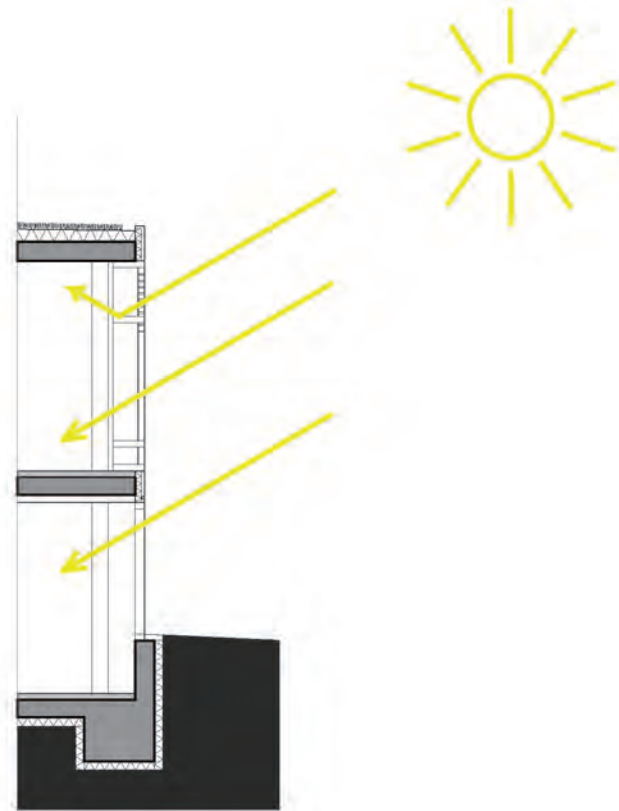


winter

Zonnewering

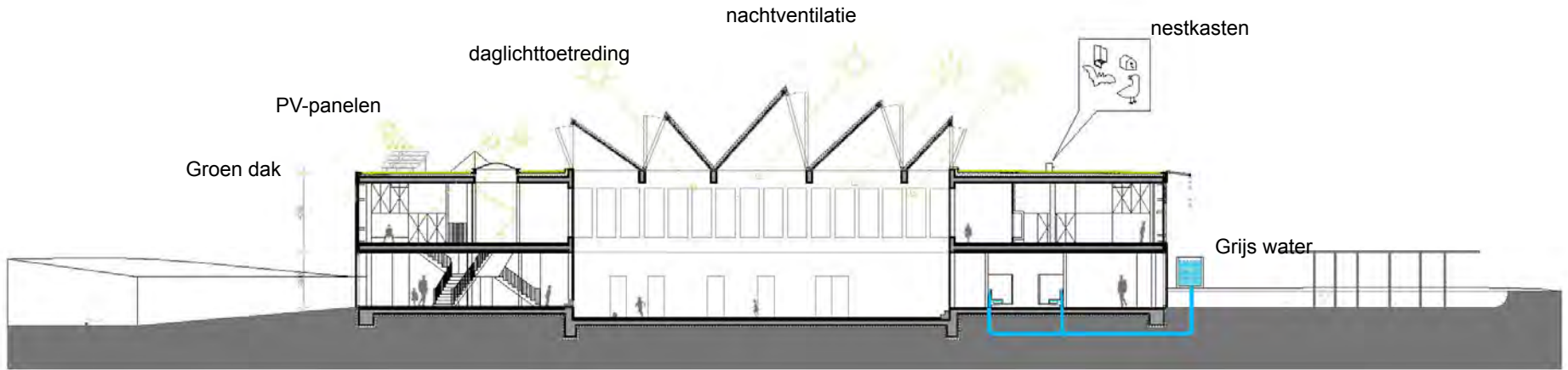


zomersituatie



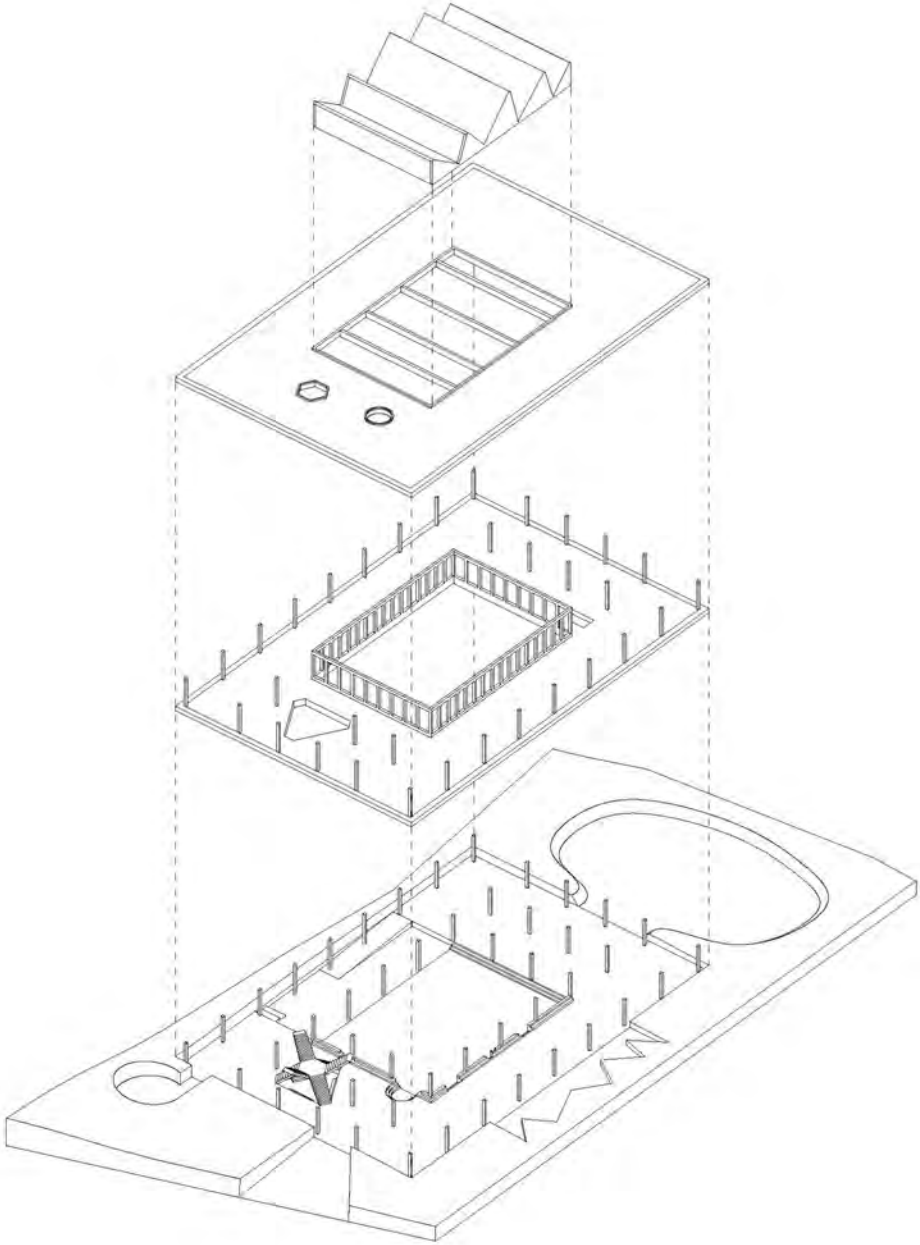
wintersituatie

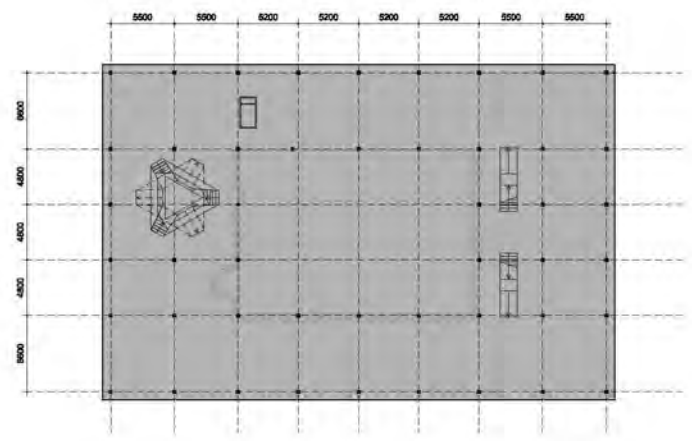
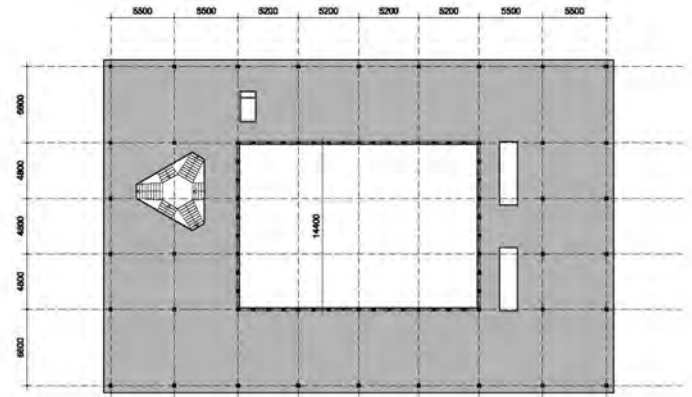
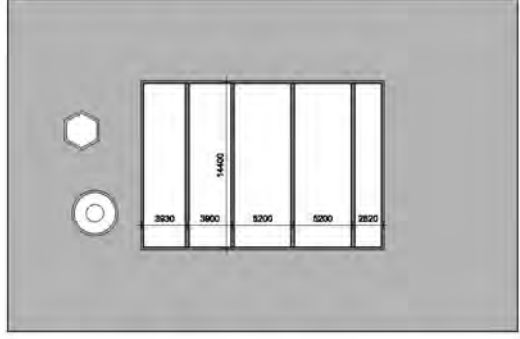






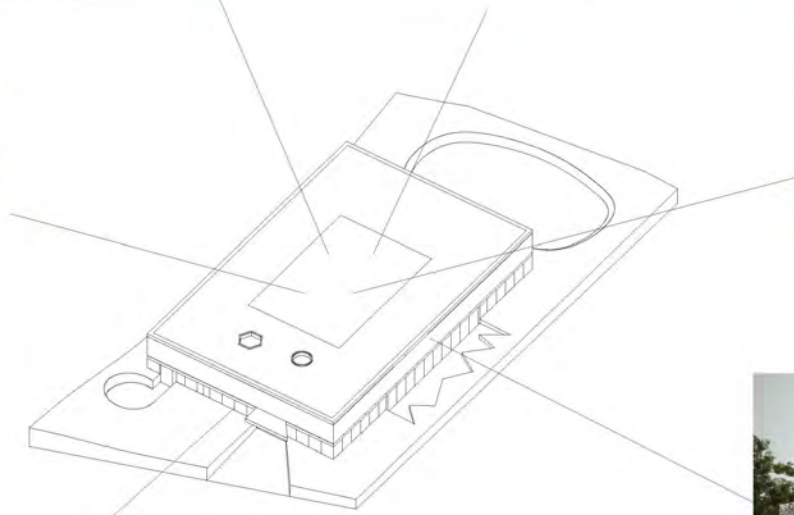
Constructie





Visie is Plan

Alternatieven









project : PSBO De Sterretjes te Tienen
 opdrachtgever : Provincie Vlaams Brabant
 onderwerp : bouwkostenraming
 bestandsnaam :
 versie : 1

werkcode :
 referentie :
 printdatum : 5-3-2013

RECAPITULATIE					BOUWKOSTEN			budget
					bouwkosten	BTW (21%)	totaal	
omschrijving	versie	datum	m ² BVO	eech.pr.				
nieuwbouw	1	5-3-2013	2264,08	€ 1.284,54	€ 2.908.300,72	€ 610.743,15	€ 3.519.043,88	
eerste uitrusting	1	5-3-2013		€ 106,71	€ 241.604,20	€ 50.736,88	€ 292.341,08	
subtotaal nieuwbouw + eerste uitrusting	1	5-3-2013		€ 1.391,25	€ 3.149.904,92	€ 661.480,03	€ 3.811.384,96	€ 3.150.000,00
omgevingswerken	1	5-3-2013	1660,20	€ 353,09	€ 586.196,99	€ 123.101,37	€ 709.298,36	€ 630.000,00
TOTAAL					€ 3.736.101,92	€ 784.581,40	€ 4.520.683,32	€ 3.780.000,00
uitsplitsing nieuwbouw								
aandeel architectuur	1	5-3-2013		€ 642,97	€ 1.455.728,75	€ 305.703,04	€ 1.761.431,79	50,05%
aandeel constructies	1	5-3-2013		€ 329,60	€ 746.240,77	€ 156.710,56	€ 902.951,33	25,66%
aandeel installaties	1	5-3-2013		€ 311,97	€ 706.331,21	€ 148.329,55	€ 854.660,76	24,29%
totaal	1			€ 1.284,54	€ 2.908.300,72	€ 610.743,15	€ 3.519.043,88	